

WAAS CH 45811 W34B	APP CRS 339°	Rwy Ldg 8500 TDZE 346 Apt Elev 346
--	------------------------	---

RNAV (GPS) RWY 34R

JACKSON-MEDGAR WILEY EVERS INTL (JAN)

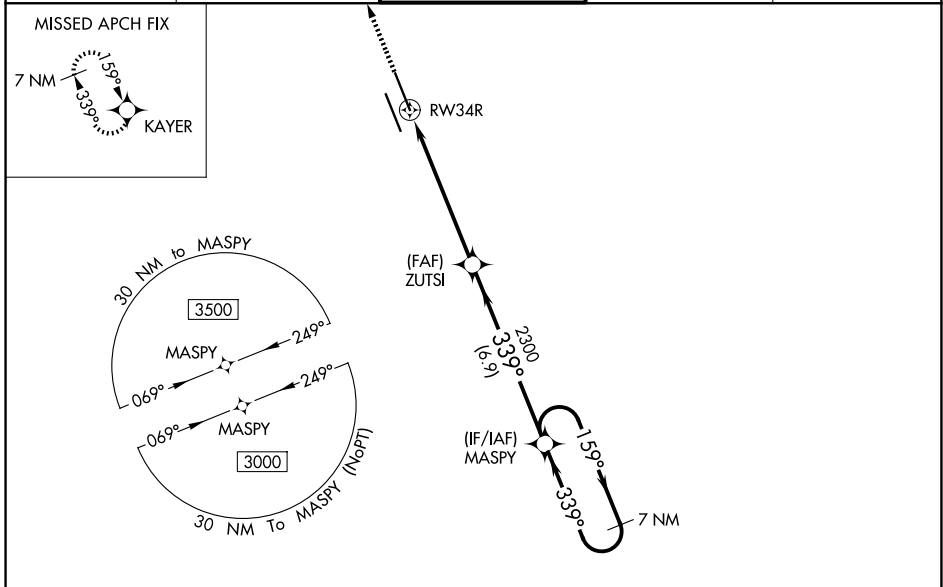
RNP APCH.

▼ For uncompensated Baro-VNAV systems, LNAV/VNAV NA below -7°C or above 54°C. Circling NA for Cat E southwest of Rwy 16R-34L. When local altimeter setting not received, use Hawkins Fld altimeter setting and increase all DA 19 feet and all MDA 20 feet, increase LPV all Cats visibility to RVR 5100, LNAV/VNAV all Cats visibility to 1¼ SM and LNAV Cats C/D/E visibility to 1½ SM. VDP and Baro-VNAV NA when using Hawkins Fld altimeter setting. Helicopter visibility reduction below ¾ SM NA.

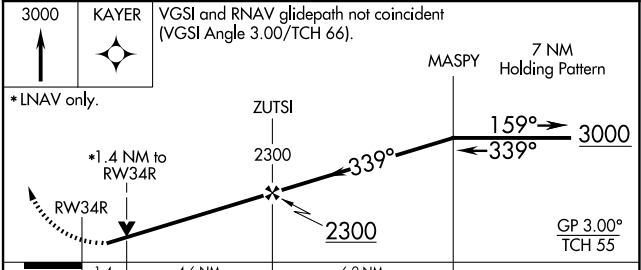
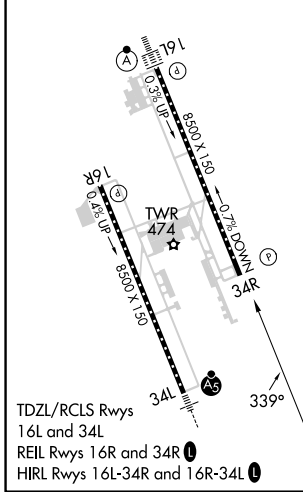
▲ ASR

MISSED APPROACH: Climb to 3000 direct KAYER and hold.

ATIS 121.05	JACKSON APP CON * 123.9 317.7	JACKSON TOWER * 120.9 (CTAF) 352.0	GND CON 121.7 348.6	UNICOM 122.95
-----------------------	---	--	-------------------------------	-------------------------



ELEV 346	TDZE 346
-----------------	-----------------



CATEGORY	A	B	C	D	E
LPV DA	646/47 300 (300-1)				
LNAV/VNAV DA	846-1½ 500 (500-1½)				
LNAV MDA	860/55	514 (600-1)	860-1¾		514 (600-1¾)
CIRCLING	880-1 534 (600-1)	900-1 554 (600-1)	900-1½ 554 (600-1½)	960-2 614 (700-2)	1040-2½ 694 (700-2½)

SC-4, 14 MAY 2026 to 11 JUN 2026

SC-4, 14 MAY 2026 to 11 JUN 2026