

MHZ VORTAC 113.2 Chan 79	APP CRS 171°	Rwy Ldg 8500 TDZE 312 Apt Elev 346
--	------------------------	---

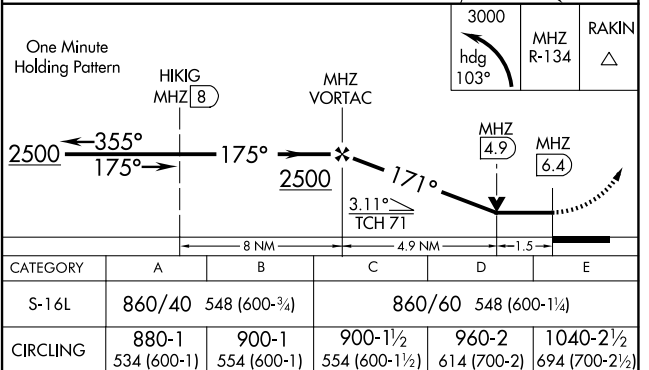
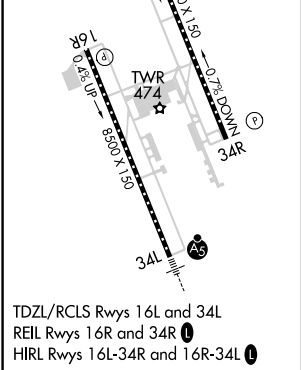
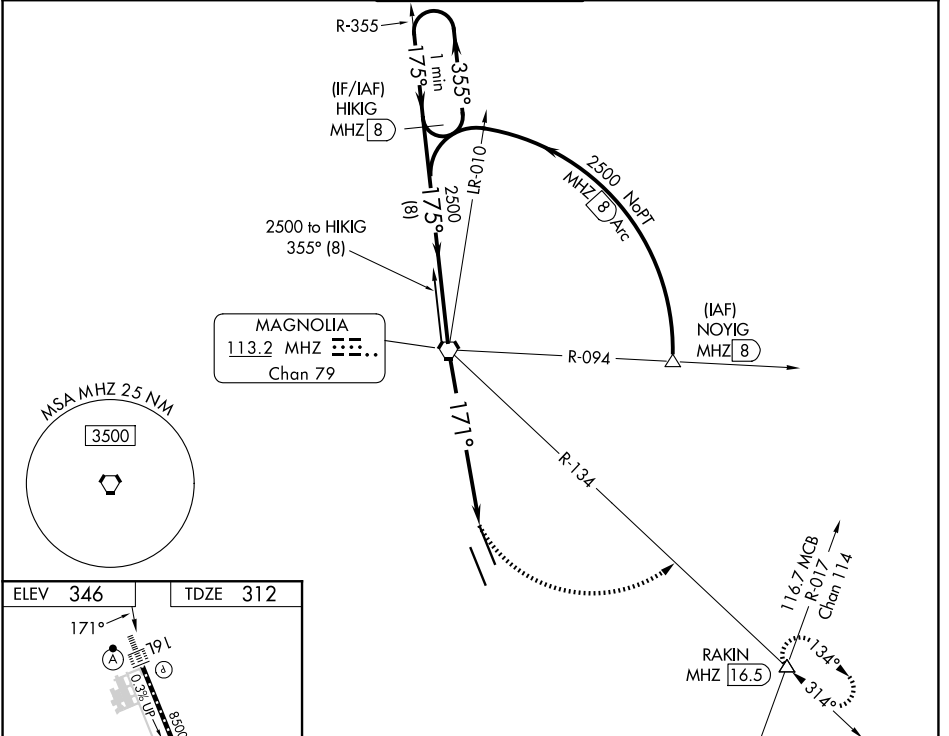
VOR/DME or TACAN RWY 16L

JACKSON-MEDGAR WILEY EVERS INTL (JAN)

▽ VDP NA with Hawkins fld altimeter setting. When local altimeter setting not received, use Hawkins fld altimeter setting and increase all MDA 20 feet; increase S-16L Cats C/D/E visibility to 1¼ mile. For inop ALSF, increase S-16L Cats A/B visibility to 1 mile; Cat E to 1½. For inop ALSF when using Hawkins fld altimeter setting, increase S-16L Cats A/B visibility to 1 mile, and Cats C/D/E visibility to 1½. Circling NA for Cat E southwest of Rwy 16R-34L. Helicopter visibility reduction below ¾ SM NA.

ALSF-2
Ⓐ MISSED APPROACH: Climbing left turn to 3000 on heading 103° and MHZ VORTAC R-134 to RAKIN INT/ MHZ 16.5 DME and hold.

ATIS 121.05	JACKSON APP CON ★ 123.9 317.7	JACKSON TOWER ★ 120.9 (CTAF) 352.0	GND CON 121.7 348.6	UNICOM 122.95
-----------------------	---	--	-------------------------------	-------------------------



SC-4, 14 MAY 2026 to 11 JUN 2026

SC-4, 14 MAY 2026 to 11 JUN 2026