

MHZ VORTAC <b>113.2</b> Chan <b>79</b>	APP CRS <b>175°</b>	Rwy Ldg <b>8500</b> TDZE <b>320</b> Apt Elev <b>346</b>
--	------------------------	---

# VOR/DME or TACAN RWY 16R

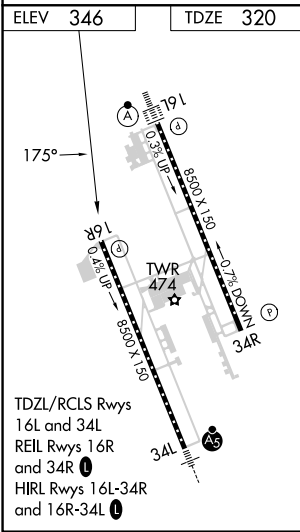
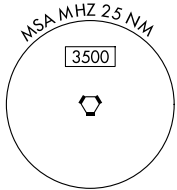
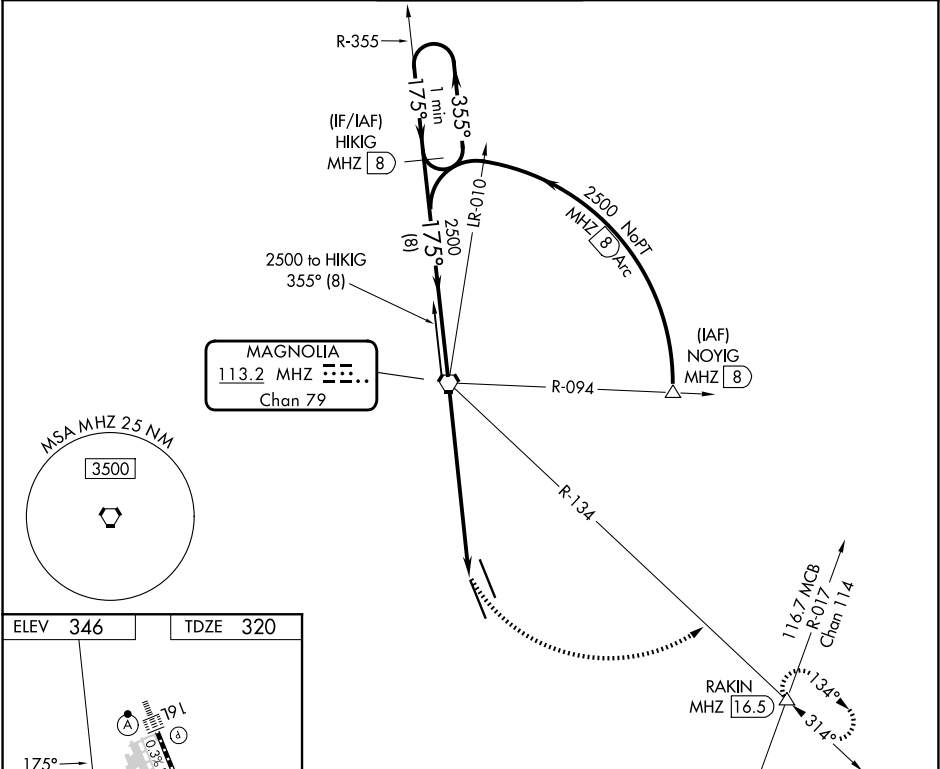
JACKSON-MEDGAR WILEY EVERS INTL (JAN)

**⚠** VDP NA with Hawkins fld altimeter setting. When local altimeter setting not received, use Hawkins fld altimeter setting and increase all MDA 20 feet; increase S-16R Cats C/D/E visibility 1/8 mile. Circling NA for Cat E SW of Rwy 16R-34L. Helicopter visibility reduction below 3/4 SM NA.

**ASR**

**MISSED APPROACH:** Climbing left turn to 3000 on heading 103° and MHZ VORTAC R-134 to RAKIN INT/ MHZ 16.5 DME and hold.

ATIS <b>121.05</b>	JACKSON APP CON ★ <b>123.9 317.7</b>	JACKSON TOWER ★ <b>120.9 (CTAF) 352.0</b>	GND CON <b>121.7 348.6</b>	UNICOM <b>122.95</b>
-----------------------	---	--	-------------------------------	-------------------------



VGSI and descent angles not coincident (VGSI Angle 3.00/TCH 80).

One Minute Holding Pattern	3000	RAKIN			
HIKIG MHZ 8	hdg 103°	MHZ R-134			
MHZ VORTAC	MHZ 5.6	MHZ 7.1			
2500	2500				
355°	175°	175°			
8 NM	5.5 NM	1.6			
2.83° TCH 55					
CATEGORY	A	B	C	D	E
S-16R	880-1	560 (600-1)	880-1 1/2	560 (600-1 1/2)	
CIRCLING	880-1	900-1	900-1 1/2	960-2	1040-2 1/2
	534 (600-1)	554 (600-1)	554 (600-1 1/2)	614 (700-2)	694 (700-2 1/2)

SC-4, 14 MAY 2026 to 11 JUN 2026

SC-4, 14 MAY 2026 to 11 JUN 2026