

WAAS CH 56415 W30A	APP CRS 298°	Rwy ldg 5320 TDZE 919 Apt Elev 919
---------------------------------	------------------------	---

RNAV (GPS) RWY 30

ANDERSON RGNL (AID)

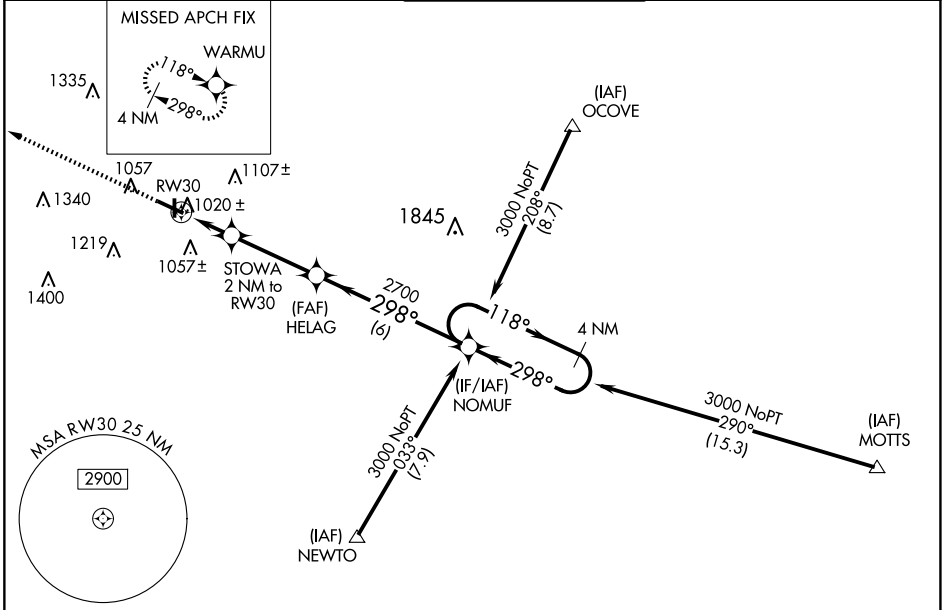
RNP APCH

For uncompensated Baro-VNAV systems, LNAV/VNAV NA below -16°C (4°F) or above 47°C (116°F). When local altimeter setting not received, use Muncie altimeter setting and increase all DA 32 feet and all MDA 40 feet, and increase LPV and LNAV/VNAV all Cats and LNAV Cat C visibility ¼ mile. Inoperative table does not apply.
Rwy 30 helicopter visibility reduction below ¾ SM NA.



MISSED APPROACH:
Climb to 3000 direct
WARMU and hold.

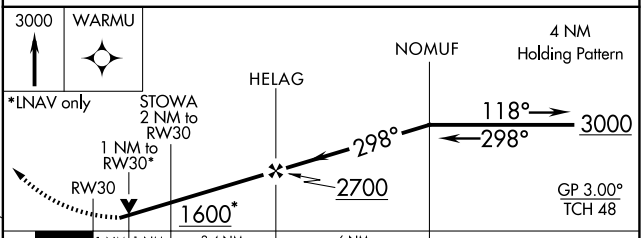
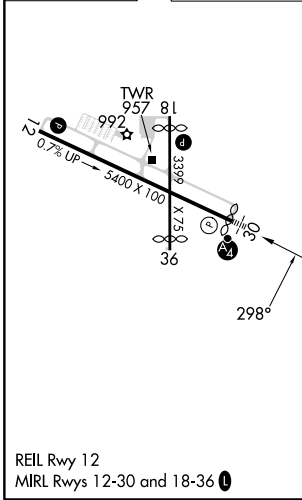
AWOS-3 128.55	INDIANAPOLIS APP CON 120.65 317.8	ANDERSON TOWER * 126.0 (CTAF) 0	GND CON 121.6	UNICOM 122.95
-------------------------	---	--	-------------------------	-------------------------



EC-2, 14 MAY 2026 to 11 JUN 2026

EC-2, 14 MAY 2026 to 11 JUN 2026

ELEV 919	TDZE 919
-----------------	-----------------



CATEGORY	A	B	C	D
LPV DA	1234-1		315 (400-1)	
LNAV/VNAV DA	1367-1½		448 (500-1½)	
LNAV MDA	1300-1		381 (400-1)	
CIRCLING	1360-1	1400-1	1520-1¾	1520-2
	441 (500-1)	481 (500-1)	601 (700-1¾)	601 (700-2)