


WAAS CH 93711 W36A	APP CRS 002°	Rwy Ldg 6161 TDZE 1351 Apt Elev 1365
--	------------------------	---

RNAV (GPS) RWY 36


BOONE COUNTY (HRO)

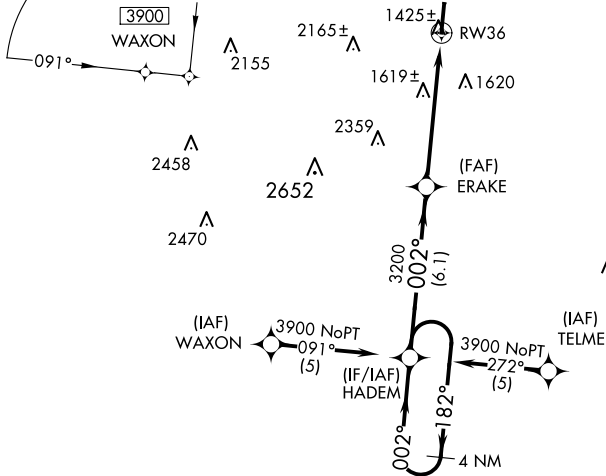
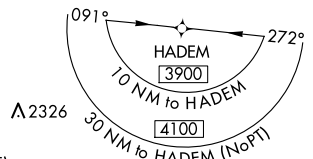
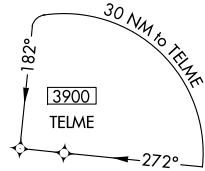
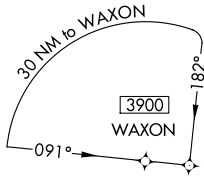
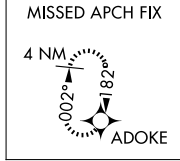
▼ For uncompensated Baro-VNAV systems, LNAV/VNAV NA below -17°C (2°F) or above 46°C (114°F). DME/DME RNP-0.3 NA. VDP and Baro-VNAV NA when using Mountain Home altimeter setting. When local altimeter setting not received, use Mountain Home altimeter setting and increase all DA 139 feet and all MDA 140 feet, increase LPV all Cats and LNAV and Circling Cat C and D visibility ¼ mile, increase LNAV/VNAV all Cats visibility ½ mile. For inoperative MALSRS when using Mountain Home altimeter setting, increase LPV all Cats visibility to 1¼.

MALSRS  **MISSED APPROACH:** Climb to 3200 direct ADOKE and hold.

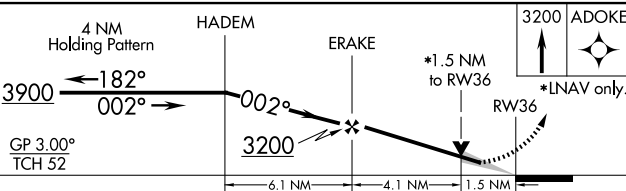
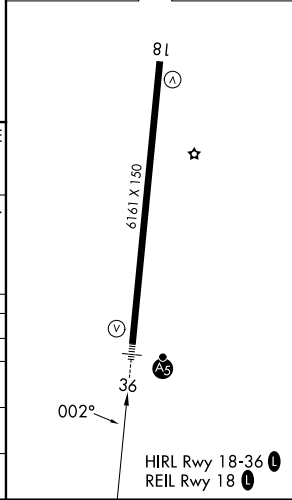
ASOS
121.125

MEMPHIS CENTER
126.85 281.55

UNICOM
123.0 (CTAF) 



ELEV	1365	TDZE	1351
------	------	------	------



CATEGORY	A	B	C	D
LPV DA	1601-1/2 250 (300-1/2)			
LNAV/VNAV DA	1815-1 464 (500-1)			
LNAV MDA	1880-1/2 529 (600-1/2)		1880-1 529 (600-1)	
			1880-1 1/4 529 (600-1 1/4)	
C CIRCLING	1880-1 515 (600-1)		2340-3 2560-3 975 (1000-3) 1195 (1200-3)	

SC-1, 14 MAY 2026 to 11 JUN 2026

SC-1, 14 MAY 2026 to 11 JUN 2026