

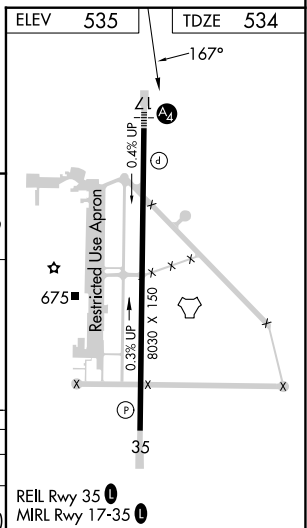
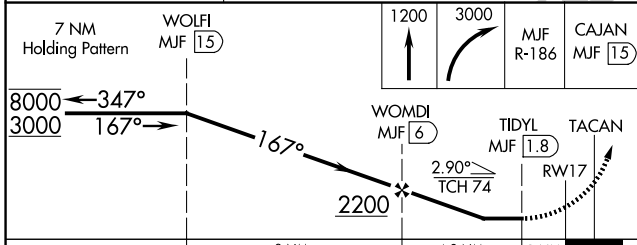
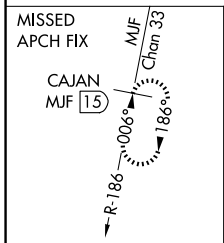
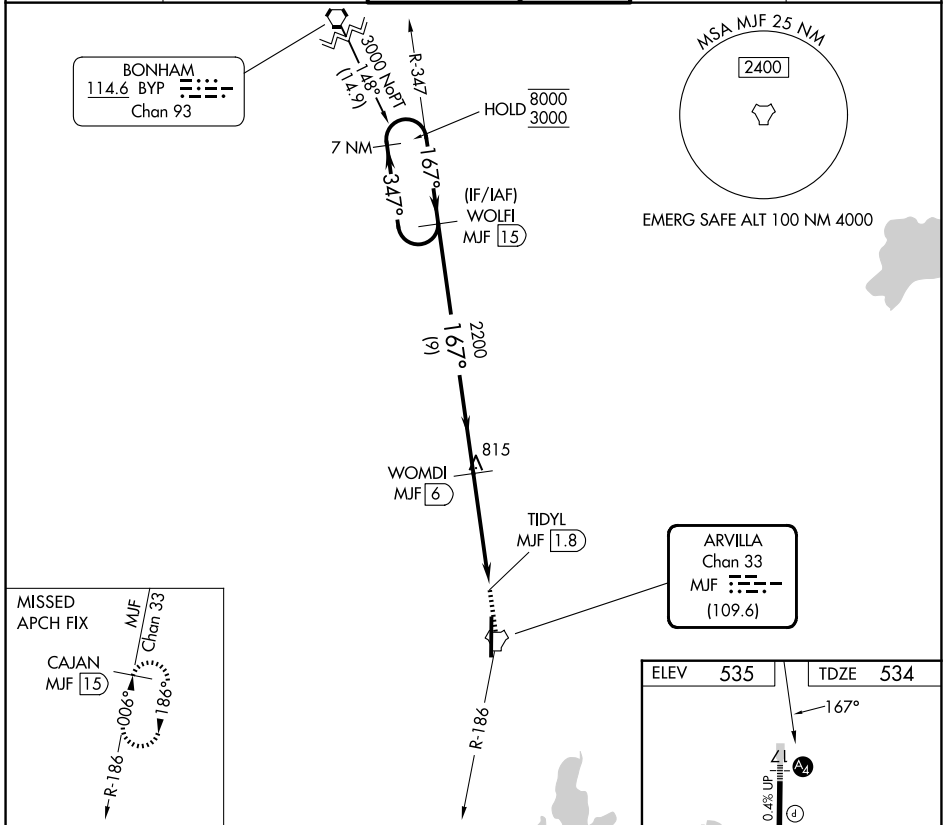
TACAN MJF Chan 33 (109.6)	APP CRS 167°	Rwy Ldg TDZE 534 Apt Elev 535
---	------------------------	---

TACAN RWY 17

MAJORS (GVT)

<p>▽ ▲</p> <p>For inop ALS, increase S-17 Cat E visibility to 1½ SM.</p>	<p>MAIS</p>	<p>MISSED APPROACH: Climb to 1200 then climbing right turn to 3000 on MJF TACAN R-186 to CAJAN/MJF 15 DME and hold.</p>
--	-------------	---

AWOS-3 133.425	FORT WORTH CENTER 132.025 317.75	MAJORS TOWER ★ 118.65 (CTAF) 0 385.425	GND CON 121.7 335.8	UNICOM 122.95
--------------------------	--	--	-------------------------------	-------------------------



CATEGORY	A	B	C	D	E
S-TACAN 17	1060-1	526 (600-1)	1060-1¼ 526 (600-1¼)		
CIRCLING	1060-1¼ 525 (600-1¼)	1080-1¼ 545 (600-1¼)	1080-1½ 545 (600-1½)	1240-2¼ 705 (800-2¼)	1300-2¾ 765 (800-2¾)

SC-2, 14 MAY 2026 to 11 JUN 2026

SC-2, 14 MAY 2026 to 11 JUN 2026