

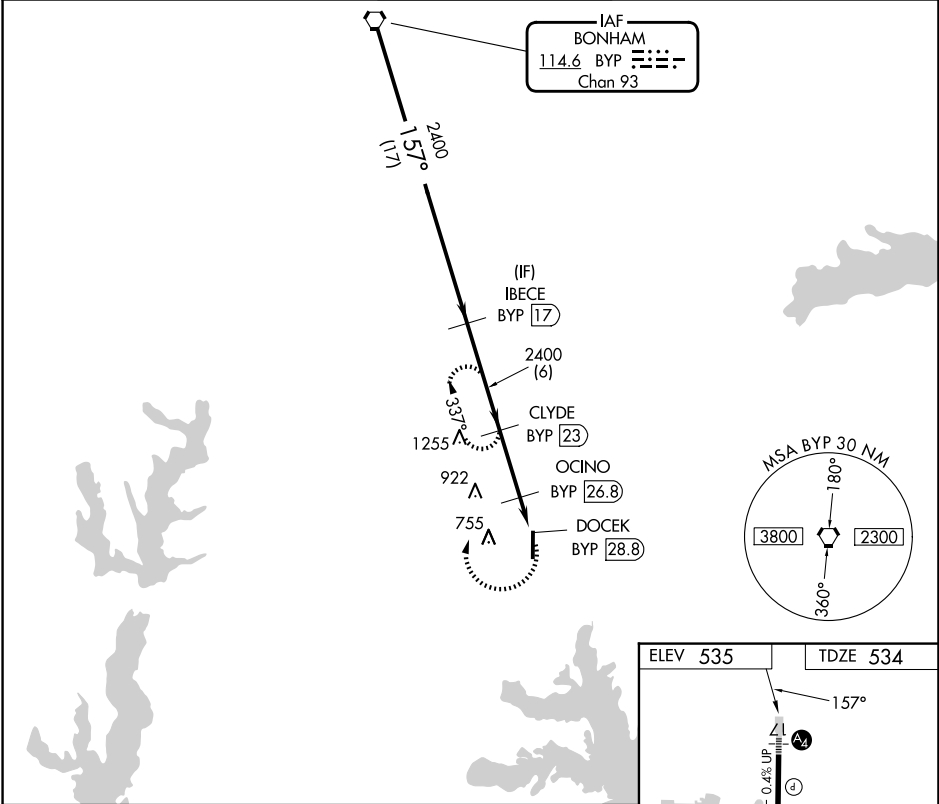
VORTAC BYP <b>114.6</b> Chan 93	APP CRS <b>157°</b>	Rwy Ldg <b>8030</b>
	TDZE <b>534</b>	
	Apt Elev <b>535</b>	

# VOR/DME RWY 17

MAJORS (GVT)

**⚠** When local altimeter setting not received, use Terrell altimeter setting and increase all MDA 80 feet, increase Circling Cats C/D/E visibility by ½ SM. **⚠** MISSED APPROACH: Climbing right turn to 2400 via BYP R-157 to CLYDE /23 DME and hold.

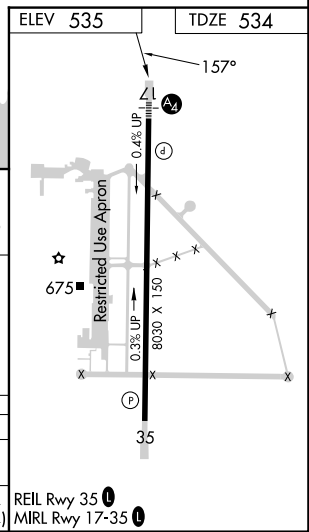
AWOS-3 <b>133.425</b>	FORT WORTH CENTER <b>132.025 317.75</b>	MAJORS TOWER ★ <b>118.65 (CTAF) 0 385.425</b>	GND CON <b>121.7 335.8</b>	UNICOM <b>122.95</b>
--------------------------	--	--	-------------------------------	-------------------------



VGSI and descent angles not coincident (VGSI Angle 3.00/TCH 74).

Procedure Turn NA	BYP VORTAC	IBECE BYP 17	CLYDE BYP 23	OCINO BYP 26.8	DOCEK BYP 28.8
2400	157°	2400	2400	*1240	3.16° TCH 50
*1300 when using Terrell Muni altimeter setting.					
	17 NM	6 NM	3.8 NM	2 NM	

CATEGORY	A	B	C	D	E
S-17	1120-1 586 (600-1)	1120-1¼ 586 (600-1¼)	1120-1½ 586 (600-1½)	1120-2 586 (600-2)	
CIRCLING	1120-1 585 (600-1)	1120-1¼ 585 (600-1¼)	1120-1½ 585 (600-1½)	1240-2¼ 705 (800-2¼)	1300-2¾ 765 (800-2¾)



SC-2, 14 MAY 2026 to 11 JUN 2026

SC-2, 14 MAY 2026 to 11 JUN 2026