

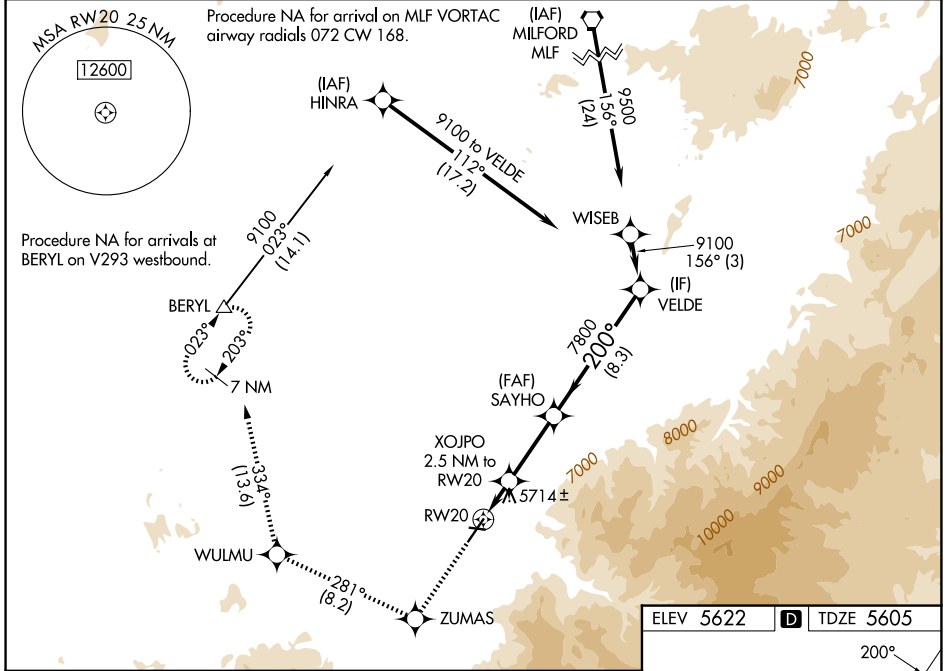
WAAS CH <b>72640</b> <b>W20A</b>	APP CRS <b>200°</b>	Rwy Ldg TDZE Apt Elev	<b>8653</b> <b>5605</b> <b>5622</b>
--	------------------------	-----------------------------	---

# RNAV (GPS) RWY 20

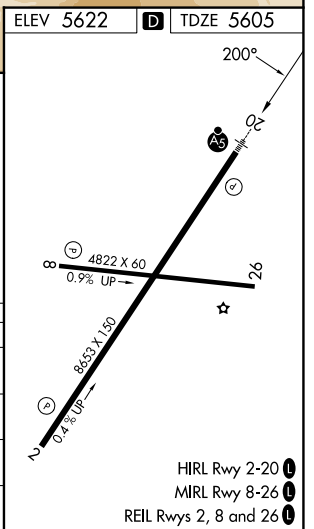
CEDAR CITY RGNL (CDC)

RNP APCH.	MALSR 	MISSED APPROACH: Climb to 9800 direct ZUMAS and on track 281° to WULMU and on track 334° to BERYL and hold.

ASOS <b>119.025</b>	SALT LAKE CITY CENTER <b>125.575 379.275</b>	UNICOM <b>123.0 (CTAF)</b>
------------------------	---	-------------------------------



9800	ZUMAS	WULMU	BERYL	SAYHO	VELDE
	tr 281°	tr 334°			
*LNAV only					
	XOJPO 2.5 NM to RW20		7800	9100	
	*1.6 NM to RW20		7800	9100	
	RW20		6440*	GP 3.00°	TCH 47
	-1.6 NM	0.9 NM	4.3 NM	8.3 NM	
CATEGORY	A	B	C	D	
LPV DA	5825-1/2		220 (300-1/2)		
LNAV/VNAV DA	6015-3/4		410 (400-3/4)		
LNAV MDA	6180-1/2 575 (600-1/2)		6180-1/4 575 (600-1/4)		
CIRCLING	6180-1 558 (600-1)		6180-1 558 (600-1%) 6180-2 558 (600-2)		



SW-4, 14 MAY 2026 to 11 JUN 2026

SW-4, 14 MAY 2026 to 11 JUN 2026