

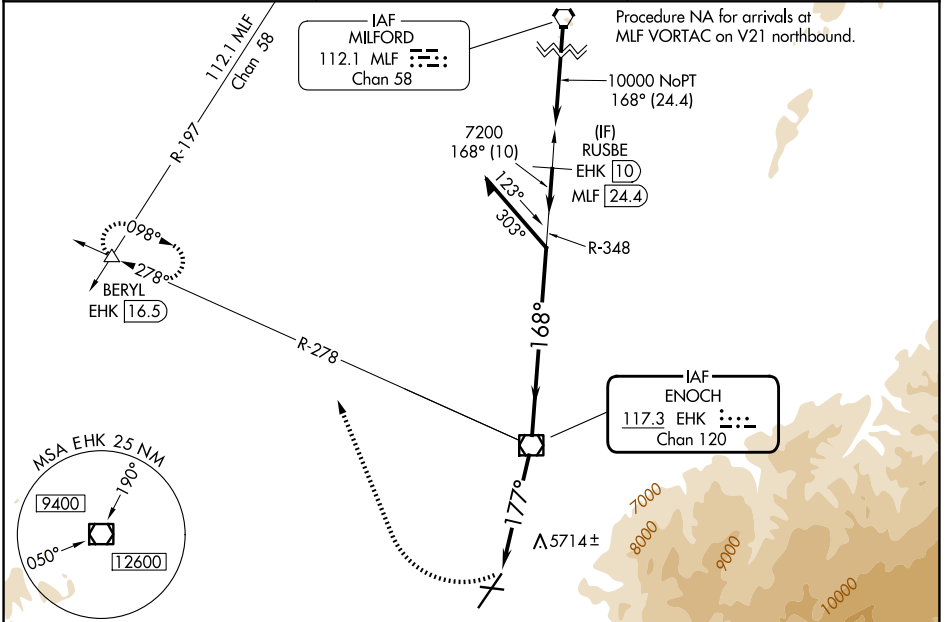
VOR/DME EHK <b>117.3</b> Chan 120	APP CRS <b>177°</b>	Rwy Ldg TDZE Apt Elev <b>8653</b> <b>5605</b> <b>5622</b>
---	------------------------	--

# VOR RWY 20

CEDAR CITY RGNL (CDC)

Circling NA southeast of Rwy 2-20. For inop ALS S-20* increase Cat C/D visibility to 1 1/2 SM.	MALS R	MISSED APPROACH: Climbing right turn to 11500 on heading 322° and on EHK VOR/DME R-278 to BERYL INT/EHK 16.5 DME and hold, continue climb-in-hold to 11500.
		*Missed approach requires minimum climb of 247 feet per NM to 7500.

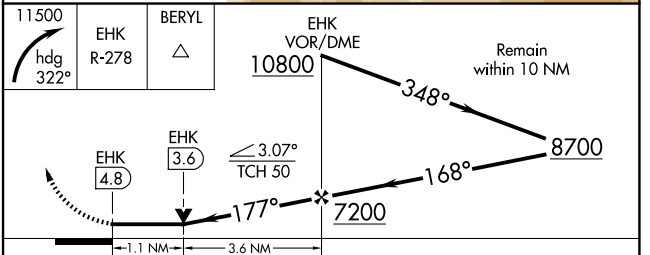
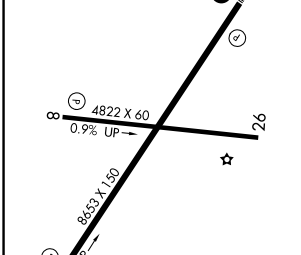
ASOS <b>119.025</b>	SALT LAKE CITY CENTER <b>125.575 379.275</b>	UNICOM <b>123.0 (CTAF)</b>
------------------------	---	-------------------------------



SW-4, 14 MAY 2026 to 11 JUN 2026

SW-4, 14 MAY 2026 to 11 JUN 2026

ELEV 5622	<b>D</b>	TDZE 5605
-----------	----------	-----------



CATEGORY	A	B	C	D
S-20*	6020-1/2 415 (400-1/2)		6020-3/4 415 (400-3/4)	
S-20	6300-1/2 695 (700-1/2)		6300-1 695 (700-1)	
CIRCLING	6300-1 678 (700-1)		6300-2 678 (700-2)	6300-2 1/4 678 (700-2 1/4)

FAF to MAP 4.8 NM

Knots	60	90	120	150	180
Min:Sec	4:48	3:12	2:24	1:55	1:36