

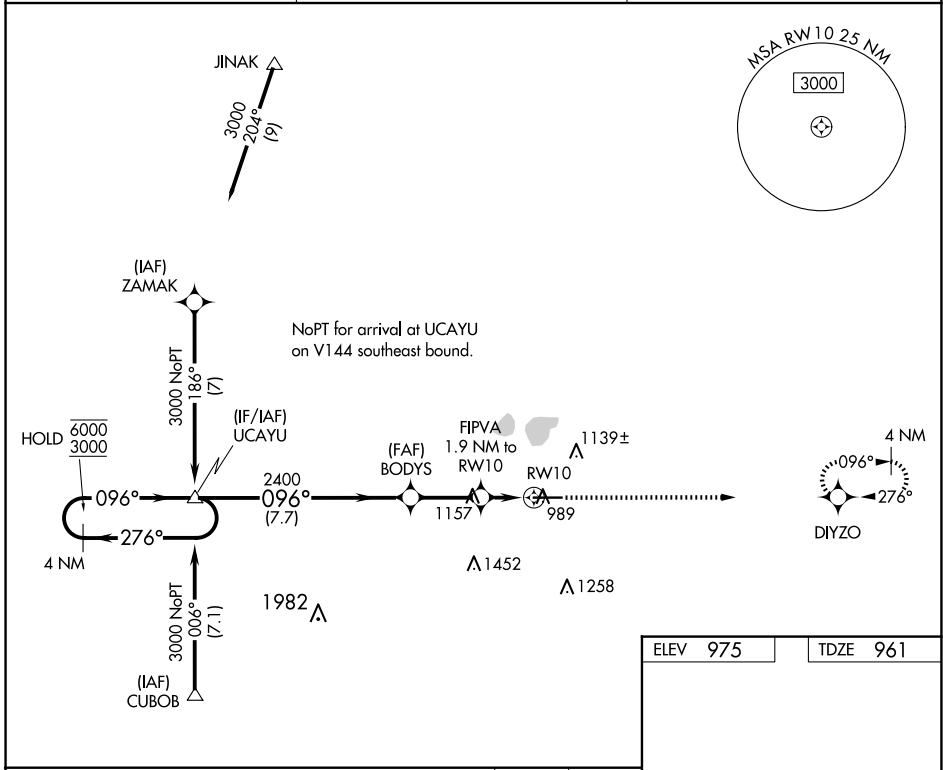
WAAS CH 65816 W10A	APP CRS 096°	Rwy ldg TDZE Apt Elev	6000 961 975
--	------------------------	-----------------------------	---

RNAV (GPS) RWY 10

LIMA ALLEN COUNTY (AOH)

RNP APCH.	<p>▼ Rwy 10 helicopter visibility reduction below 3/4 SM NA. For uncompensated Baro-VNAV systems, LNAV/VNAV NA below -16°C or above 54°C.</p> <p>▲ MISSED APPROACH: Climb to 3000 direct DIYZO and hold.</p>
-----------	--

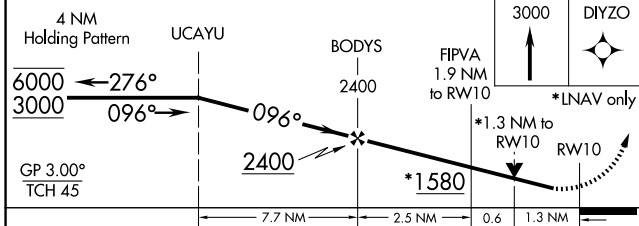
ASOS 128.725	COLUMBUS APP CON 121.825 323.15	UNICOM 122.7 (CTAF) 0
------------------------	---	---------------------------------



EC-2, 14 MAY 2026 to 11 JUN 2026

EC-2, 14 MAY 2026 to 11 JUN 2026

ELEV 975	TDZE 961
----------	----------



<table border="1"> <tr> <td>CATEGORY</td> <td>A</td> <td>B</td> <td>C</td> <td>D</td> </tr> <tr> <td>LPV DA</td> <td colspan="4">1211-1 250 (300-1)</td> </tr> <tr> <td>LNAV/VNAV DA</td> <td colspan="4">1272-1 311 (300-1)</td> </tr> <tr> <td>LNAV MDA</td> <td>1420-1 459 (500-1)</td> <td colspan="3">1420-1³/₈ 459 (500-1³/₈)</td> </tr> </table>	CATEGORY	A	B	C	D	LPV DA	1211-1 250 (300-1)				LNAV/VNAV DA	1272-1 311 (300-1)				LNAV MDA	1420-1 459 (500-1)	1420-1 ³ / ₈ 459 (500-1 ³ / ₈)		
CATEGORY	A	B	C	D																
LPV DA	1211-1 250 (300-1)																			
LNAV/VNAV DA	1272-1 311 (300-1)																			
LNAV MDA	1420-1 459 (500-1)	1420-1 ³ / ₈ 459 (500-1 ³ / ₈)																		
<p>REIL Rwy 10 and 28 0</p> <p>HIRL Rwy 10-28 0</p>																				