

APP CRS	Rwy Ldg	5697
302°	TDZE	4202
	Apt Elev	4216

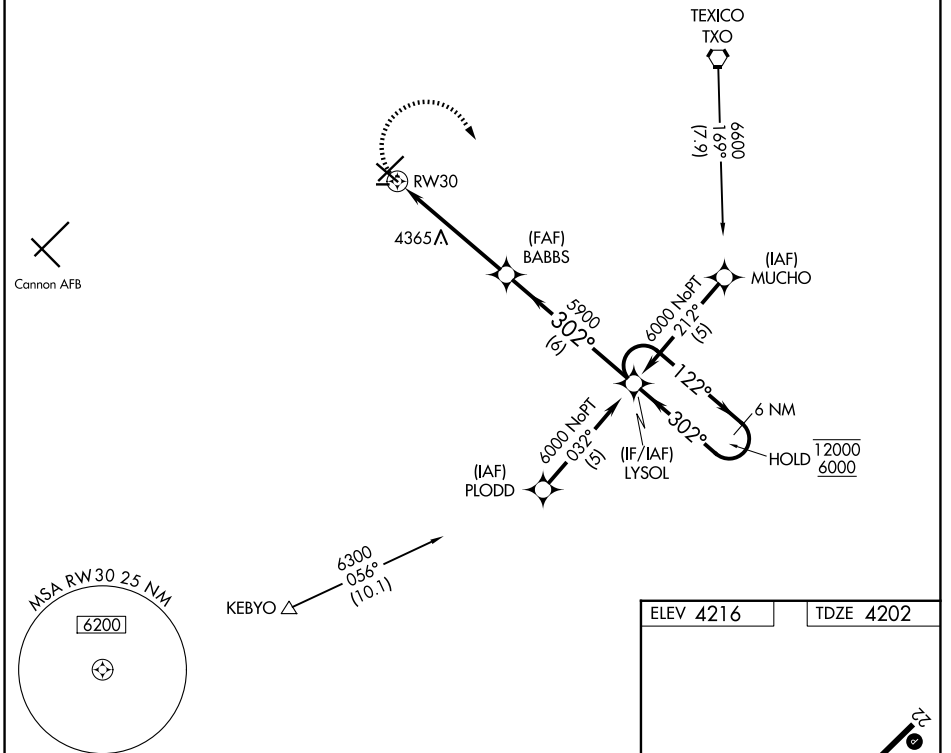
RNAV (GPS) RWY 30

CLOVIS RGNL (CVN)

RNP APCH - GPS.	MISSED APPROACH: Climbing right turn to 6000 direct LYSOL and hold.
<p>CAUTION: Cannon AFB 12 NM WSW, heavy USAF fighter traffic. Circling NA to Rwys 8 and 26.</p>	

AWOS-3PT 135.375	CANNON APP CON 118.425 352.1	UNICOM 122.8 (CTAF) 0
----------------------------	--	---------------------------------

Procedure NA for arrivals at TXO VORTAC via V62 northwest bound.



SW-1, 14 MAY 2026 to 11 JUN 2026

SW-1, 14 MAY 2026 to 11 JUN 2026

6000	LYSOL	VGSI and descent angles not coincident (VGSI Angle 4.00/TCH 63)	LYSOL	6 NM Holding Pattern
<p>BABBS</p> <p>1.1 NM to RWY 30</p> <p>1.1 NM</p> <p>4 NM</p> <p>6 NM</p> <p>302°</p> <p>122°</p> <p>302°</p> <p>5900</p> <p>12000</p> <p>6000</p> <p>3.05°</p> <p>TCH 50</p>				
CATEGORY	A	B	C	D
RNAV MDA	4620-1	418 (500-1)	4620-1¼	418 (500-1¼)
CIRCLING	4680-1	464 (500-1)	4700-1½	4820-2
			484 (500-1½)	604 (700-2)

