

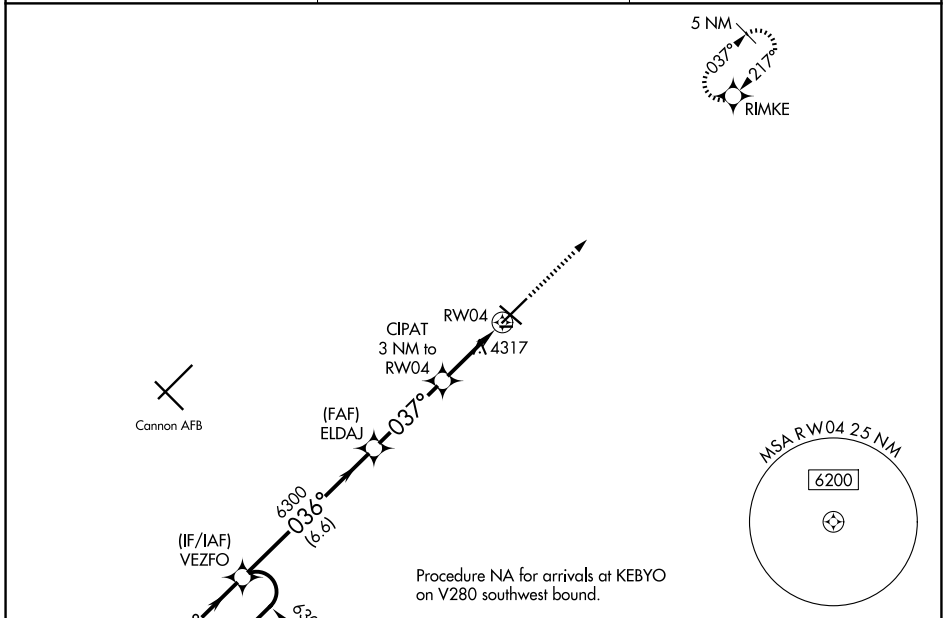
WAAS CH <b>97300</b> <b>W04A</b>	APP CRS <b>037°</b>	Rwy Ldg TDZE Apt Elev	<b>7200</b> <b>4205</b> <b>4216</b>
--	------------------------	-----------------------------	---

# RNAV (GPS) RWY 4

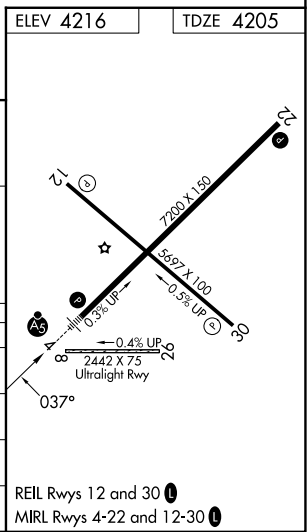
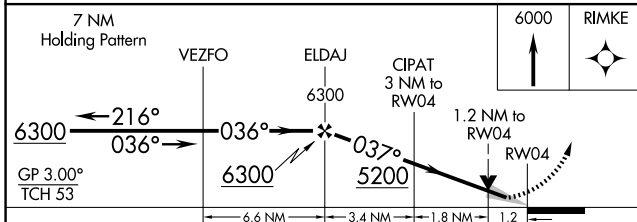
CLOVIS RGNL (CVN)

RNP APCH - GPS.	MALSR	MISSED APPROACH: Climb to 6000 direct RIMKE and hold.
<p>▼ For uncompensated Baro-VNAV systems, LNAV/VNAV NA below -23°C or above 49°C. For inop ALS, increase LNAV/VNAV all Cats visibility to ¾ SM. Circling NA to Rwy 8 and 26.</p>		

AWOS-3PT <b>135.375</b>	CANNON APP CON <b>118.425 352.1</b>	UNICOM <b>122.8 (CTAF) 0</b>
----------------------------	--	---------------------------------



Procedure NA for arrivals at KEBYO on V280 southwest bound.



CATEGORY	A	B	C	D
LPV DA		4405-½	200 (200-½)	
LNAV/VNAV DA		4455-½	250 (300-½)	
LNAV MDA	4640-½	435 (500-½)	4640-¾	435 (500-¾)
CIRCLING	4680-1	464 (500-1)	4700-1½ 484 (500-1½)	4820-2 604 (700-2)

REIL Rwy 12 and 30 0  
MIRL Rwy 4-22 and 12-30 0

SW-1, 14 MAY 2026 to 11 JUN 2026

SW-1, 14 MAY 2026 to 11 JUN 2026