

WAAS CH 73014 W03A	APP CRS 034°	Rwy Ldg TDZE Apt Elev	6001 624 625
--	------------------------	-----------------------------	---

RNAV (GPS) RWY 3

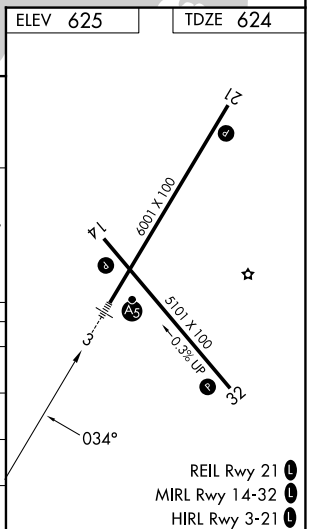
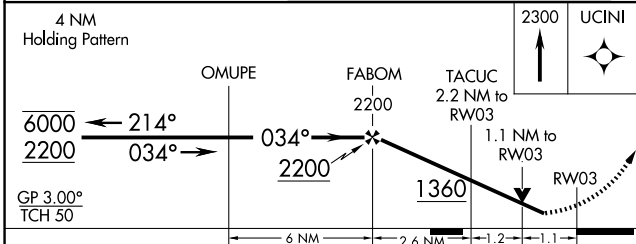
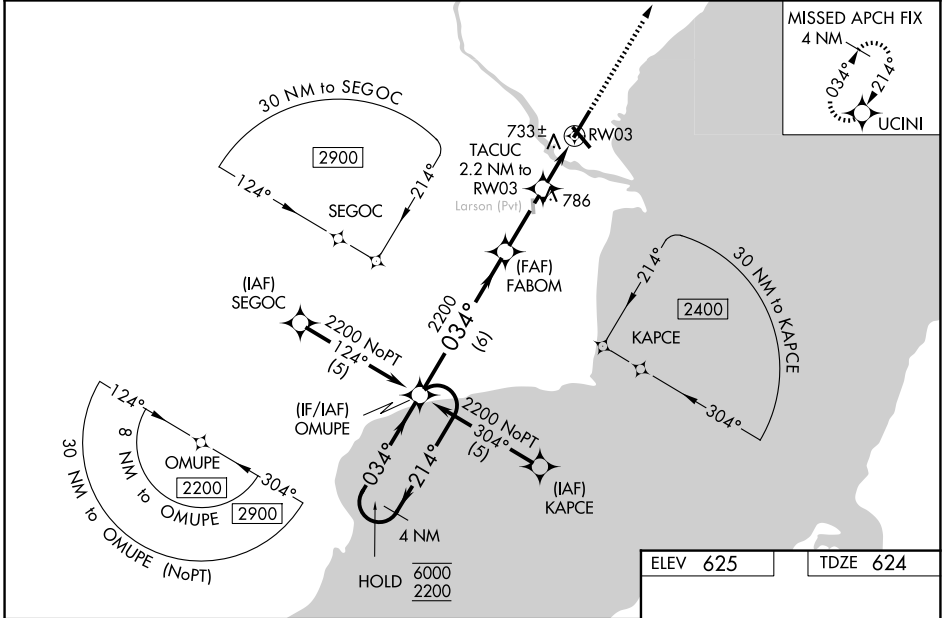
MENOMINEE RGNL (MNM)

RNP APCH - GPS.

▼ Baro-VNAV and VDP NA when using SUE altimeter setting. Circling Rwy 14, 32 NA at night. For uncompensated Baro-VNAV systems, LNAV/VNAV NA below -16°C or above 54°C. Rwy 3 helicopter visibility reduction below ¾ SM NA. Inop table does not apply to LPV and LNAV all Cats. When local altimeter setting not received, use SUE altimeter setting: increase LPV DA to 959 feet; increase LNAV/VNAV DA to 1209 feet and all visibilities ¼ SM; increase all MDAs 60 feet and Circling visibility Cats C and D to ¾ SM. For inop ALS when using SUE altimeter setting increase LNAV MDA visibility Cat C and D to 1 ¼ SM. Inop table does not apply to LPV all Cats and LNAV Cats A and B when using SUE altimeter setting.

MALSR
MISSED APPROACH:
Climb to 2300 direct UCINI and hold.

AWOS-3PT 121.45	GREEN BAY APP CON ★ 120.3 338.2	UNICOM 122.8 (CTAF)
---------------------------	---	-------------------------------



CATEGORY	A	B	C	D
LPV DA		900-1	276 (300-1)	
LNAV/VNAV DA		1150-1	526 (600-1)	
LNAV MDA		1000-1	376 (400-1)	
CIRCLING	1200-1	575 (600-1)	1200-1½ 575 (600-1½)	1380-2½ 755 (800-2½)

EC-1, 14 MAY 2026 to 11 JUN 2026

EC-1, 14 MAY 2026 to 11 JUN 2026