

WAAS CH 70412 W36A	APP CRS 357°	Rwy ldg 6103 TDZE 995 Apt Elev 1016
--	------------------------	--

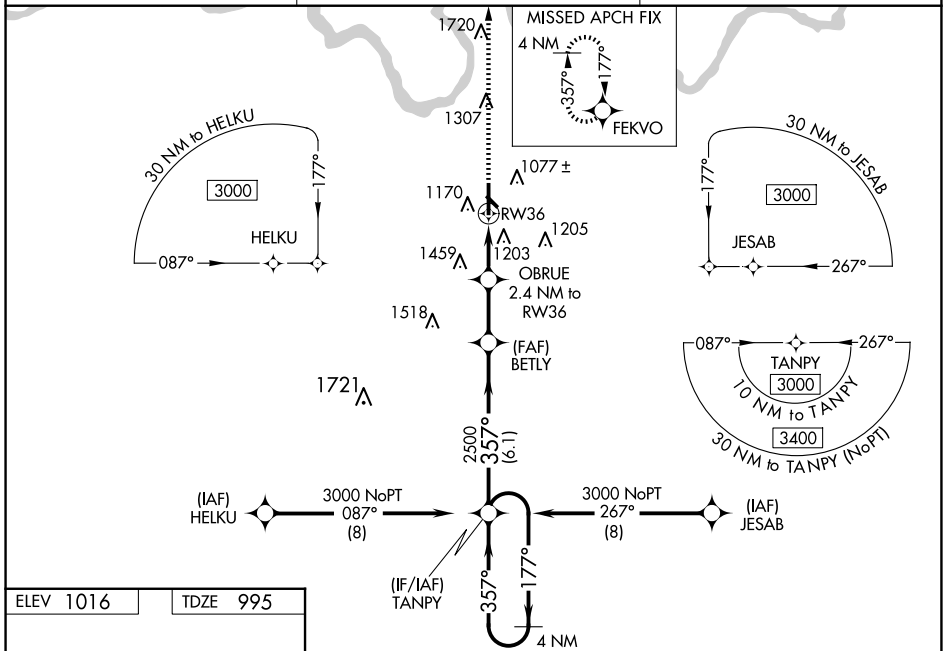
RNAV (GPS) RWY 36

ADA RGNL (ADH)

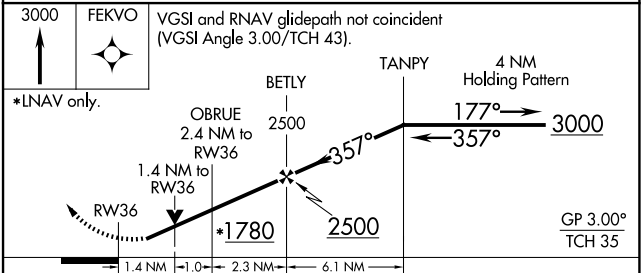
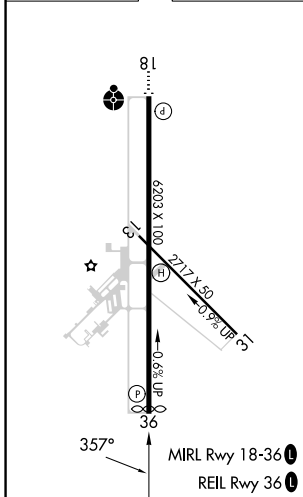
⚠ For uncompensated Baro-VNAV systems, LNAV/VNAV NA below -17°C (2°F) or above 54°C (130°F). Baro-VNAV and VDP NA when using Seminole altimeter setting.
 ⚠ Circling Rwy 31 NA at night. Rwy 36 helicopter visibility reduction below ¾ SM NA. DME/DME RNP-0.3 NA. When local altimeter setting not received, use Seminole altimeter setting: increase LPV DA to 1311 feet, LNAV/VNAV DA to 1600 feet and all MDA 80 feet. Increase LPV all Cats and LNAV Cats C and D visibility ¼ SM, increase LNAV/VNAV all Cats visibility to 2½ SM. Increase Circling Cats C/D visibility ½ SM.

MISSED APPROACH: Climb to 3000 direct FEKVO and hold.

AWOS-3PT 118.725	FORT WORTH CENTER 132.2 338.35	UNICOM 122.8 (CTAF) 0
----------------------------	--	---------------------------------



ELEV 1016	TDZE 995
-----------	----------



CATEGORY	A	B	C	D
LPV DA		1245-7/8	250 (300-7/8)	
LNAV/VNAV DA		1534-17/8	539 (600-17/8)	
LNAV MDA	1460-1	465 (500-1)	1460-13/8	465 (500-13/8)
CIRCLING	1520-1 504 (600-1)	1640-1 624 (700-1)	1820-21/4 804 (900-21/4)	1820-21/2 804 (900-21/2)

SC-1, 14 MAY 2026 to 11 JUN 2026

SC-1, 14 MAY 2026 to 11 JUN 2026