

WAAS CH <b>50525</b> <b>W36A</b>	APP CRS <b>357°</b>	Rwy Idg TDZE <b>3125</b> Apt Elev <b>3125</b>	<b>5904</b> <b>3125</b> <b>3125</b>
--	------------------------	---	---

# RNAV (GPS) RWY 36

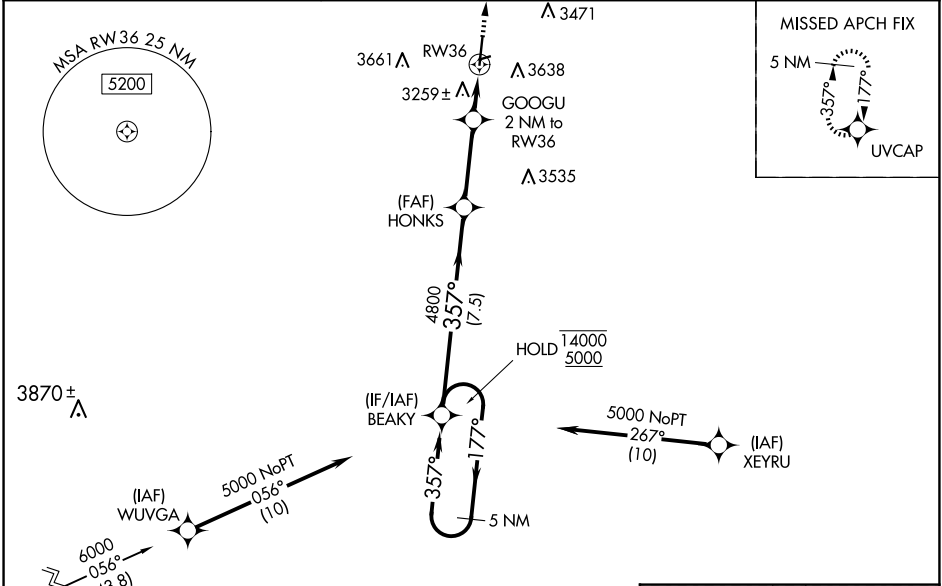
GUYMON MUNI (GUY)

RNP APCH - GPS.

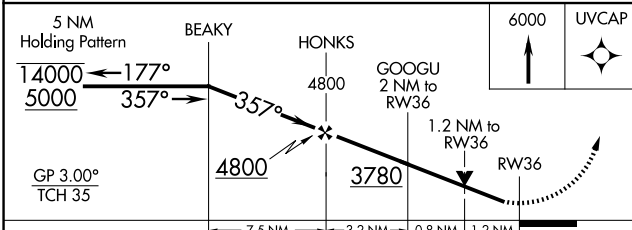
**⚠** Circling NA east of Rwy 18-36. Baro-VNAV and VDP NA when using Liberal altimeter setting. Rwy 36 helicopter visibility reduction below  $\frac{3}{4}$  SM NA. For uncompensated Baro-VNAV systems, LNAV/VNAV NA below -21°C or above 54°C. When local altimeter setting not received, use Liberal altimeter setting: increase LPV DA to 3487 feet; LNAV/VNAV DA to 3696 feet and all visibilities  $\frac{1}{4}$  SM; increase all MDAs 120 feet and visibility LNAV Cat C  $\frac{1}{4}$  SM, and Circling Cat C  $\frac{1}{2}$  SM. Circling NA to Rwy 6 and 24.

**MISSED APPROACH:**  
Climb to 6000 direct UVCAP and hold.

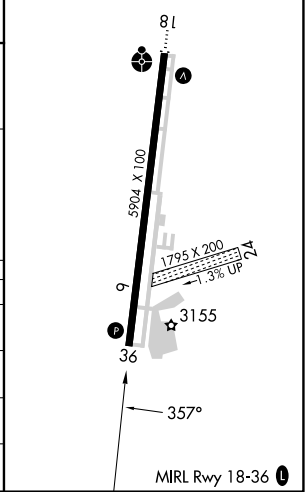
ASOS <b>119.925</b>	KANSAS CITY CENTER <b>134.0 257.625</b>	UNICOM <b>122.7 (CTAF)</b>
------------------------	--	-------------------------------



Procedure NA for arrival on DHT VORTAC airway radials 071 CW 129 and arrivals at DHT VORTAC on T420 northwest bound.



ELEV 3125	TDZE 3125
-----------	-----------



CATEGORY	A	B	C	D
LPV DA	3375- $\frac{3}{4}$		250 (300- $\frac{3}{4}$ )	NA
LNAV/VNAV DA	3584-1 $\frac{3}{8}$		459 (500-1 $\frac{3}{8}$ )	NA
LNAV MDA	3520-1	395 (400-1)	3520-1 $\frac{1}{8}$ 395 (400-1 $\frac{1}{8}$ )	NA
<b>CIRCLING</b>	3580-1 455 (500-1)	3600-1 475 (500-1)	3980-2 $\frac{1}{2}$ 855 (900-2 $\frac{1}{2}$ )	NA

SC-1, 14 MAY 2026 to 11 JUN 2026

SC-1, 14 MAY 2026 to 11 JUN 2026