

WAAS CH <b>90108</b> <b>W17A</b>	APP CRS <b>174°</b>	Rwy Idg <b>7401</b> TDZE <b>1000</b> Apt Elev <b>1000</b>
--	------------------------	---

# RNAV (GPS) RWY 17

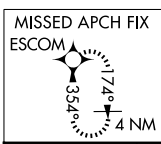
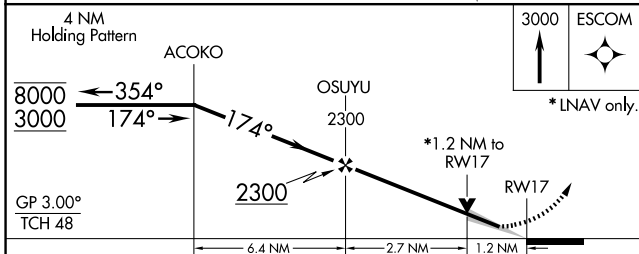
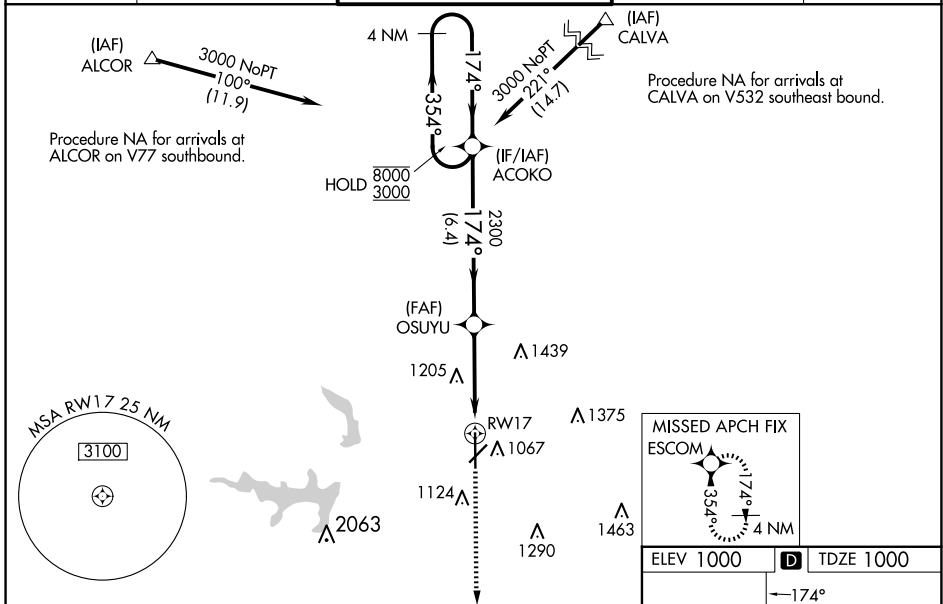
STILLWATER RGNL (SWO)

RNP APCH - GPS.

**⚠** For uncompensated Baro-VNAV systems, LNAV/VNAV NA below -15°C or above 54°C. VDP and Baro-VNAV NA when using Ponca City altimeter setting. For inop ALS when using Ponca City altimeter setting, increase LPV visibility to 7/8 SM, LNAV/VNAV visibility to 1 SM, and LNAV Cats C and D visibility to 1 3/8 SM. When local altimeter setting not received, use Ponca City altimeter setting: increase LPV DA to 1280 feet; increase LNAV/VNAV DA to 1359 feet and all visibilities 1/8 SM; increase all MDA 80 feet and visibility LNAV Cats C and D 1/4 SM and Circling Cat D 1/2 SM. For inop ALS, increase LNAV/VNAV visibility to 7/8 SM.

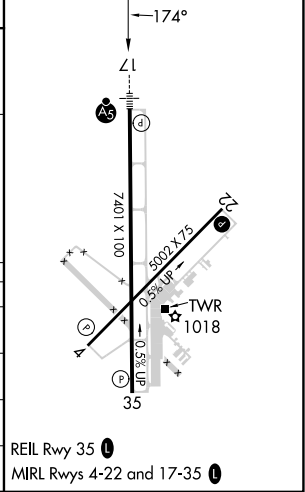
**MALS** MISSED APPROACH: Climb to 3000 direct ESCOM and hold.

ASOS <b>135.725</b>	KANSAS CITY CENTER <b>127.8 319.1</b>	STILLWATER TOWER ★ <b>125.35 (CTAF) 0</b>	GND CON <b>121.6</b>	UNICOM <b>122.95</b>
------------------------	--	--	-------------------------	-------------------------



ELEV 1000	<b>D</b> TDZE 1000
-----------	--------------------

CATEGORY	A	B	C	D
LPV DA		1200-1/2	200 (200-1/2)	
LNAV/VNAV DA		1279-1/2	279 (300-1/2)	
LNAV MDA	1440-1/2	440 (500-1/2)	1440-3/4	440 (500-3/4)
<b>C</b> CIRCLING	1440-1 440 (500-1)	1460-1 460 (500-1)	1520-1 1/2 520 (600-1 1/2)	1740-2 1/4 740 (800-2 1/4)



SC-1, 14 MAY 2026 to 11 JUN 2026

SC-1, 14 MAY 2026 to 11 JUN 2026