

WAAS CH <b>42633</b> <b>W35A</b>	APP CRS <b>354°</b>	Rwy Idg TDZE Apt Elev	<b>7401</b> <b>966</b> <b>1000</b>
--	------------------------	-----------------------------	--

# RNAV (GPS) RWY 35

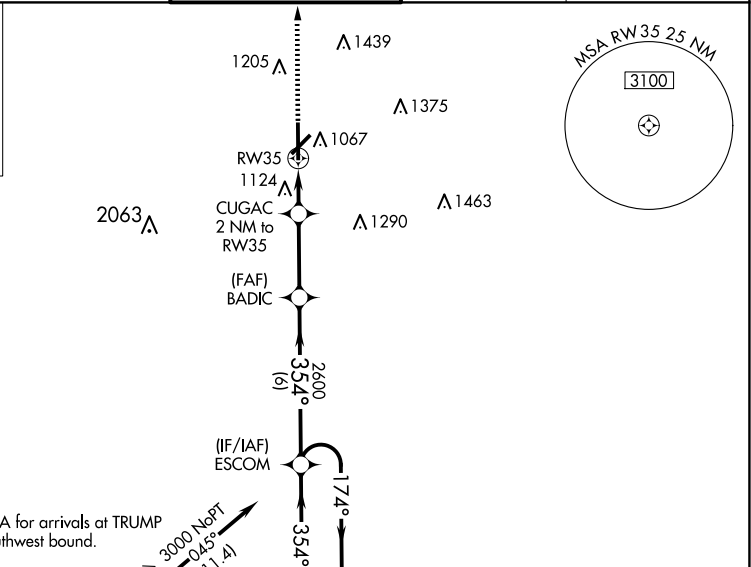
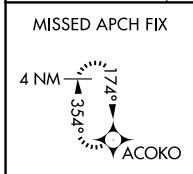
STILLWATER RGNL (SWO)

RNP APCH - GPS.

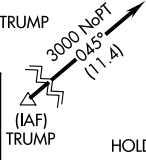
**⚠** Baro-VNAV and VDP NA when using Ponca City altimeter setting. For uncompensated Baro-VNAV systems, LNAV/VNAV NA below -16°C or above 54°C. When local altimeter setting not received, use Ponca City altimeter setting: increase LPV DA to 1246 feet and all visibilities 1/2 SM. Increase LNAV/VNAV DA to 1336 feet and all visibilities 1/2 SM. Increase all MDAs 80 feet and LNAV visibility Cats C/D 1/4, and Circling visibility Cat D 1/2 SM.

MISSED APPROACH:  
Climb to 3000 direct ACOKO and hold.

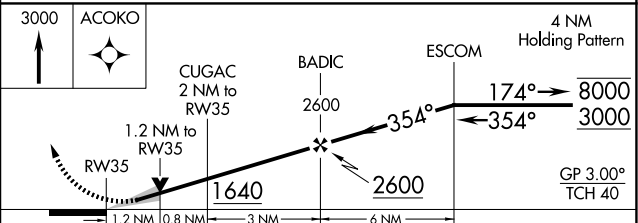
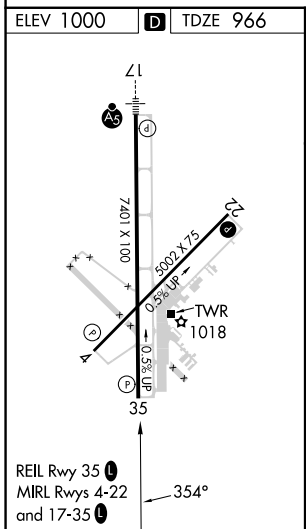
ASOS <b>135.725</b>	KANSAS CITY CENTER <b>127.8 319.1</b>	STILLWATER TOWER ★ <b>125.35 (CTAF) 0</b>	GND CON <b>121.6</b>	UNICOM <b>122.95</b>
------------------------	--	--	-------------------------	-------------------------



Procedure NA for arrivals at TRUMP on V354 southwest bound.



Procedure NA for arrivals at TOTES on V14 southwest bound.



CATEGORY	A	B	C	D
LPV DA		1166-3/4	200 (200-3/4)	
LNAV/VNAV DA		1256-1	290 (300-1)	
LNAV MDA	1380-1	414 (400-1)	1380-1 1/8	414 (400-1 1/8)
CIRCLING	1460-1 460 (500-1)	1480-1 480 (500-1)	1540-1 1/2 540 (600-1 1/2)	1740-2 1/4 740 (800-2 1/4)

SC-1, 14 MAY 2026 to 11 JUN 2026

SC-1, 14 MAY 2026 to 11 JUN 2026