

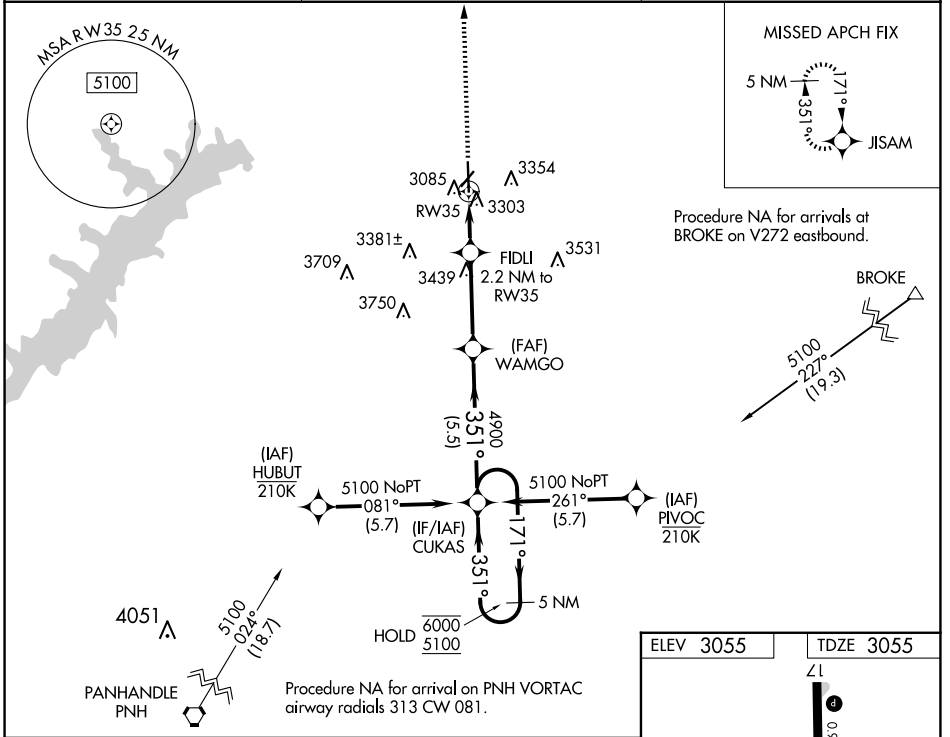
WAAS CH 53442 W35A	APP CRS 351°	Rwy Idg TDZE Apt Elev	6299 3055 3055
--	------------------------	-----------------------------	---

RNAV (GPS) RWY 35

HUTCHINSON COUNTY (B.G.D)

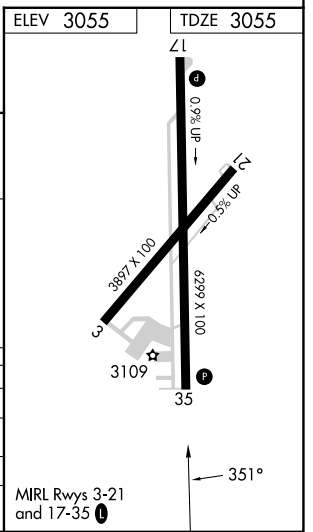
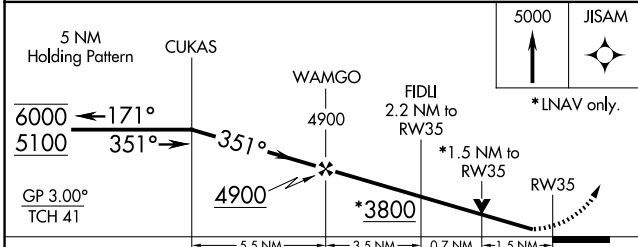
RNP APCH-GPS.		MISSED APPROACH: Climb to 5000 direct JISAM and hold.
	Rwy 35 helicopter visibility reduction below 3/4 SM NA. For uncompensated Baro-VNAV systems, LNAV/VNAV NA below -14°C or above 54°C.	

ASOS 118.325	AMARILLO APP CON ★ 119.5 307.0	UNICOM 123.0 (CTAF) 0
------------------------	--	---------------------------------



SC-2, 14 MAY 2026 to 11 JUN 2026

SC-2, 14 MAY 2026 to 11 JUN 2026



CATEGORY	A	B	C	D
LPV DA		3305-1	250 (300-1)	
LNAV/VNAV DA		3580-1½	525 (600-1½)	
LNAV MDA	3560-1	505 (600-1)	3560-1⅓	505 (600-1⅓)
CIRCLING	3620-1 565 (600-1)	3660-1 605 (700-1)	3760-2 705 (800-2)	3760-2¼ 705 (800-2¼)