

WAAS CH 58016 W31A	APP CRS 308°	Rwy Ldg TDZE Apt Elev	5001 1885 1915
--	------------------------	-----------------------------	---

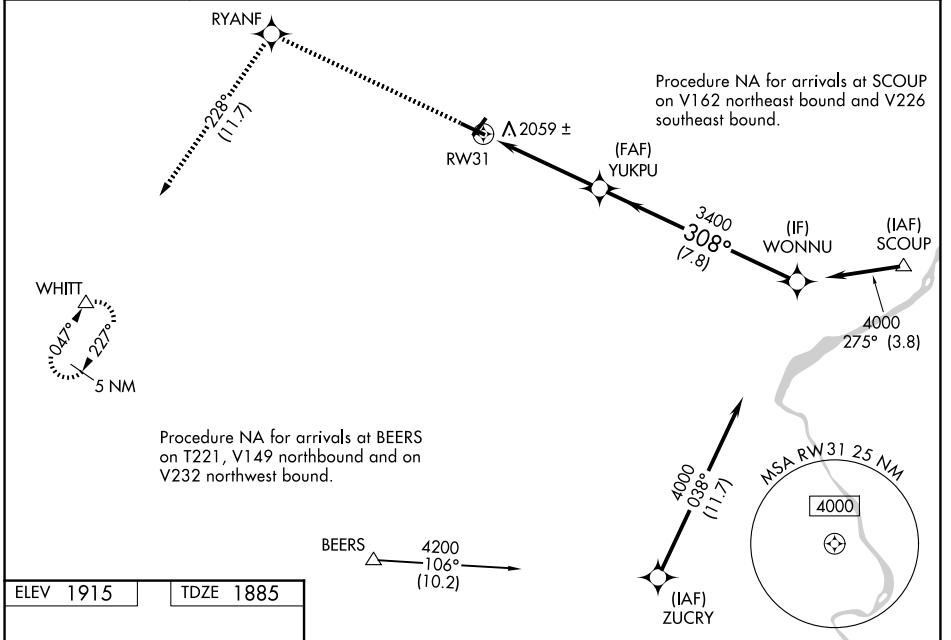
RNAV (GPS) RWY 31

POCONO MOUNTAINS RGNL (MPO)

⚠ Baro-VNAV NA when using Wilkes-Barre/Scranton altimeter setting. For uncompensated Baro-VNAV systems, LNAV/VNAV NA below -18°C (0°F) or above 54°C (130°F).
⚠ Rwy 31 helicopter visibility reduction below ¾ SM NA. DME/DME RNP-0.3 NA.
 When local altimeter setting not received, use Wilkes-Barre/Scranton altimeter setting: increase LPV DA to 2403 feet and visibility ¼ SM, LNAV/VNAV DA to 2446 feet and visibility ¾ SM; increase all MDAs 180 feet and visibility LNAV Cat C/D ¾ SM and Circling Cat C/D ½ SM. Circling Rwy 23 NA at night.

MISSED APPROACH: Climb to 4200 direct RYANF and on track 228° to WHITT and hold.

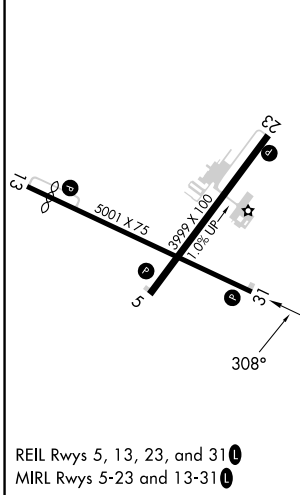
ASOS 120.275	WILKES-BARRE APP CON 126.3 256.7	CLNC DEL 125.3	UNICOM 122.7 (CTAF) 0
------------------------	--	--------------------------	---------------------------------



NE-4, 14 MAY 2026 to 11 JUN 2026

NE-4, 14 MAY 2026 to 11 JUN 2026

ELEV 1915	TDZE 1885
------------------	------------------



4200	RYANF	WHITT	VGSI and RNAV glidepath not coincident (VGSI Angle 3.50/TCH 40).	
↑	✧	tr 228°		
			GP 3.00° TCH 55	
CATEGORY	A	B	C	D
LPV DA	2224-1½		339 (400-1½)	
LNAV/VNAV DA	2267-1¼		382 (400-1¼)	
LNAV MDA	2320-1	435 (500-1)	2320-1¾	435 (500-1¾)
CIRCLING	2420-1 505 (600-1)	2500-1 585 (600-1)	2600-2 685 (700-2)	2660-2½ 745 (800-2½)