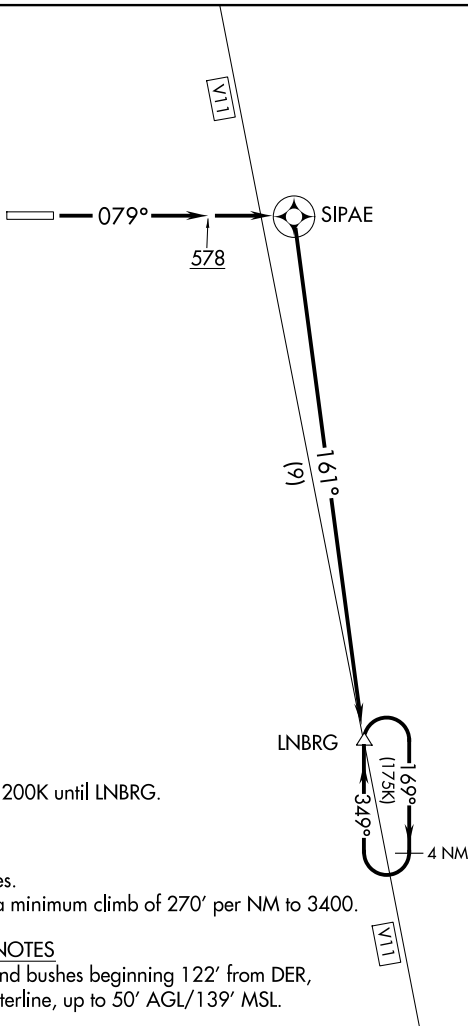


HCF CENTER  
118.45 278.3  
CLNC DEL  
122.3  
CTAF  
122.9



NOTE: GPS required.  
NOTE: RNAV 1.  
NOTE: Do not exceed 200K until LNBRG.

TAKEOFF MINIMUMS

Rwy 26: NA - Obstacles.  
Rwy 8: Standard with a minimum climb of 270' per NM to 3400.

TAKEOFF OBSTACLE NOTES

Rwy 8: Multiple trees and bushes beginning 122' from DER, 74' right of centerline, up to 50' AGL/139' MSL.

NOTE: Chart not to scale

DEPARTURE ROUTE DESCRIPTION

TAKEOFF RUNWAY 8: Climb heading 079° to 578 then direct SIPAE, then on track 161° to LNBRG, thence. . . .

. . . .climb in holding (if required) to cross LNBRG at or above 5400 before proceeding on assigned route.