

# RNAV (GPS) RWY 14

CRYSTAL (MIC)

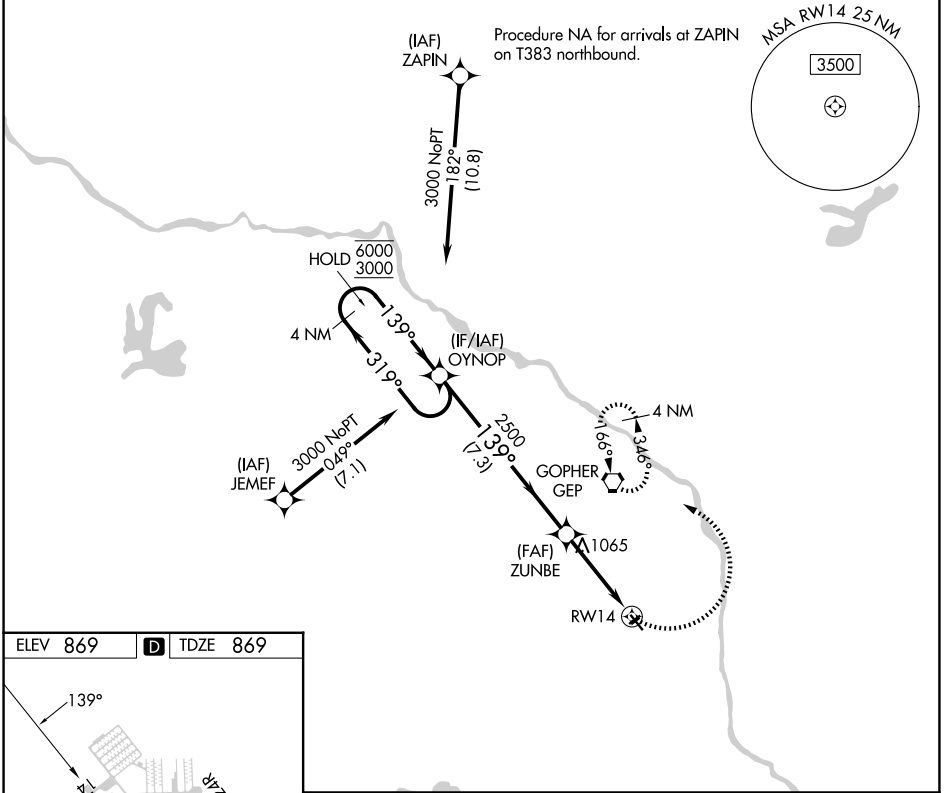
APP CRS <b>139°</b>	Rwy Ldg TDZE Apt Elev	<b>3508</b> <b>869</b> <b>869</b>
------------------------	-----------------------------	---

RNP APCH - GPS.

**▼** Rwy 14 helicopter visibility reduction below 3/4 SM NA.  
**▲** Circling NA to Rwy 6R and 24L.

MISSED APPROACH: Climbing left turn to 3100 direct GEP VORTAC and hold, continue climb-in-hold to 3100.

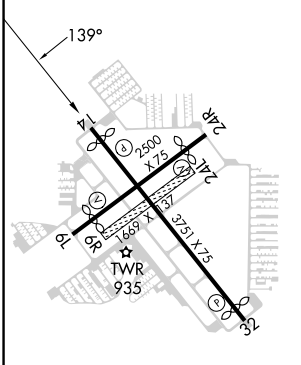
ATIS <b>124.475</b>	MINNEAPOLIS APP CON <b>126.5 335.65</b>	CRYSTAL TOWER ★ <b>120.7 (CTAF) 0</b>	GND CON <b>121.6</b>	CLNC DEL <b>121.6</b>	CLNC DEL <b>121.6</b> (When twr closed)	UNICOM <b>122.95</b>
------------------------	--	--	-------------------------	--------------------------	---	-------------------------



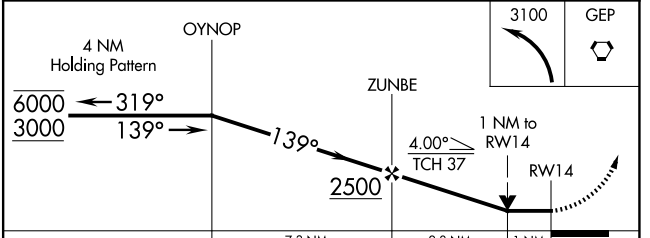
NC-1, 14 MAY 2026 to 11 JUN 2026

NC-1, 14 MAY 2026 to 11 JUN 2026

ELEV 869	<b>D</b>	TDZE 869
----------	----------	----------



REIL Rws 14 and 32	<b>0</b>
MIRL Rws 6L-24R and 14-32	<b>0</b>



CATEGORY	A	B	C	D
LNAV MDA	1320-1	451 (500-1)	NA	
CIRCLING	1340-1 471 (500-1)	1380-1 511 (600-1)	NA	