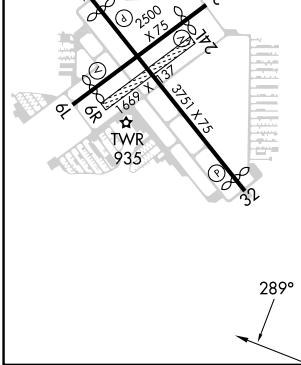
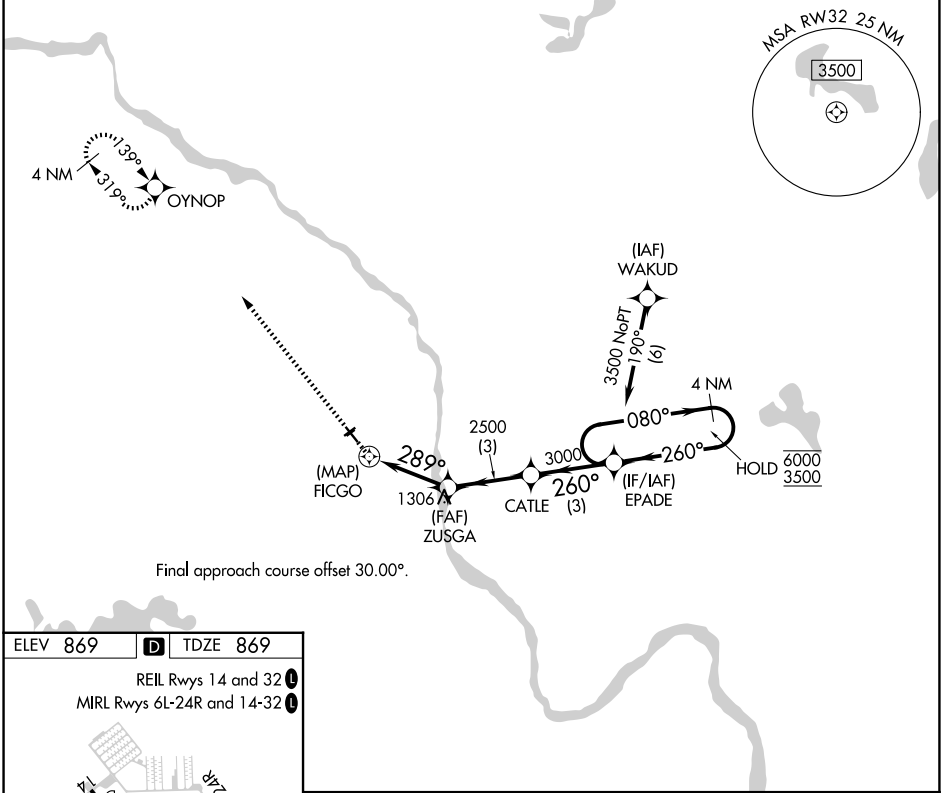


APP CRS	Rwy Ldg	3509
289°	TDZE	869
	Apt Elev	869

RNAV (GPS) RWY 32

CRYSTAL (MIC)

RNP APCH.		MISSED APPROACH: Climb to 3000 direct OYNOP and hold.						
<p>▼ Circling NA to Rwys 6R and 24L.</p> <p>▲ Rwy 32 helicopter visibility reduction below 3/4 SM NA.</p>		ATIS	MINNEAPOLIS APP CON	CRYSTAL TOWER ★	GND CON	CLNC DEL	CLNC DEL	UNICOM
124.475	126.5 335.65	120.7 (CTAF) 0	121.6	121.6	121.6	(When twr closed)	122.95	



3000	OYNOP	EPADE 4 NM Holding Pattern			
		ZUSGA	CATLE	EPADE	
		FICGO	ZUSGA	CATLE	EPADE
		289°	260°	080°	260°
		2500	3000	6000	3500
		0.8	3 NM	3 NM	3 NM
CATEGORY	A	B	C	D	
LNAV MDA	1380-1	511 (600-1)		NA	
CIRCLING	1380-1	511 (600-1)		NA	

NC-1, 14 MAY 2026 to 11 JUN 2026

NC-1, 14 MAY 2026 to 11 JUN 2026