


LOC I-JAE 111.75	APP CRS 130°	Rwy Ldg 6758 TDZE 1354 Apt Elev 1354
----------------------------	------------------------	---

ILS or LOC RWY 13


RANGE RGNL (HIB)

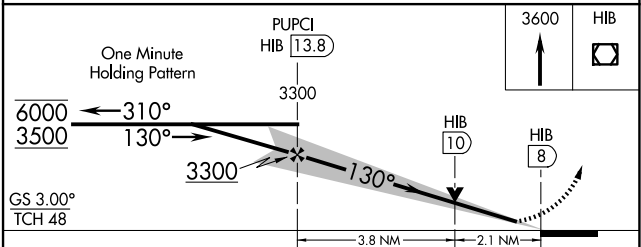
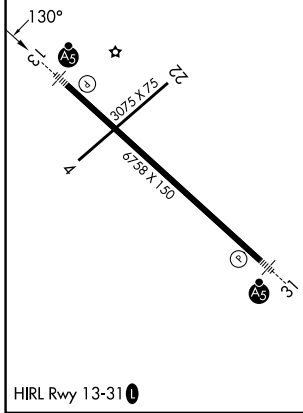
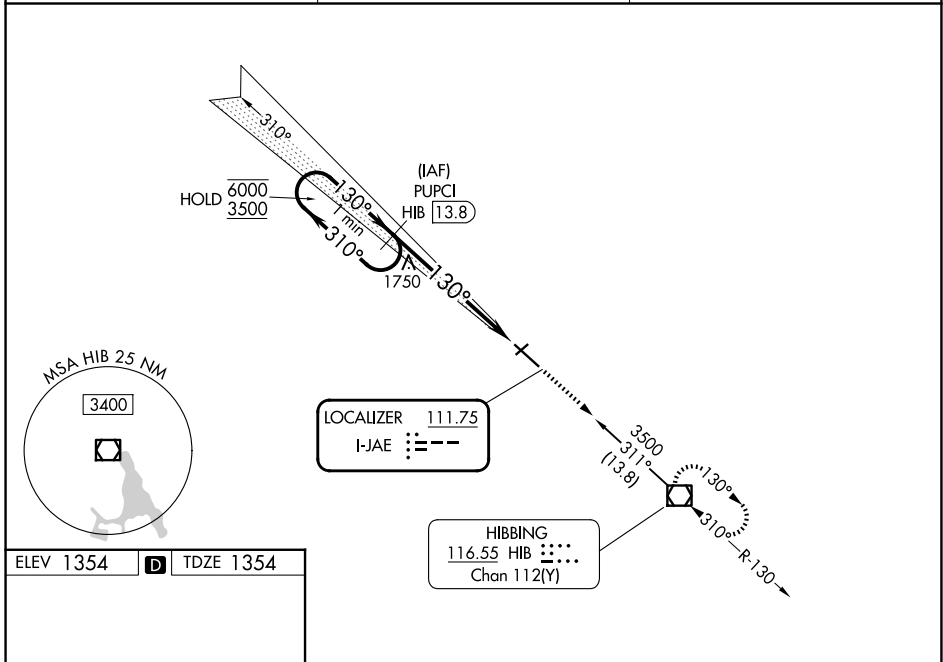
DME required.

⚠ Autopilot coupled approach NA below 2515. VDP NA when using Eveleth altimeter setting. Caution opposing ILS continuously on. When local altimeter setting not received, use Eveleth altimeter setting and increase S-ILS 13 DA to 1590 feet; increase all MDAs 40 feet and S-LOC 13 visibility Cat B/C/D ¼ SM, and Circling visibility Cat B/C/D ¼ SM. For inop ALS, increase S-LOC 13 Cat C/D visibility to 2 SM. For inop ALS when using Eveleth altimeter setting, increase S-LOC 13 Cat C/D visibility to 2 SM.

MALSRL 

MISSED APPROACH: Climb to 3600 direct HIB VOR/DME and hold.

ASOS 126.425	DULUTH APP CON 125.45 233.7	UNICOM 123.0 (CTAF) 
------------------------	---------------------------------------	---



CATEGORY	A	B	C	D
S-ILS 13	1554-½ 200 (200-½)			
S-LOC 13	2060-½ 706 (800-½)	2060-1⅝ 706 (800-1⅝)		
CIRCLING	2060-1 706 (800-1)	2060-2 706 (800-2)	2060-2¼ 706 (800-2¼)	

NC-1, 14 MAY 2026 to 11 JUN 2026

NC-1, 14 MAY 2026 to 11 JUN 2026