


LOC I-HIB 108.75	APP CRS 310°	Rwy Ldg TDZE Apt Elev	6758 1345 1354
----------------------------	------------------------	-----------------------------	---

ILS or LOC RWY 31

RANGE RGNL (HIB)

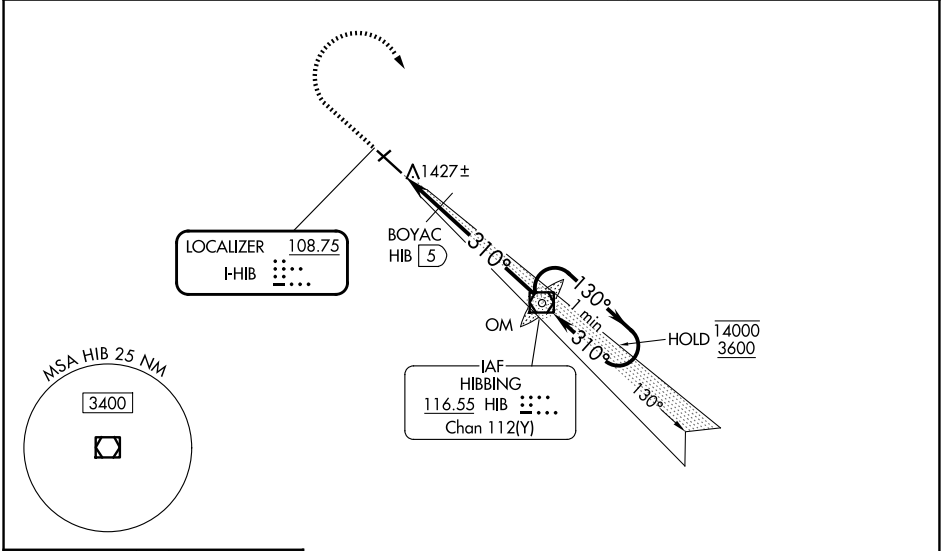
⚠ VDP NA when using Eveleth altimeter setting. Caution opposing ILS continuously on. When local altimeter setting not received, use Eveleth altimeter setting and increase S-ILS 31 DA to 1581 feet; increase all MDAs 40 feet and increase S-LOC 31 Cat C/D visibility 1/8 SM and Circling Cat C 1/4 SM. Increase BOYAC fix minimums S-LOC 31 Cat C/D visibility 1/8 SM and Circling Cat C 1/4 SM. For inop ALS when using Eveleth altimeter setting, increase BOYAC fix minimums S-LOC 31 Cat C/D visibility to 1 SM. *1780 when using Eveleth altimeter setting. # DME from HIB VOR/DME. DME use requires simultaneous reception of I-HIB and HIB DME.

MALSR

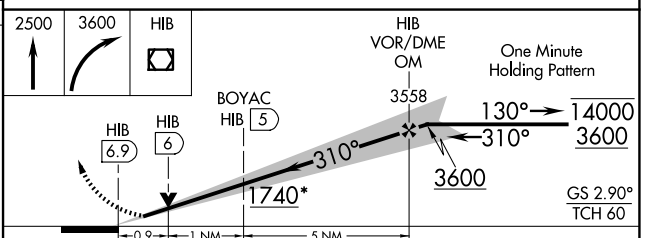


MISSED APPROACH:
Climb to 2500 then climbing right turn to 3600 direct HIB VOR/DME and hold.

ASOS 126.425	DULUTH APP CON 125.45 233.7	UNICOM 123.0 (CTAF)
------------------------	---------------------------------------	-------------------------------



ELEV 1354	D	TDZE 1345
-----------	----------	-----------



HIRL Rwy 13-31

FAF to MAP 6.9 NM

Knots	60	90	120	150	180
Min:Sec	6:54	4:36	3:27	2:46	2:18

CATEGORY	A	B	C	D
S-ILS 31	1545-1/2 200 (200-1/2)			
S-LOC 31	1740-1/2	395 (400-1/2)	1740-5/8	395 (400-5/8)
CIRCLING	1900-1	546 (600-1)	1920-1 1/2	1980-2
			566 (600-1 1/2)	626 (700-2)
# BOYAC FIX MINIMUMS				
S-LOC 31	1680-1/2 335 (400-1/2)			
CIRCLING	1900-1	546 (600-1)	1920-1 1/2	1980-2
			566 (600-1 1/2)	626 (700-2)

NC-1, 14 MAY 2026 to 11 JUN 2026

NC-1, 14 MAY 2026 to 11 JUN 2026