

WAAS CH 69222 W13A	APP CRS 130°	Rwy Ldg TDZE 1354 Apt Elev 1354
----------------------------------------	------------------------	-----------------------------------------------------

RNAV (GPS) RWY 13

RANGE RGNL (HIB)

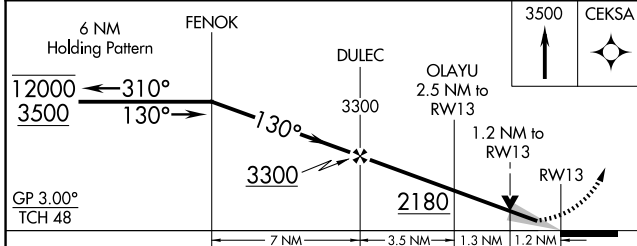
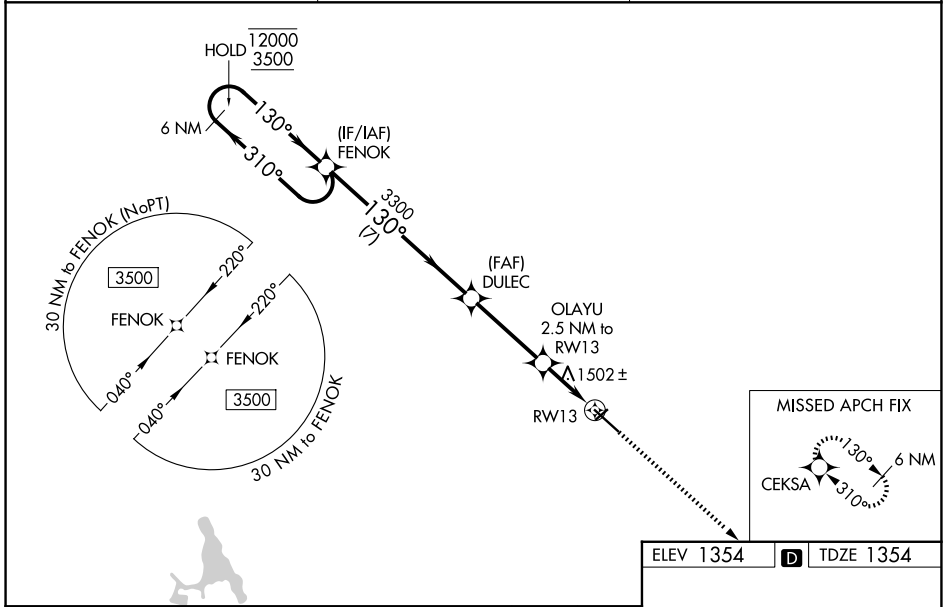
RNP APCH - GPS.

Baro-VNAV and VDP NA when using Eveleth altimeter setting. For uncompensated Baro-VNAV systems, LNAV/VNAV NA below -17°C or above 54°C. When local altimeter setting not received, use Eveleth altimeter setting and increase LPV DA to 1640 feet; increase LNAV/VNAV DA to 1766 feet and all visibilities 1/8 SM. Increase all MDAs 40 feet and LNAV visibility Cat C/D 1/8 SM, and Circling visibility Cat C 1/4 SM. For inop ALS, increase LNAV/VNAV all Cats visibility to 1 SM. For inop ALS when using Eveleth altimeter setting, increase LPV all Cats visibility to 7/8 SM, LNAV/VNAV all Cats to 1 1/8 SM, LNAV Cat C/D to 1 1/8 SM.

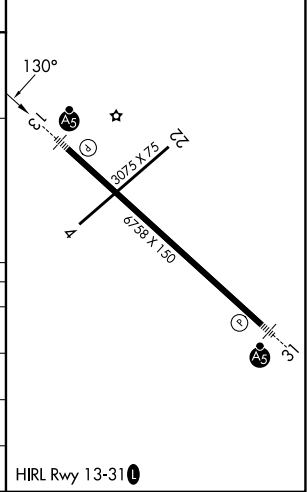
MALSRS

MISSED APPROACH: Climb to 3500 direct CEKSA and hold.

ASOS 126.425	DULUTH APP CON 125.45 233.7	UNICOM 123.0 (CTAF)
------------------------	---------------------------------------	-------------------------------



ELEV 1354	TDZE 1354
-----------	-----------



CATEGORY	A	B	C	D
LPV DA	1604-1/2		250 (300-1/2)	
LNAV/VNAV DA	1730-5/8		376 (400-5/8)	
LNAV MDA	1800-1/2 446 (500-1/2)		1800-7/8 446 (500-7/8)	
CIRCLING	1900-1 546 (600-1)		1920-1 1/2 626 (600-1 1/2) 1980-2 626 (700-2)	

NC-1, 14 MAY 2026 to 11 JUN 2026

NC-1, 14 MAY 2026 to 11 JUN 2026