

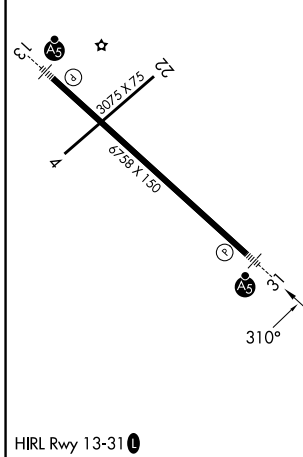
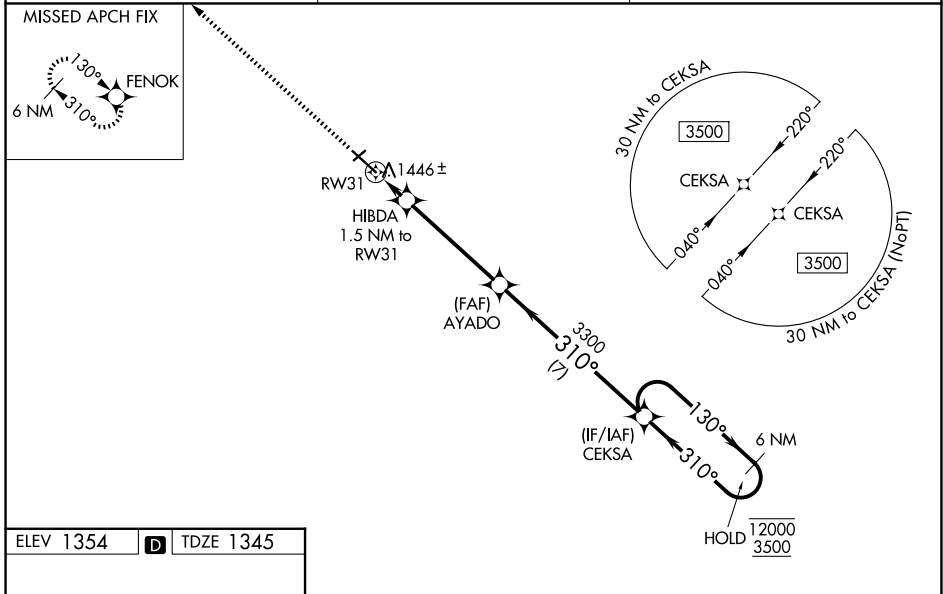
WAAS CH 65722 W31A	APP CRS 310°	Rwy Ldg TDZE 1345 Apt Elev 1354
--	------------------------	---

RNAV (GPS) RWY 31

RANGE RGNL (HIB)

RNP APCH - GPS.		MALSR 	MISSED APPROACH: Climb to 3500 direct FENOK and hold.
Baro-VNAV and VDP NA when using Eveleth altimeter setting. For uncompensated Baro-VNAV systems, LNAV/VNAV NA below -17°C or above 54°C. When local altimeter setting not received, use Eveleth altimeter setting and increase LPV DA to 1581 feet; increase LNAV/VNAV DA to 1643 feet; increase all MDAs 40 feet; and Circling visibility Cat C ¼ SM. For inop ALS, increase LNAV/VNAV all Cats visibility to ¾ SM, LNAV Cat C/D to 1 SM. For inop ALS when using Eveleth altimeter setting, increase LNAV/VNAV all Cats visibility to ¾ SM.			

ASOS 126.425	DULUTH APP CON 125.45 233.7	UNICOM 123.0 (CTAF) 0
------------------------	---------------------------------------	---------------------------------



ELEV 1354	D	TDZE 1345		
3500 FENOK VGSI and RNAV glidepath not coincident (VGSI Angle 2.90/TCH 62). HIBDA 1.5 NM to RWY 31 RWY 31 1860 1 NM to RWY 31 AYADO 3300 CEKSA 3300 6 NM Holding Pattern 130° → 12000 / 3500 ← 310°	GP 3.00° TCH 55			
1 NM 0.5 4.5 NM 7 NM				
CATEGORY	A	B	C	D
LPV DA	1545-½		200 (200-½)	
LNAV/VNAV DA	1607-½		262 (300-½)	
LNAV MDA	1700-½ 355 (400-½)		1700-⅝ 355 (400-⅝)	
CIRCLING	1900-1 546 (600-1)		1920-1½ 566 (600-1½) 1980-2 626 (700-2)	

NC-1, 14 MAY 2026 to 11 JUN 2026

NC-1, 14 MAY 2026 to 11 JUN 2026