

LOC/DME I-FYJ <b>109.55</b> Chan 32(Y)	APP CRS <b>094°</b>	Rwy Ldg TDZE Apt Elev	<b>5000</b> <b>14</b> <b>20</b>
--	------------------------	-----------------------------	---------------------------------------

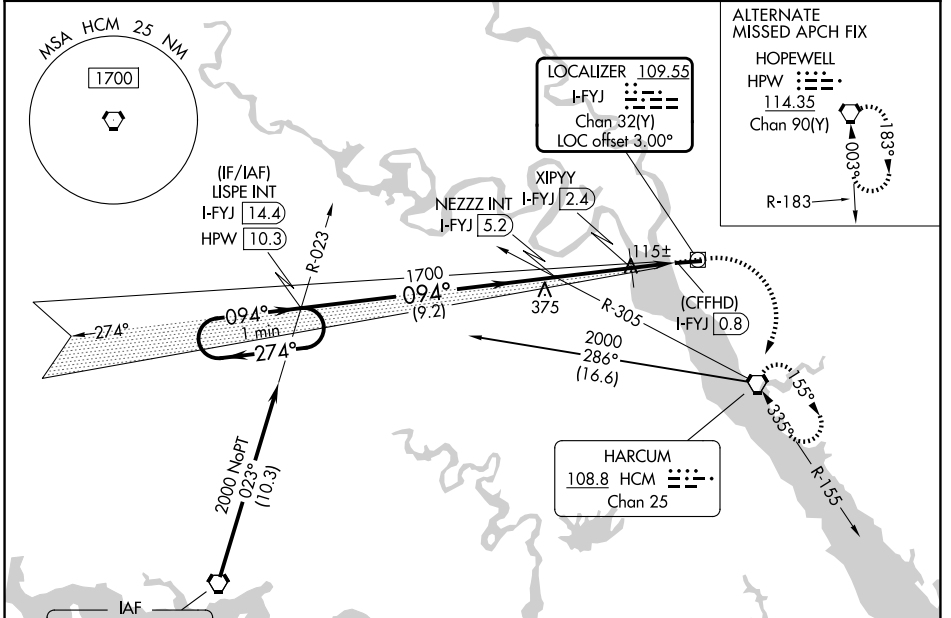
# LOC RWY 10

MIDDLE PENINSULA RGNL (F'YJ)

**NA** When local altimeter setting not received, use Newport News altimeter setting and increase all MDA 80 feet and increase S-10 Cat B and Circling Cat B visibility ¼ SM. VDP NA when using Newport News altimeter setting.

**MISSED APPROACH:** Climb to 500 then climbing right turn to 2000 direct HCM VORTAC and hold, continue climb-in-hold to 2000.

AWOS-3 <b>132.825</b>	POTOMAC APP CON <b>126.4 282.375</b>	UNICOM <b>123.0 (CTAF) 0</b>
--------------------------	---	---------------------------------



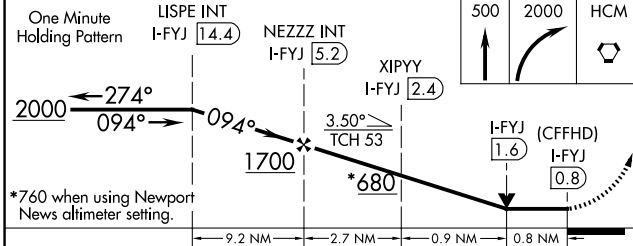
**ALTERNATE MISSED APCH FIX**

**HOPEWELL**  
HPW 114.35  
Chan 90(Y)

**LOCALIZER 109.55**  
I-FYJ  
Chan 32(Y)  
LOC offset 3.00°

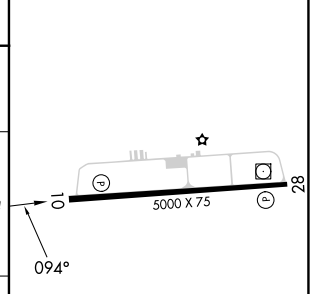
**HARPUM 108.8 HCM**  
Chan 25

Procedure NA for arrivals on HPW VORTAC airway radials 323 CW 025.



ELEV 20	TDZE 14
---------	---------

One Minute Holding Pattern	LISPE INT I-FYJ 14.4	NEZZZ INT I-FYJ 5.2	XIPYY I-FYJ 2.4	500	2000	HCM
2000	274°	094°	094°	↑	↷	⬡
*760 when using Newport News altimeter setting.						
← 9.2 NM		← 2.7 NM		← 0.9 NM		← 0.8 NM
CATEGORY	A	B	C	D		
S-10	680-1	666 (700-1)			NA	
CIRCLING	680-1	660 (700-1)			NA	
XIPYY FIX MINIMUMS						
S-10	380-1	366 (400-1)			NA	
CIRCLING	480-1 460 (500-1)	620-1 600 (600-1)			NA	



MIRL Rwy 10-28  
REIL Rws 10 and 28

FAF to MAP 4.4 NM

Knots	60	90	120	150	180
Min:Sec	4:24	2:56	2:12	1:46	1:28

NE-3, 14 MAY 2026 to 11 JUN 2026

NE-3, 14 MAY 2026 to 11 JUN 2026