

# TACAN RWY 30

TACAN NSI Chan <b>39</b>	APCH CRS <b>290°</b>	Rwy Idg <b>10,002</b> TDZE <b>506</b> Arprt Elev <b>506</b>
--------------------------	----------------------	---

[USN]

SAN NICOLAS ISLAND NOLF (KNSI)

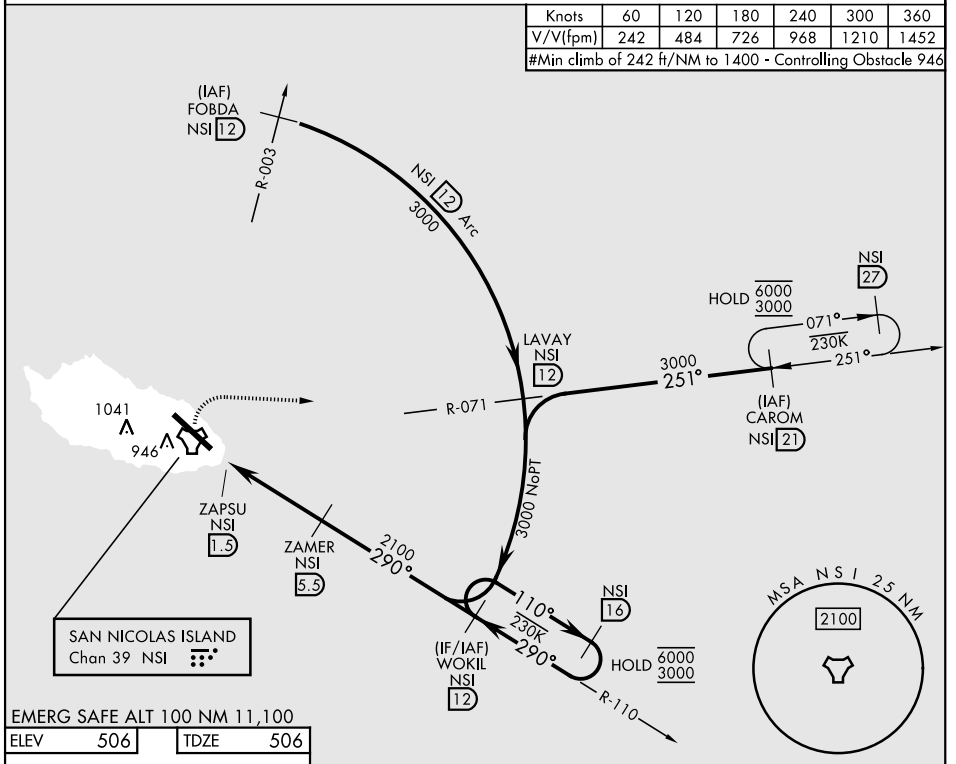
RADAR required  
 \* Circling not authorized SW of Rwy 12-30.

MISSED APPROACH: Climb to 1000, then climbing right turn to 3000, intercept NSI TACAN R-071 to LAVAY. Arc south on 12 DME arc to WOKIL.

CTAF  
**126.85 379.3**

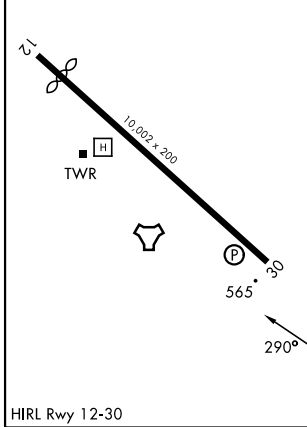
Knots	60	120	180	240	300	360
V/V(fpm)	242	484	726	968	1210	1452

#Min climb of 242 ft/NM to 1400 - Controlling Obstacle 946



EMERG SAFE ALT 100 NM 11,100

ELEV	506	TDZE	506
------	-----	------	-----



1000	3000	LAVAY NSI 12	WOKIL NSI 12	NSI 16	
NSI TACAN	ZAPSU NSI 1.5	ZAMER NSI 5.5	2100	6000/3000	
NSI R-071		110°		290°	
0.8		4 NM			
3.00°		TCH 50			
CATEGORY	A	B	C	D	E
S-30 #	820-1		314	(400-1)	
S-30	920-1	414 (500-1)	920-1½	414	(500-1½)
CIRCLING*	920-1 414 (500-1)	960-1 454 (500-1)	960-1½ 454 (500-1½)	1060-2	554 (600-2)

# TACAN RWY 30

SW-3, 14 MAY 2026 to 11 JUN 2026

SW-3, 14 MAY 2026 to 11 JUN 2026