

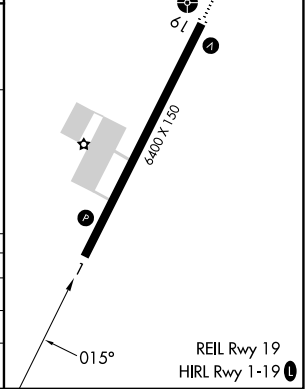
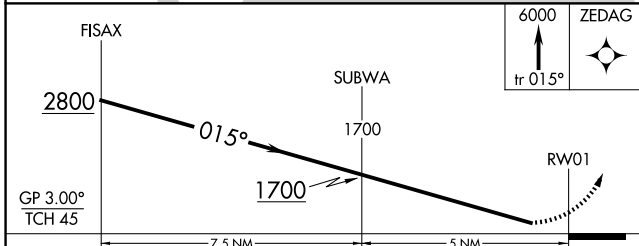
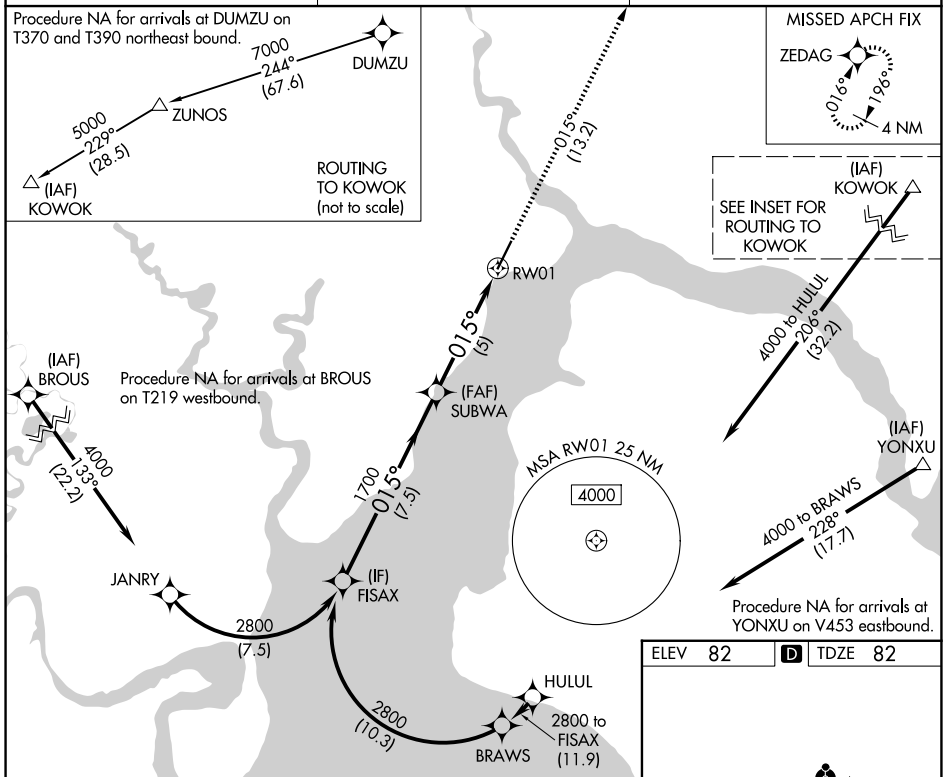
APP CRS	Rwy Ldg	6400
015°	TDZE	82
	Apt Elev	82

RNAV (RNP) Y RWY 1

DILLINGHAM (DLG)(PADL)

RNP AR APCH - GPS.	MISSED APPROACH: Climb to 6000 on track 015° to ZEDAG and hold, continue climb-in-hold to 6000.
▼ For uncompensated Baro-VNAV systems, procedure NA below -20°C or above 54°C.	

AFIS 125.0	ANCHORAGE CENTER 132.75 282.35	DILLINGHAM RADIO 123.6 (CTAF) 0
----------------------	--	---



CATEGORY	A	B	C	D
RNP 0.15 DA		367-1	285 (300-1)	
RNP 0.30 DA		437-1	355 (400-1)	

AUTHORIZATION REQUIRED

AK, 14 MAY 2026 to 09 JUL 2026

AK, 14 MAY 2026 to 09 JUL 2026