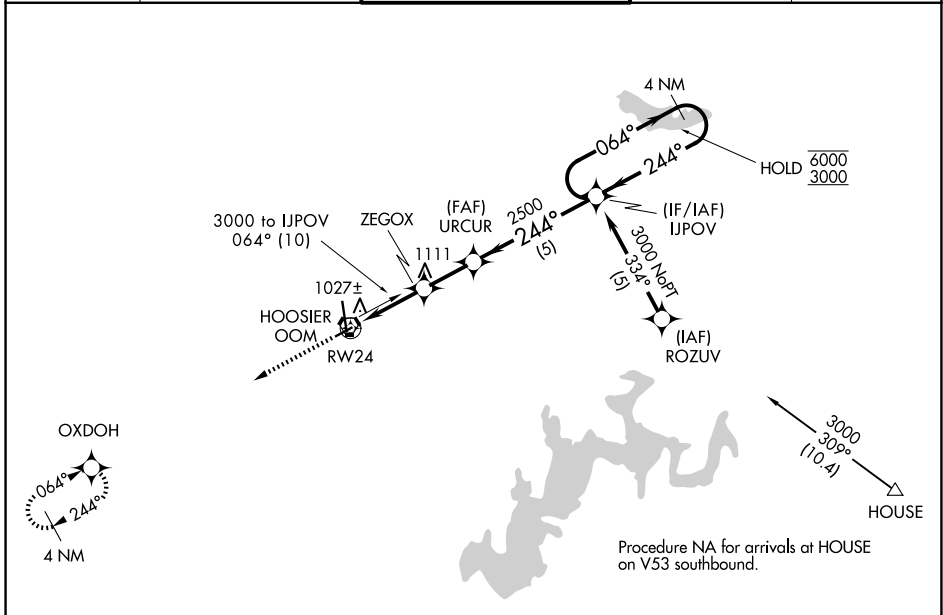


APP CRS	Rwy Ldg	3576
244°	TDZE	841
	Apt Elev	846

RNAV (GPS) RWY 24

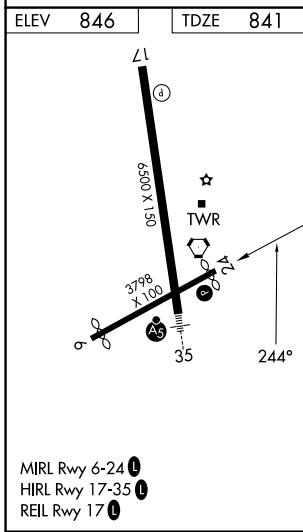
MONROE COUNTY (BMG)

RNP APCH - GPS.		MISSED APPROACH: Climb to 3000 on direct OXDOH and hold.		
<p>▼ Procedure NA at night. Rwy 24 helicopter visibility reduction below 1 SM NA.</p> <p>▲ When local altimeter setting not received, use HUF altimeter setting and increase all MDAs 140 feet and visibility Cats C and D 3/8 SM.</p>		ASOS	HULMAN APP CON	BLOOMINGTON TOWER *
		134.525	128.025 339.8	120.775 (CTAF) 0
		GND CON	UNICOM	
		121.9	122.95	



EC-2, 14 MAY 2026 to 11 JUN 2026

EC-2, 14 MAY 2026 to 11 JUN 2026



3000	OXDOH	VGSI and descent angles not coincident (VGSI Angle 4.00/TCH 37).		4 NM Holding Pattern
		ZEGOX	URUCUR	IJPOV
		≤ 3.06° TCH 31	2500	6000 / 3000
	RW24	1840		
		3 NM	2 NM	5 NM
CATEGORY	A	B	C	D
LNAV MDA	1320-1	479 (500-1)	1320-1 3/8	479 (500-1 3/8)