

WAAS CH <b>90419</b> <b>W24A</b>	APP CRS <b>245°</b>	Rwy Ldg TDZE Apt Elev	<b>3700</b> <b>295</b> <b>302</b>
--	------------------------	-----------------------------	---

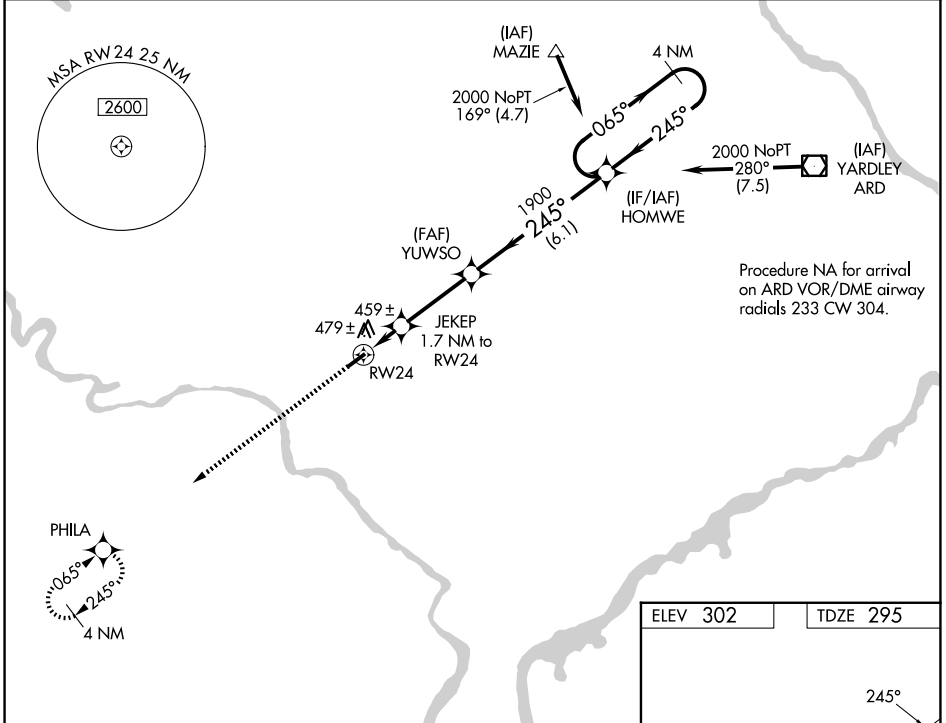
# RNAV (GPS) RWY 24

WINGS FLD (LOM)

**RNP APCH**  
 ▽ Baro-VNAV NA when using Pottstown altimeter setting. For uncompensated Baro-VNAV systems, LNAV/VNAV NA below -15°C (5°F) or above 54°C (130°F). When local altimeter setting not received, use Pottstown altimeter setting and increase all DA 35 feet and all MDA 40 feet. Rwy 24 helicopter visibility reduction below 3/4 SM NA.  
 ⚠

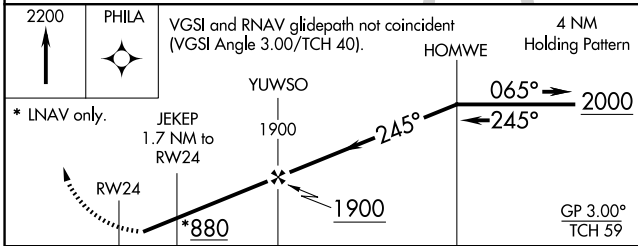
MISSED APPROACH: Climb to 2200 direct PHILA and hold.

AWOS-3 <b>118.925</b>	PHILADELPHIA APP CON <b>126.85 263.125</b>	CLNC DEL <b>135.3</b>	UNICOM <b>123.0 (CTAF) 0</b>
--------------------------	---	--------------------------	---------------------------------

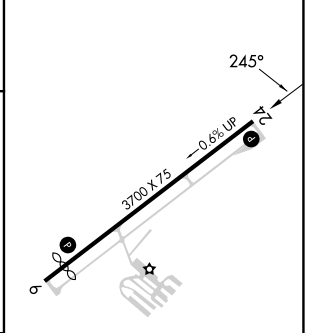


NE-4, 14 MAY 2026 to 11 JUN 2026

NE-4, 14 MAY 2026 to 11 JUN 2026



ELEV 302	TDZE 295
----------	----------



CATEGORY	A	B	C	D
LPV DA	567-1	272 (300-1)		NA
LNAV/VNAV DA	775-1 3/4	480 (500-1 3/4)		NA
LNAV MDA	740-1	445 (500-1)		NA
CIRCLING	780-1	478 (500-1)		NA

REIL Rwy 6 and 24 0  
 MIRL Rwy 6-24 0