

LOC/DME I-BJI <b>109.35</b> Chan 30 (Y)	APP CRS <b>253°</b>	Rwy Ldg TDZE Apt Elev	<b>5700</b> <b>1389</b> <b>1391</b>
---	------------------------	-----------------------------	---

# ILS or LOC RWY 25

BEMIDJI RGNL (BJI)

DME required. RADAR required for procedure entry.

MISSED APPROACH: Climb to 3000 then climbing left turn to 3400 on heading 185° and IDJ VOR/DME R-214 to CELIS/IDJ VOR/DME 8.1 DME and hold, continue climb-in-hold to 3400.

▼  
▲ NA

AWOS-3  
**119.275**

MINNEAPOLIS CENTER  
**134.75 251.1**

UNICOM  
**122.8 (CTAF) 0**

**LOCALIZER 109.35**  
I-BJI  
Chan 30 (Y)

**LAKE BEMIDJI**  
110.0 IDJ  
Chan 37

KAKVE  
I-BJI 3

(IAF)  
AFJIM  
I-BJI 6.4

(IF)  
CABIV  
I-BJI 14.5  
RADAR

CELIS  
IDJ 8.1

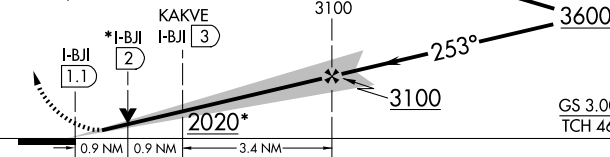
MSA IDJ 25 NM  
3600

NC-1, 14 MAY 2026 to 11 JUN 2026

NC-1, 14 MAY 2026 to 11 JUN 2026

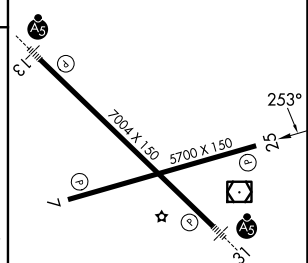
2300	3400	IDJ	CELIS
↑	hdg 185°	R-214	△

\*LOC only



CATEGORY	A	B	C	D
S-ILS 25		1589-¾	200 (200-¾)	
S-LOC 25		1720-1	331 (400-1)	
CIRCLING	1840-1 449 (500-1)	1860-1 469 (500-1)	1860-1½ 469 (500-1½)	1960-2 569 (600-2)

ELEV 1391 **D** TDZE 1389



HIRL Rwy 13-31  
MRL Rwy 7-25  
REIL Rws 7 and 25