

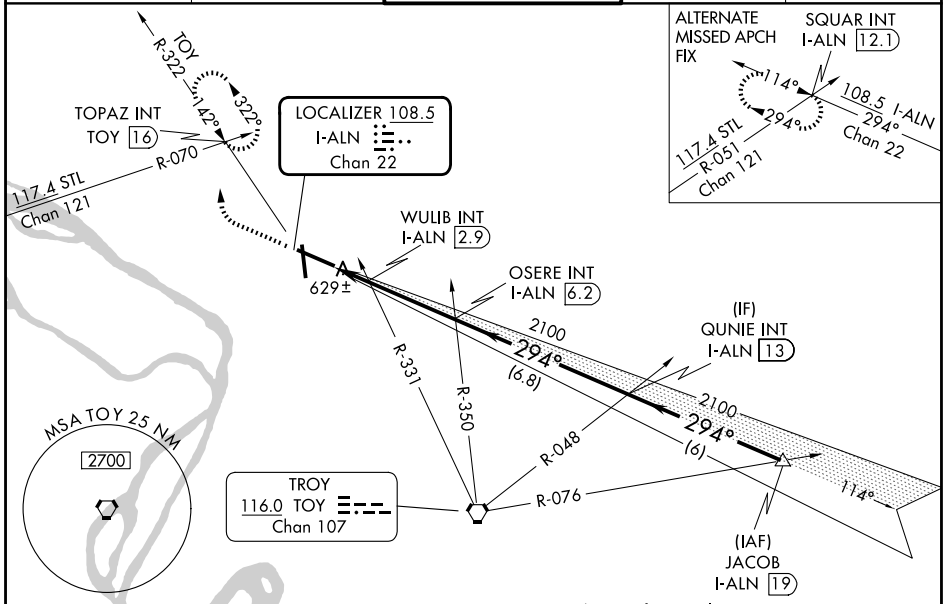
LOC/DME I-ALN <b>108.5</b> Chan 22	APP CRS <b>294°</b>	Rwy Ldg TDZE Apt Elev	<b>8099</b> <b>531</b> <b>544</b>
--	------------------------	-----------------------------	---

# ILS or LOC RWY 29

ST LOUIS RGNL (ALN)

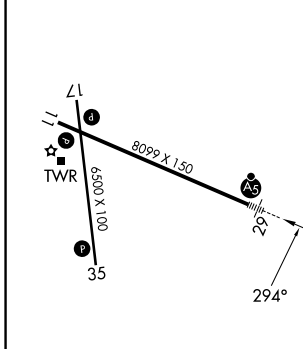
<p>For inop ALS, increase WULIB fix minimums S-LOC 29 Cats C/D visibility to 1 SM.</p>	<p>MALS R</p>	<p>MISSED APPROACH: Climb to 1000 then climbing right turn to 2200 on heading 310° and on TOY VORTAC R-322 to TOPAZ INT/TOY 16 DME and hold.</p>

ATIS <b>128.0</b>	ST LOUIS APP CON <b>124.2 353.9</b>	REGIONAL TOWER* <b>126.0 (CTAF) 239.0</b>	GND CON <b>120.2</b>	UNICOM <b>122.95</b>
----------------------	--	--	-------------------------	-------------------------



ELEV 544	<b>D</b>	TDZE 531
----------	----------	----------

Procedure NA for arrivals at JACOB on V12 northeast bound.



CATEGORY	*LOC only.			
	A	B	C	D
S-ILS 29	731-1/2 200 (200-1/2)			
S-LOC 29	980-1/2	449 (500-1/2)	980-7/8	449 (500-7/8)
CIRCLING	1000-1	456 (500-1)	1160-13/4 616 (700-13/4)	1200-2 656 (700-2)
WULIB FIX MINIMUMS (DUAL VOR RECEIVERS OR DME REQUIRED)				
S-LOC 29	880-1/2	349 (400-1/2)	880-5/8	349 (400-5/8)
CIRCLING	1000-1	456 (500-1)	1160-13/4 616 (700-13/4)	1200-2 656 (700-2)

REIL Rwy 11

HIRL Rwy 11-29

MIRL Rwy 17-35

FAF to MAP 4.8 NM

Knots	60	90	120	150	180
Min:Sec	4:48	3:12	2:24	1:55	1:36

EC-3, 14 MAY 2026 to 11 JUN 2026

EC-3, 14 MAY 2026 to 11 JUN 2026