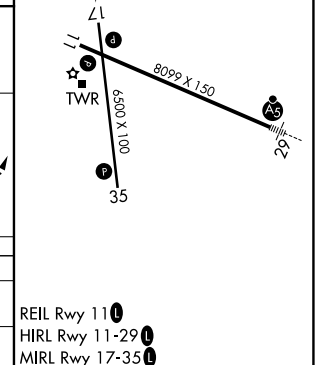
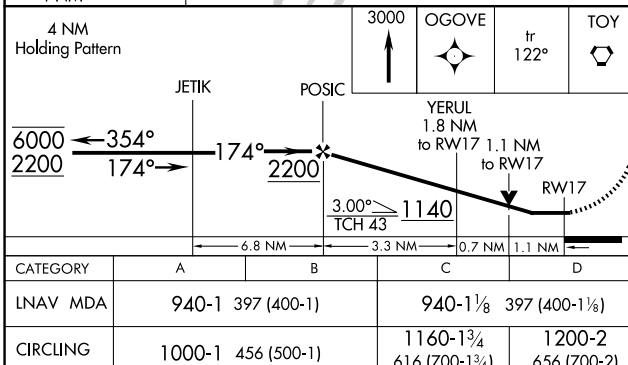
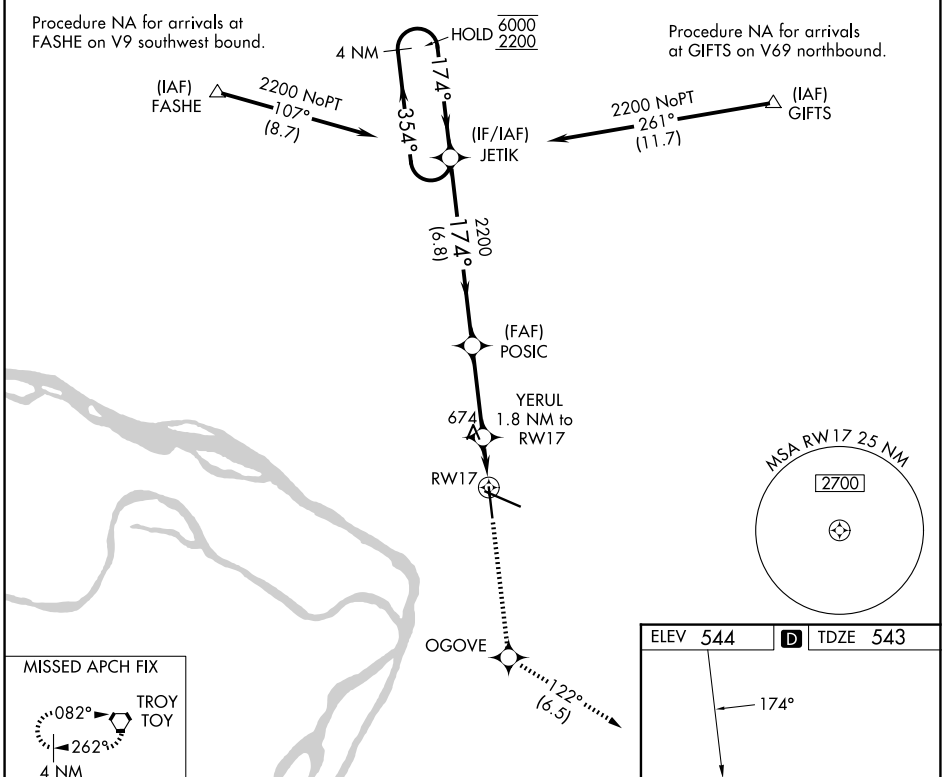


APP CRS	Rwy Ldg	6500
174°	TDZE	543
	Apt Elev	544

RNAV (GPS) RWY 17

ST LOUIS RGNL (ALN)

RNP APCH.		MISSED APPROACH: Climb to 3000 direct OGOVE and on track 122° to TOY VORTAC and hold.	
Rwy 17 helicopter visibility reduction below 3/4 SM NA.			
ATIS 128.0	ST LOUIS APP CON 124.2 353.9	REGIONAL TOWER* 126.0 (CTAF) 239.0	GND CON 120.2
		UNICOM 122.95	



EC-3, 14 MAY 2026 to 11 JUN 2026

EC-3, 14 MAY 2026 to 11 JUN 2026