

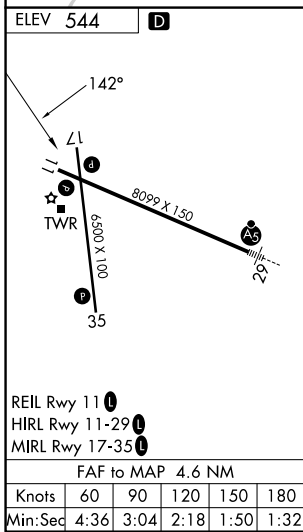
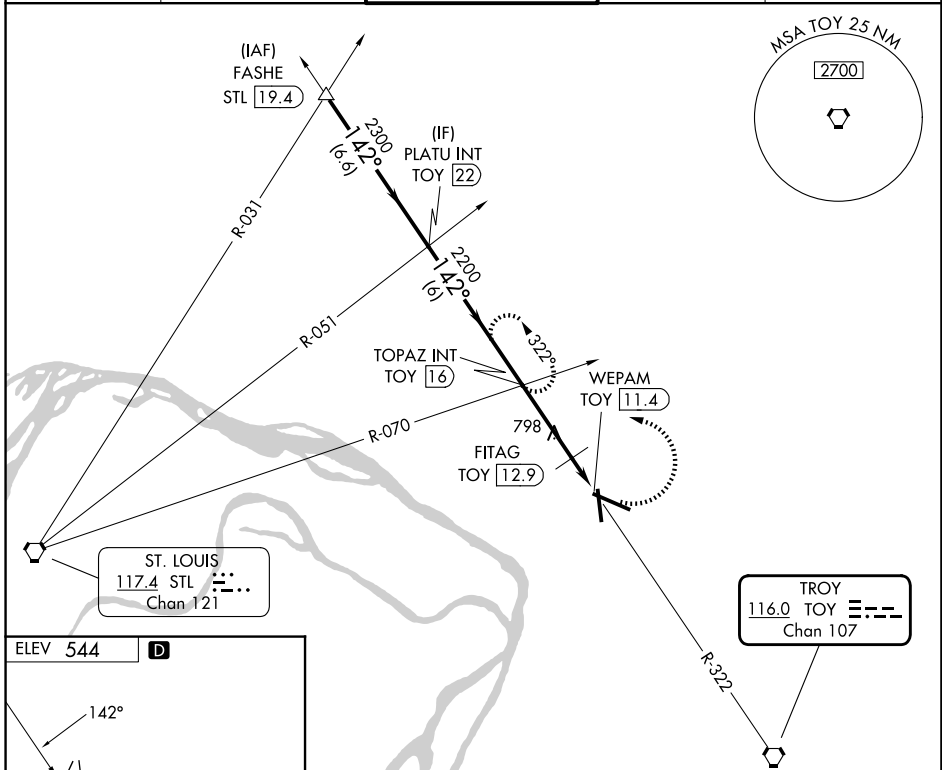
VORTAC TOY 116.0 Chan 107	APP CRS 142°	Rwy Ldg TDZE Apt Elev	N/A N/A 544
-----------------------------------------------	------------------------	-----------------------------	----------------------------------------

VOR-A
ST LOUIS RGNL (A.L.N)

⚠ When local altimeter setting not received, use St Louis Lambert Intl altimeter setting and increase all MDA 60 feet and increase Circling Cat C/D visibility ¼ SM. When VGSI inop, Circling to Rwy 17/35 NA at night.

MISSED APPROACH: Climbing left turn to 2200 via TOY R-322 to TOPAZ INT/TOY 16 DME and hold.

ATIS 128.0	ST LOUIS APP CON 124.2 353.9	REGIONAL TOWER* 126.0 (CTAF) 239.0	GND CON 120.2	UNICOM 122.95
----------------------	----------------------------------------	-----------------------------------------------------	-------------------------	-------------------------



	FASHE STL 19.4 2700	*1160 when using St Louis Lambert Intl altimeter setting.	2200 TOY R-322	TOPAZ INT
		PLATU INT TOY 22	FITAG TOY 12.9	WEPAM TOY 11.4
Procedure Turn	NA	2300	2200	*1100
	6.6 NM	6 NM	3.2 NM	1.4 NM
CATEGORY	A	B	C	D
CIRCLING	1100-1	556 (600-1)	1160-1¾ 616 (700-1¾)	1200-2 656 (700-2)
	FITAG FIX MINIMUMS			
CIRCLING	1000-1	456 (500-1)	1160-1¾ 616 (700-1¾)	1200-2 656 (700-2)

EC-3, 14 MAY 2026 to 11 JUN 2026

EC-3, 14 MAY 2026 to 11 JUN 2026