

WAAS CH <b>61125</b> W11A	APP CRS <b>114°</b>	Rwy Ldg TDZE Apt Elev	<b>4460</b> <b>96</b> <b>103</b>
---------------------------------	------------------------	-----------------------------	--

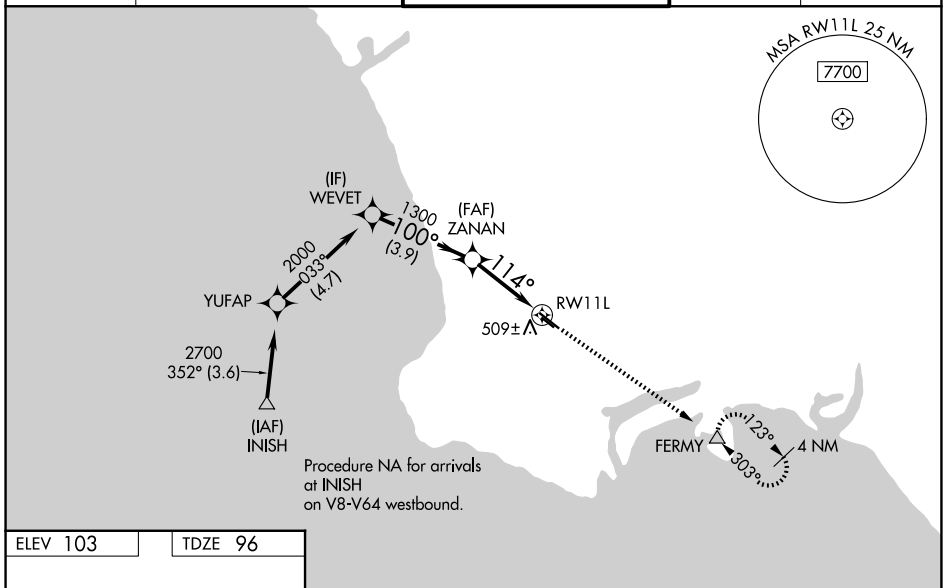
# RNAV (GPS) RWY 11L

ZAMPERINI FLD (TOA)

**⚠** For uncompensated Baro-VNAV systems, LNAV/VNAV NA below 3°C (38°F) or above 54°C (130°F). Circling NA southwest of Rwy 11R-29L. Baro-VNAV and VDP NA when using Los Angeles Intl altimeter setting. DME/DME RNP-0.3 NA. When local altimeter setting not received, except for operators with approved weather reporting service, use Los Angeles Intl altimeter setting: increase LPV DA to 390 feet and LNAV/VNAV DA to 714 feet and all MDA 40 feet; increase LNAV/VNAV all Cats visibility, LNAV Cat C visibility and Circling Cat C visibility 1/8 SM. Rwy 11L helicopter visibility reduction below 3/4 SM NA.

**MISSED APPROACH:** Climb to 2700 direct FERMV and hold, continue climb-in-hold to 2700.

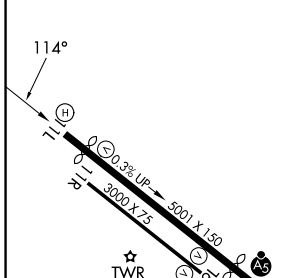
ATIS <b>125.6</b>	SOCAL APP CON <b>124.3 363.2</b> (11L, 11R) <b>127.2 269.6</b> (29L, 29R)	<b>TORRANCE TOWER*</b> <b>133.075 257.8</b> (N) <b>124.0</b> (CTAF) <b>0 257.8</b> (S)	GND CON <b>120.9</b>	UNICOM <b>122.95</b>
----------------------	---	--	-------------------------	-------------------------



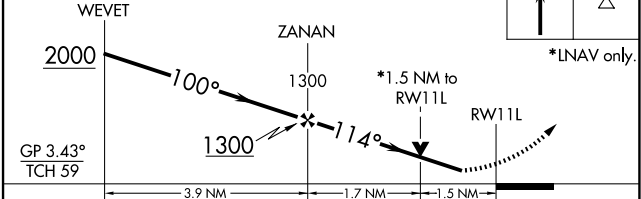
SW-3, 14 MAY 2026 to 11 JUN 2026

SW-3, 14 MAY 2026 to 11 JUN 2026

ELEV 103	TDZE 96
----------	---------



VGSI and RNAV glidepath not coincident (VGSI Angle 3.50/TCH 10).



CATEGORY	A	B	C	D
LPV DA	366-7/8 270 (300-7/8)			NA
LNAV/VNAV DA	690-13/4 594 (600-13/4)			NA
LNAV MDA	640-1	544 (600-1)	640-15/8 544 (600-15/8)	NA
CIRCLING	640-1 537 (600-1)	680-1 577 (600-1)	680-15/8 577 (600-15/8)	NA

REIL Rwy 29L  
MIRL Rwys 11L-29R and 11R-29L