

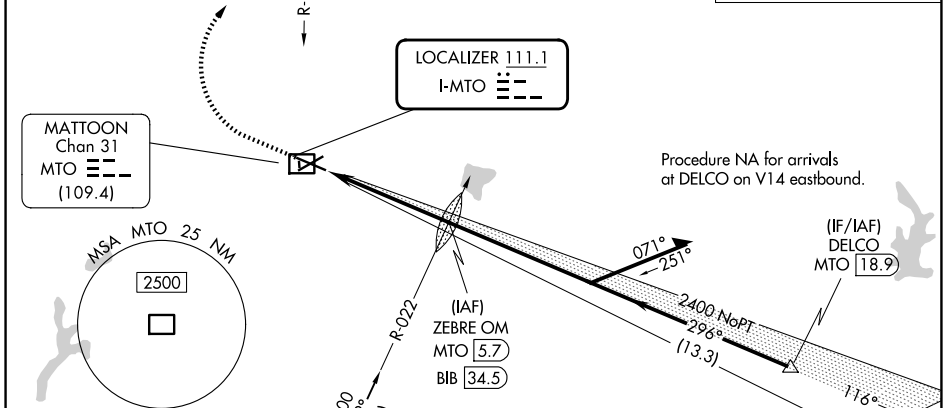
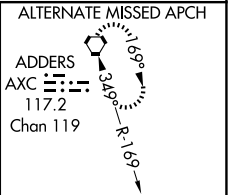
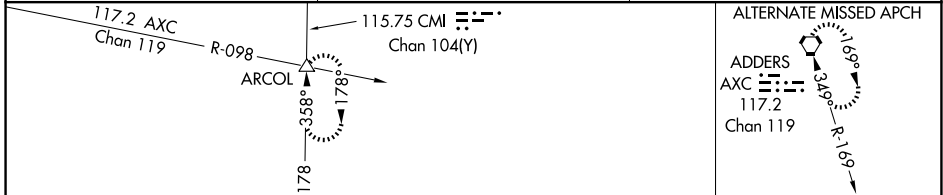
LOC I-MTO <b>111.1</b>	APP CRS <b>296°</b>	Rwy Ldg TDZE Apt Elev	<b>6501</b> <b>718</b> <b>722</b>
---------------------------	------------------------	-----------------------------	---

# ILS or LOC RWY 29

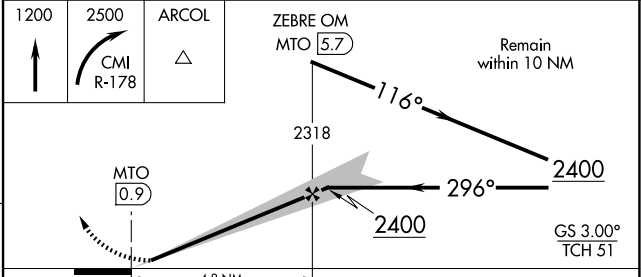
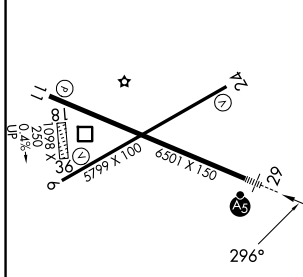
COLES COUNTY MEML (MTO)

DME required for procedure entry from BIB VORTAC.		MALSR 	MISSED APPROACH: Climb to 1200 then climbing right turn to 2500 on CMI R-178 to ARCOL INT and hold.
DME from MTO DME. Simultaneous reception of I-MTO and MTO DME required. Circling NA to Rwy 18 and 36.	NA		

ASOS <b>118.475</b>	CHAMPAIGN APP CON★ <b>132.85 290.225</b>	UNICOM <b>122.7 (CTAF)</b>
------------------------	---	-------------------------------



ELEV 722	<b>D</b>	TDZE 718
----------	----------	----------



MIRL Rwy 6-24  
 HIRL Rwy 11-29  
 REIL Rwys 6, 11, and 24

FAF to MAP 4.8 NM

Knots	60	90	120	150	180
Min:Sec	4:48	3:12	2:24	1:55	1:36

CATEGORY	A	B	C	D
S-ILS 29		918-1/2	200 (200-1/2)	
S-LOC 29	1160-1/2	442 (500-1/2)	1160-7/8	442 (500-7/8)
CIRCLING	1160-1 438 (500-1)	1180-1 458 (500-1)	1240-1 1/2 518 (600-1 1/2)	1380-2 658 (700-2)

EC-3, 14 MAY 2026 to 11 JUN 2026

EC-3, 14 MAY 2026 to 11 JUN 2026