

WAAS CH 93510 W29A	APP CRS 296°	Rwy Ldg TDZE Apt Elev	6501 718 722
--	------------------------	-----------------------------	---

RNAV (GPS) RWY 29

COLES COUNTY MEML (MTO)

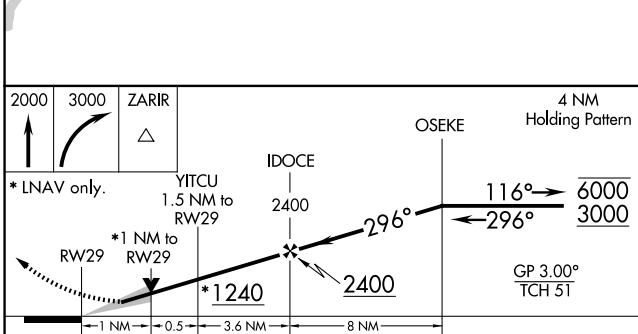
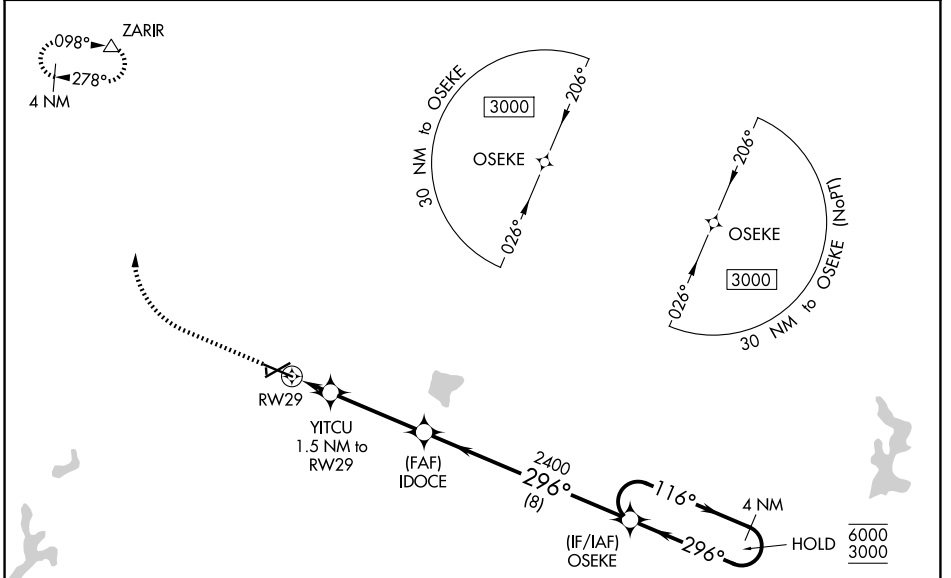
RNP APCH.

MALS R

MISSED APPROACH: Climb to 2000 then climbing right turn to 3000 direct ZARIR and hold.

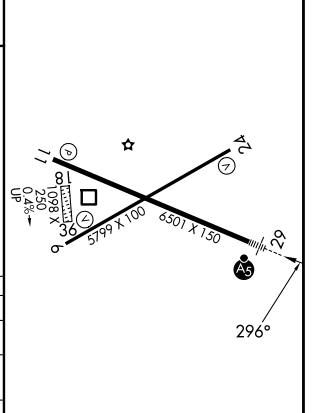
⚠ Circling NA to Rwy 18 and 36. For uncompensated Baro-VNAV systems, LNAV/VNAV NA below -19°C or above 54°C. For inop ALS, increase LNAV/VNAV all Cats visibility to 7/8 SM and increase LNAV Cat C/D visibility to 1 SM.

ASOS 118.475	CHAMPAIGN APP CON ★ 132.85 290.225	UNICOM 122.7 (CTAF) ①
------------------------	--	---------------------------------



ELEV 722	D	TDZE 718
----------	----------	----------

CATEGORY	A	B	C	D
LPV DA		918-1/2	200 (200-1/2)	
LNAV/VNAV DA		1014-1/2	296 (300-1/2)	
LNAV MDA	1080-1/2 362 (400-1/2)		1080-5/8 362 (400-5/8)	
CIRCLING	1160-1 438 (500-1)	1180-1 458 (500-1)	1240-1 1/2 518 (600-1 1/2)	1380-2 658 (700-2)



MIRL Rwy 6-24 ①
HIRL Rwy 11-29 ①
REIL Rws 6, 11, and 24 ①

EC-3, 14 MAY 2026 to 11 JUN 2026

EC-3, 14 MAY 2026 to 11 JUN 2026