



LOC I-BRD <b>109.9</b>	APP CRS <b>231°</b>	Rwy Ldg TDZE Apt Elev	<b>6512</b> <b>1224</b> <b>1232</b>
---------------------------	------------------------	-----------------------------	---

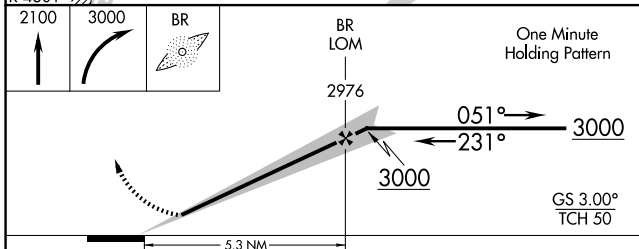
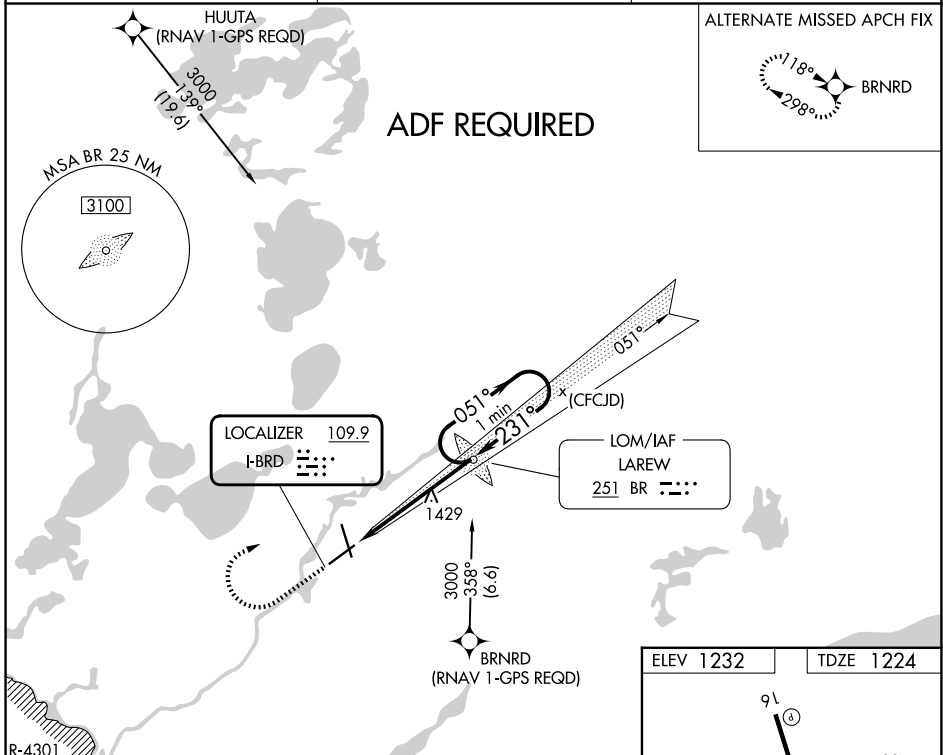
# ILS or LOC RWY 23

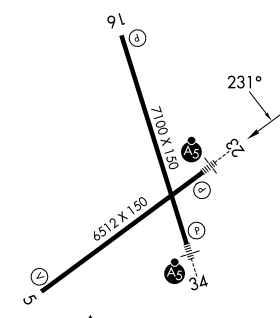


BRainerd LAKES RGnl (BRD)

**ADF required.** When local altimeter setting not received, use Aitkin altimeter setting and increase all DAs 52 feet and all MDAs 60 feet. Increase S-LOC Cat C visibility to 1 SM and Circling Cat D visibility to 2 1/4 SM.

**MALS**  MISSED APPROACH: Climb to 2100 then climbing right turn to 3000 direct LAREW LOM and hold.

ASOS <b>126.775</b>	MINNEAPOLIS CENTER <b>118.05 239.0</b>	UNICOM <b>122.7 (CTAF)</b> 
------------------------	---	---



ELEV 1232	TDZE 1224
	
HIRL Rwy 5-23 and 16-34  REIL Rwy 5 and 16 	
FAF to MAP 5.3 NM	
Knots	60 90 120 150 180
Min:Sec	5:18 3:32 2:39 2:07 1:46

CATEGORY	A	B	C	D
S-ILS 23	1424-1/2 200 (200-1/2)			
S-LOC 23	1680-1/2 456 (500-1/2)	1680-7/8 456 (500-7/8)	1680-1 456 (500-1)	
CIRCLING	1760-1 528 (600-1)	1760-1 1/2 528 (600-1 1/2)	1860-2 628 (700-2)	

NC-1, 14 MAY 2026 to 11 JUN 2026

NC-1, 14 MAY 2026 to 11 JUN 2026