

| | | | |
|--|------------------------|-----------------------------|---|
| WAAS CH 82018 W05A | APP CRS 050° | Rwy Ldg TDZE Apt Elev | 6512 1224 1232 |
|--|------------------------|-----------------------------|---|

RNAV (GPS) RWY 5

BRainerd LAKES RGNL (BRD)

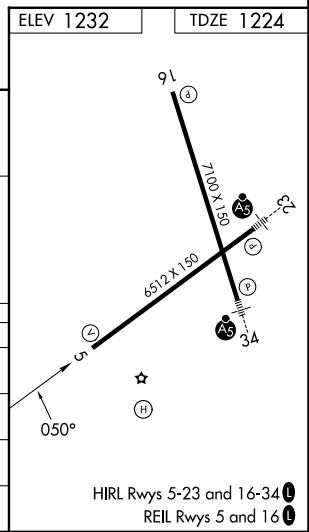
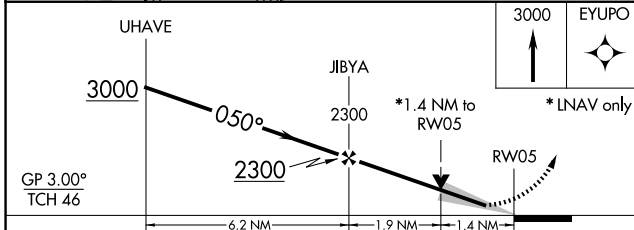
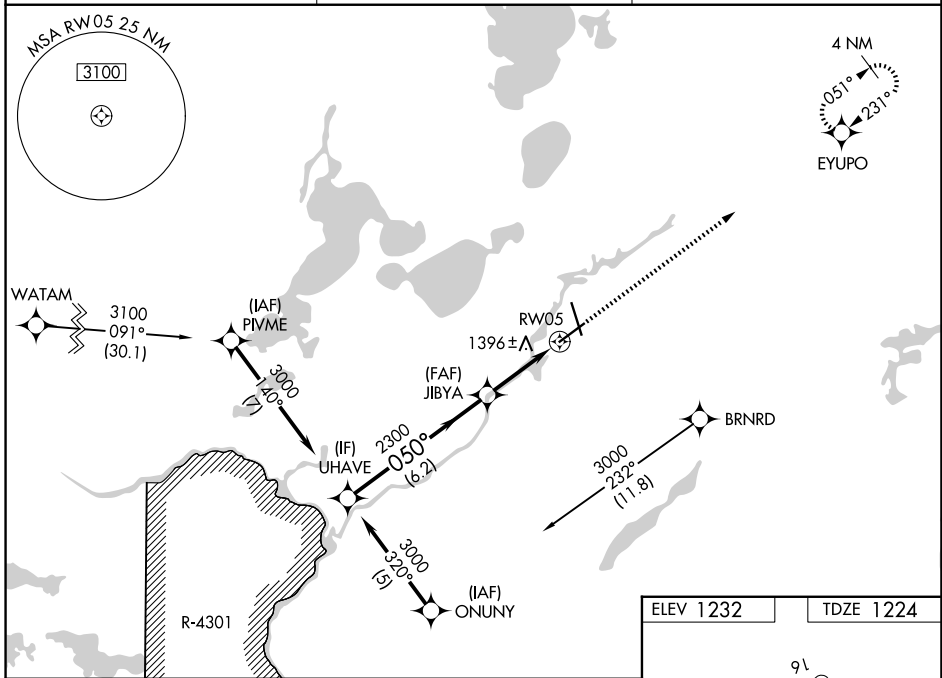
⚠ Baro-VNAV NA when using Aikiri altimeter setting. DME/DME RNP-0.3 NA. Procedure NA when R-4301 is active. For uncompensated Baro-VNAV systems, LNAV/VNAV NA below -17°C (2°F) or above 54°C (130°F). When local altimeter setting not received, use Aikiri altimeter setting and increase all DA 52 feet and all MDA 60 feet, increase LPV and LNAV/VNAV visibility ¼ mile all Cats, and LNAV Cats C and D visibility ¼ mile. VDP NA with Aikiri altimeter setting.

MISSED APPROACH: Climb to 3000 direct EYUPO and hold.

ASOS
126.775

MINNEAPOLIS CENTER
118.05 239.0

UNICOM
122.7(CTAF) 0



| CATEGORY | A | B | C | D |
|--------------|--------|-------------|-------------------------|-------------------------|
| LPV DA | 1424-¾ | | 200 (200-¾) | |
| LNAV/VNAV DA | 1777-2 | | 553 (600-2) | |
| LNAV MDA | 1700-1 | 476 (500-1) | 1700-1½ 476 (500-1½) | 1700-1½ 476 (500-1½) |
| CIRCLING | 1760-1 | 528 (600-1) | 1760-1½ 528 (600-1½) | 1860-2 628 (700-2) |

NC-1, 14 MAY 2026 to 11 JUN 2026

NC-1, 14 MAY 2026 to 11 JUN 2026