

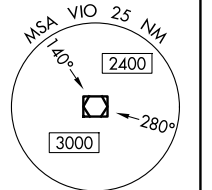
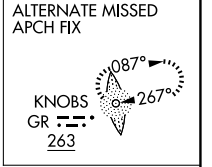
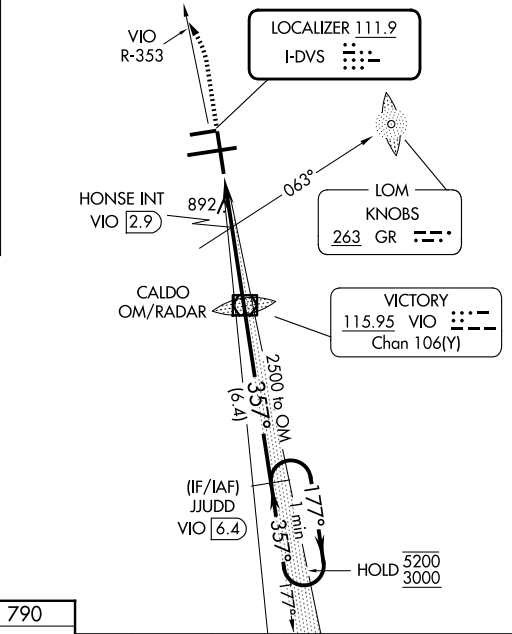
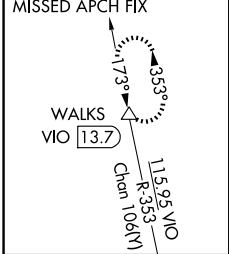
LOC I-DVS 111.9	APP CRS 357°	Rwy Ldg TDZE 8501 790 Apt Elev 794
---------------------------	------------------------	---

ILS or LOC RWY 35

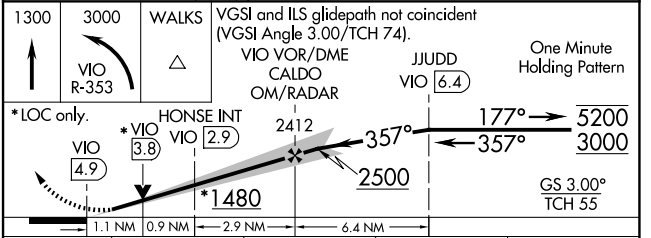
GERALD R FORD INTL (G.R.R.)

DME required. DME or RADAR required for procedure entry.		MALSR	MISSED APPROACH: Climb to 1300 then climbing left turn to 3000 on VIO VOR/DME R-353 to WALKS 13.7 DME and hold.
<p>HONSE fix minimums: for inop ALS, increase Cat C and D visibility to RVR 6000. ** RVR 1800 authorized with use of FD or AP or HUD to DA.</p>			

ATIS 118.725	GREAT LAKES APP CON* 128.4 257.6	GRAND RAPIDS TOWER* 135.65 (CTAF) 0 339.8	GND CON 121.8	UNICOM 122.95
------------------------	--	--	-------------------------	-------------------------



ELEV 794	D	TDZE 790			
MIRL Rwy 8L-26R	1				
REIL Rwys 8L, 17 and 26R	1				
HIRL Rwys 8R-26L and 17-35	1				
FAF to MAP 4.9 NM					
Knots	60	90	120	150	180
Min:Sec	4:54	3:16	2:27	1:58	1:38



CATEGORY	A	B	C	D
S-ILS 35**	990/24 200 (200-½)			
S-LOC 35	1480/24	690 (700-½)	1480-1½	690 (700-1½)
CIRCLING	1480-1	686 (700-1)	1480-2 686 (700-2)	1480-2¼ 686 (700-2¼)
HONSE MINIMUMS (ADF OR DME REQUIRED)				
S-LOC 35	1200/24	410 (500-½)	1200/40	410 (500-¾)
CIRCLING	1260-1	466 (500-1)	1340-1½ 546 (600-1½)	1360-2 566 (600-2)

EC-1, 14 MAY 2026 to 11 JUN 2026

EC-1, 14 MAY 2026 to 11 JUN 2026