

WAAS CH 93912 W17A	APP CRS 177°	Rwy Ldg 8501 TDZE 789 Apt Elev 794
--	------------------------	---

RNAV (GPS) RWY 17

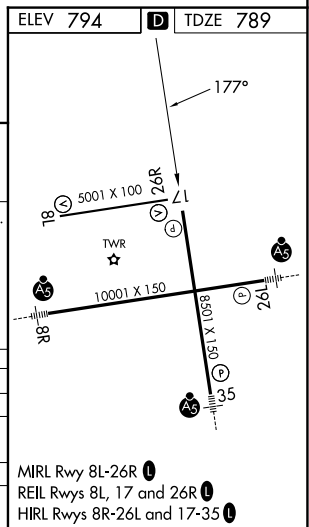
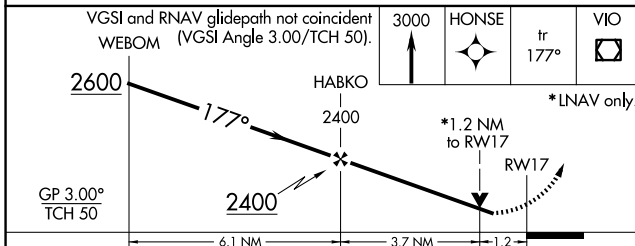
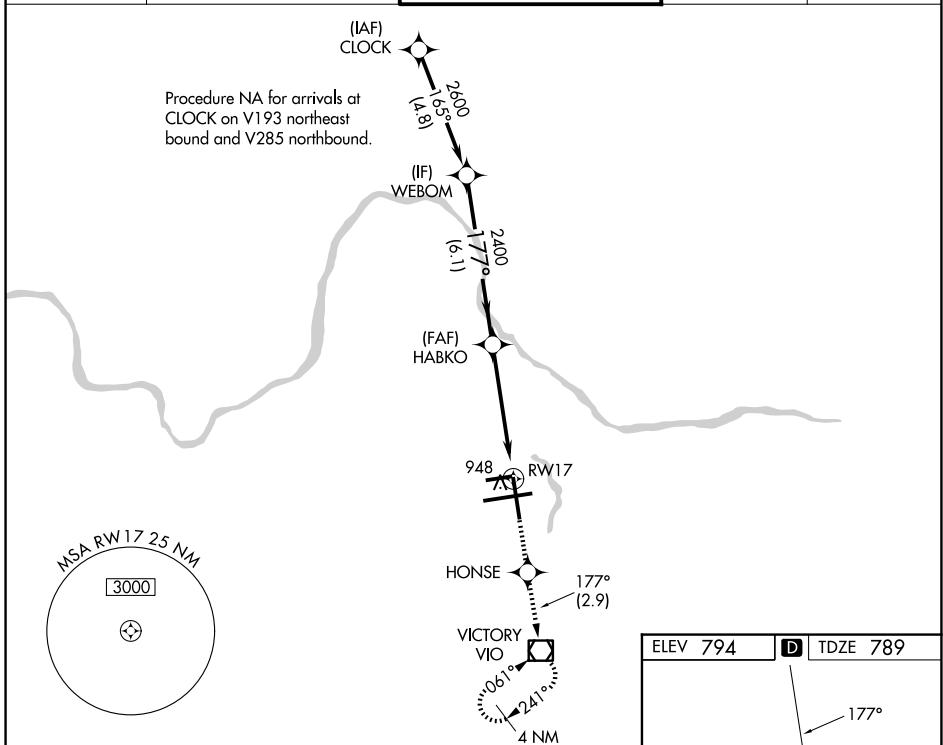
GERALD R FORD INTL (G.R.R.)

RNP APCH.

⚠ For uncompensated Baro-VNAV systems, LNAV/VNAV NA below -16°C or above 54°C. Rwy 17 helicopter visibility reduction below ¾ SM NA.

MISSED APPROACH: Climb to 3000 direct HONSE and on track 177° to VJO VOR/DME and hold, continue climb-in-hold to 3000.

ATIS 118.725	GREAT LAKES APP CON★ 128.4 257.6	GRAND RAPIDS TOWER★ 135.65 (CTAF) 339.8	GND CON 121.8	UNICOM 122.95
------------------------	--	---	-------------------------	-------------------------



CATEGORY	A	B	C	D
LPV DA		1108/50	319 (400-1)	
LNAV/VNAV DA		1259-1¾	470 (500-1¾)	
LNAV MDA	1200/55	411 (500-1)	1200-1¼	411 (500-1¼)
CIRCLING	1260-1	466 (500-1)	1340-1½	1360-2
			546 (600-1½)	566 (600-2)

EC-1, 14 MAY 2026 to 11 JUN 2026

EC-1, 14 MAY 2026 to 11 JUN 2026