

WAAS CH 86713 W26B	APP CRS 267°	Rwy Ldg 10001 TDZE 790 Apt Elev 794
--	------------------------	--

RNAV (GPS) RWY 26L

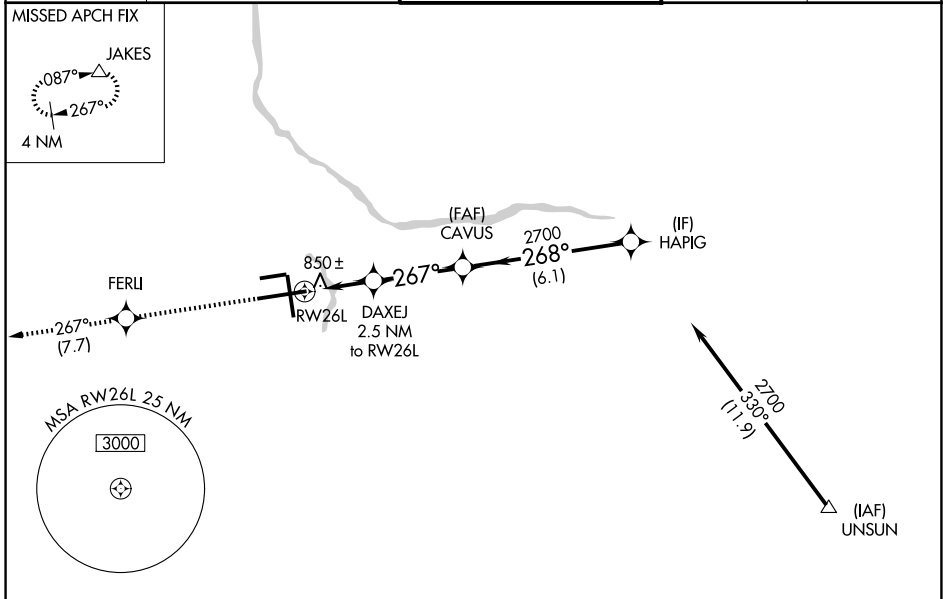
GERALD R FORD INTL (G.R.R)

▽ For uncompensated Baro-VNAV systems, LNAV/VNAV NA below -16°C (4°F) or above 54°C (130°F). DME/DME RNP-0.3 NA. For inoperative ALS, increase LNAV/VNAV Cat D visibility to RVR 5000.
** RVR 1800 authorized with use of FD or AP or HUD to DA.

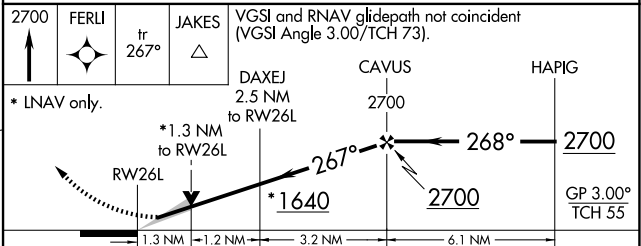
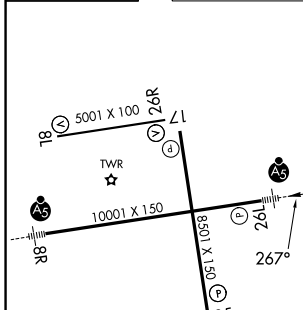
MALSR

MISSED APPROACH:
Climb to 2700 direct FERLI and track 267° to JAKES and hold.

ATIS 118.725	GREAT LAKES APP CON★ 128.4 257.6	GRAND RAPIDS TOWER★ 135.65 (CTAF) 0 339.8	GND CON 121.8	UNICOM 122.95
------------------------	--	--	-------------------------	-------------------------



ELEV 794	D	TDZE 790
-----------------	----------	-----------------



CATEGORY	A	B	C	D
LPV DA **	990/24 200 (200-1/2)			
LNAV/VNAV DA	1114/24 324 (400-1/2)			1114/40 324 (400-3/4)
LNAV MDA	1280/24	490 (500-1/2)	1280/40 490 (500-3/4)	1280/50 490 (500-1)
CIRCLING	1280-1	486 (500-1)	1340-1 1/2 546 (600-1 1/2)	1360-2 566 (600-2)

MIRL Rwy 8L-26L **Ⓛ**
REIL Rwy 8L, 17 and 26R **Ⓛ**
HIRL Rwy 8R-26L and 17-35 **Ⓛ**

EC-1, 14 MAY 2026 to 11 JUN 2026

EC-1, 14 MAY 2026 to 11 JUN 2026