

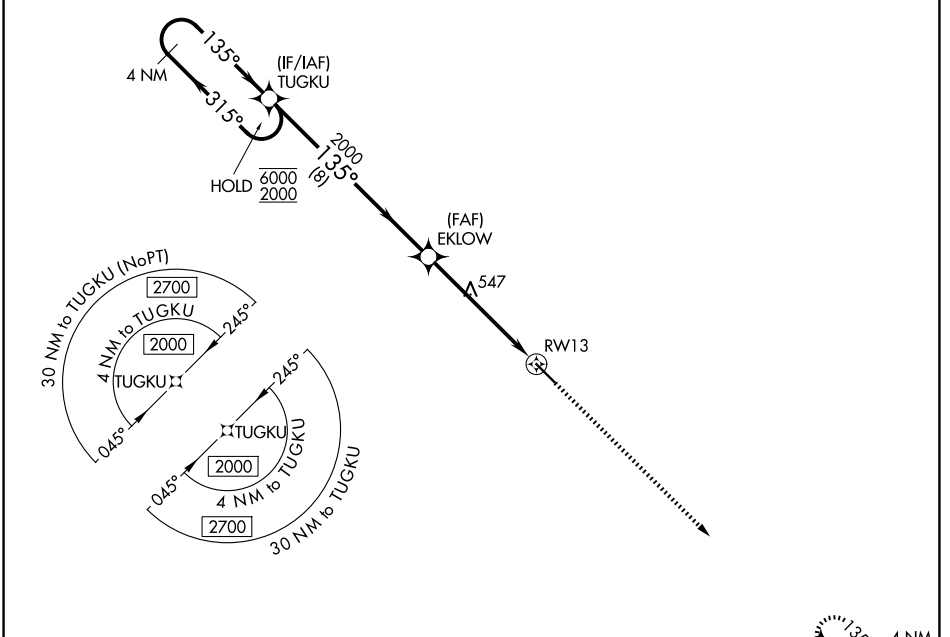
WAAS CH <b>45704</b> <b>W13A</b>	APP CRS <b>135°</b>	Rwy Ldg TDZE Apt Elev	<b>5513</b> <b>238</b> <b>238</b>
--	------------------------	-----------------------------	---

# RNAV (GPS) RWY 13

HESLER/NOBLE FLD (LUL)

RNP APCH - GPS.	MISSED APPROACH: Climb to 2000 direct IPAXE and hold.
<p>▼ For uncompensated Baro-VNAV systems, LNAV/VNAV</p> <p>▲ NA below -15°C or above 54°C.</p>	

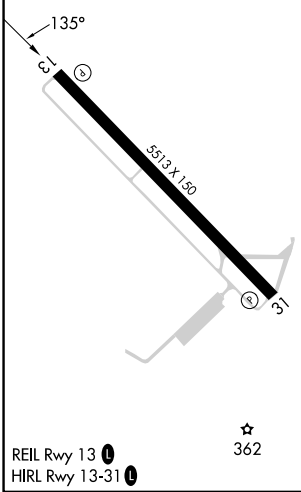
AWOS-3PT <b>119.275</b>	HOUSTON CENTER <b>126.8 327.8</b>	UNICOM <b>123.05 (CTAF) 0</b>
----------------------------	--------------------------------------	----------------------------------



SC-4, 14 MAY 2026 to 11 JUN 2026

SC-4, 14 MAY 2026 to 11 JUN 2026

ELEV 238	TDZE 238
----------	----------



4 NM Holding Pattern		TUGKU		EKLLOW		2000		IPAXE	
6000 ← 315°		135° →		2000		1.7 NM to RWY13		↑	
2000								IPAXE	
GP 3.00°									
TCH 40									
		8 NM		3.8 NM		1.7 NM			
CATEGORY	A	B	C	D					
LPV DA	488-1		250 (300-1)						
LNAV/VNAV DA	759-1¾		521 (600-1¾)						
LNAV MDA	800-1	562 (600-1)	800-1½	562 (600-1½)	800-2	562 (600-2)			
CIRCLING	800-1	562 (600-1)	1040-2¼	802 (900-2¼)	1060-2¾	822 (900-2¾)			