

LOC I-TIW <b>109.1</b>	APP CRS <b>167°</b>	Rwy Ldg <b>5002</b>
		TDZE <b>294</b>
		Apt Elev <b>295</b>

# ILS or LOC RWY 17

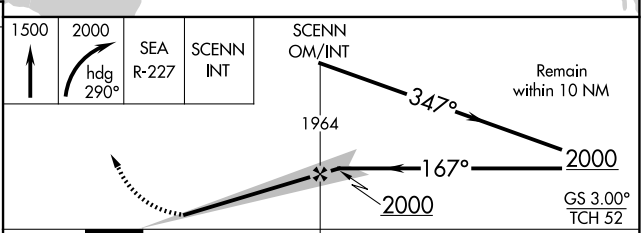
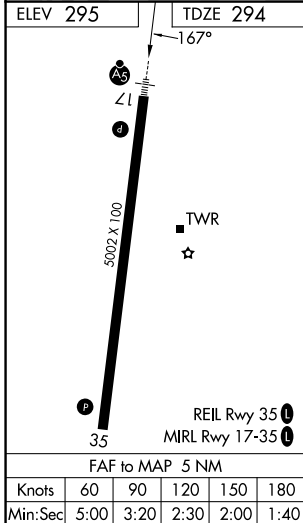
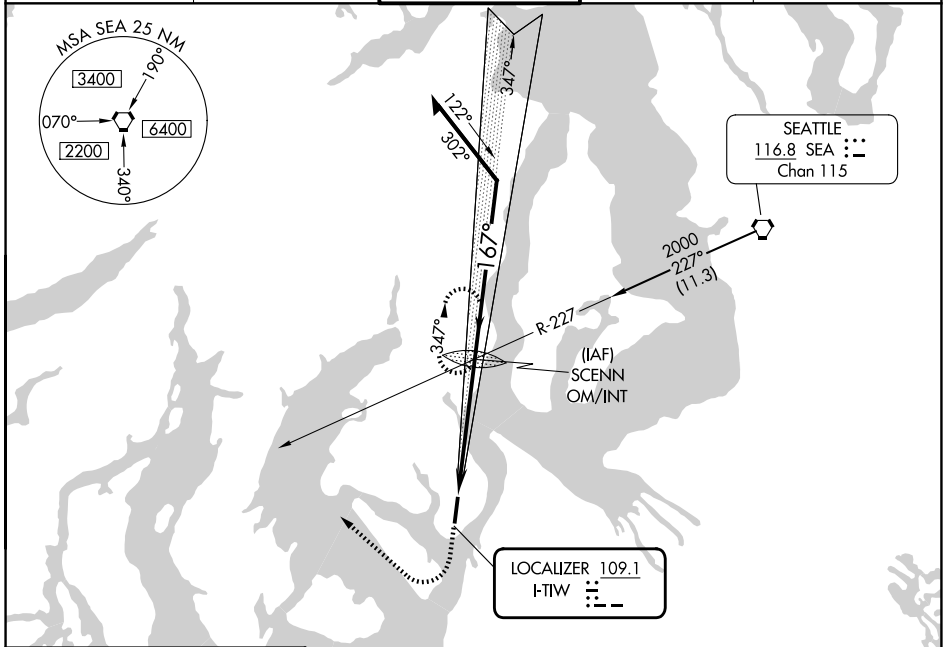
TACOMA NARROWS (TIW)

⚠ When control tower closed, obtain local altimeter setting on UNICOM, when not received, use McChord Fld altimeter setting minimums. Circling not authorized east of Rwy 17-35.

MALSRL

MISSED APPROACH: Climb to 1500, then climbing right turn to 2000 via heading 290° and SEA VORTAC R-227 to SCENN INT and hold.

ATIS <b>124.05</b>	SEATTLE APP CON <b>120.1 290.9</b>	TACOMA TOWER* <b>118.5 (CTAF) 0 253.5</b>	GND CON <b>121.8</b>	UNICOM <b>122.95</b>
-----------------------	---------------------------------------	--	-------------------------	-------------------------



CATEGORY	A	B	C	D
S-ILS 17	494-½ 200 (200-½)			
S-LOC 17	760-½	466 (500-½)	466 (500-¾)	760-1 466 (500-1)
CIRCLING	760-1	465 (500-1)	820-1½ 525 (600-1½)	860-2 565 (600-2)
MCCHORD FLD ALTIMETER SETTING MINIMUMS				
S-ILS 17	519-½ 225 (300-½)			
S-LOC 17	780-½	486 (500-½)	780-¾ 486 (500-¾)	780-1 486 (500-1)
CIRCLING	800-1	505 (600-1)	860-1½ 565 (600-1½)	900-2 605 (700-2)

NW-1, 14 MAY 2026 to 11 JUN 2026

NW-1, 14 MAY 2026 to 11 JUN 2026