

LOC/DME I-GFK 109.1 Chan 28	APP CRS 174°	Rwy Ldg 7351 TDZE 843 Apt Elev 845
---	------------------------	---

LOC BC RWY 17R

GRAND FORKS INTL (GFK)

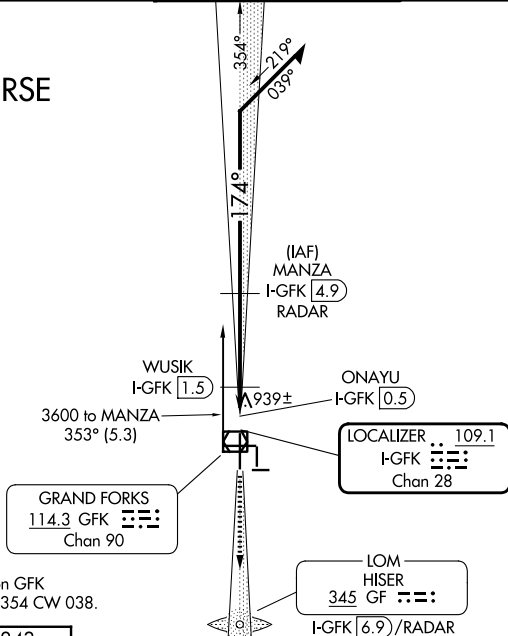
DME or ADF or RADAR required.

▼ When local altimeter setting not received, use Crookston altimeter setting and increase all MDA 80 feet; increase S-17R Cat C visibility 1/8 SM and Circling Cat C visibility 1/4 SM.
▲ Increase WUSIK fix minimums S-17R Cat C visibility and Circling Cat C visibility 1/4 SM.

MISSED APPROACH: Climb to 2600 on I-GFK south course (174°) to HISER LOM/I-GFK 6.9 DME/RADAR and hold.

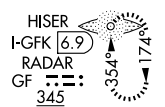
ATIS 119.4	GRAND FORKS APP CON * 118.1 318.1	GRAND FORKS TOWER * 118.4 (CTAF) 350.35	GND CON 124.575	UNICOM 122.95
----------------------	---	---	---------------------------	-------------------------

BACK COURSE

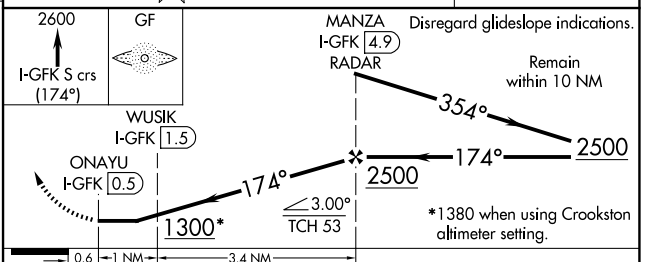
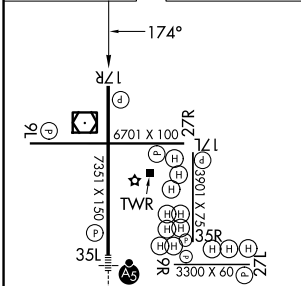


Procedure NA for arrival on GFK
VOR/DME airway radials 354 CW 038.

MISSED APCH FIX



ELEV 845	D	TDZE 843
-----------------	----------	-----------------



MIRL Rwy 9L-27R, 9R-27L and 17L-35R
HIRL Rwy 17R-35L
REIL Rwy 17R, 9L, and 27R

FAF to MAP 4.4 NM

Knots	60	90	120	150	180
Min:Sec	4:24	2:56	2:12	1:46	1:28

CATEGORY	A	B	C	D
S-17R	1300-1	457 (500-1)	1300-1 ³ / ₈ 457 (500-1 ³ / ₈)	1300-1 ¹ / ₂ 457 (500-1 ¹ / ₂)
CIRCLING	1300-1	455 (500-1)	1400-1 ¹ / ₂ 555 (600-1 ¹ / ₂)	1420-2 575 (600-2)
WUSIK FIX MINIMUMS				
S-17R	1200-1 357 (400-1)			1200-1 ¹ / ₄ 357 (400-1 ¹ / ₄)
CIRCLING	1260-1 415 (500-1)	1300-1 455 (500-1)	1400-1 ¹ / ₂ 555 (500-1 ¹ / ₂)	1420-2 575 (600-2)