

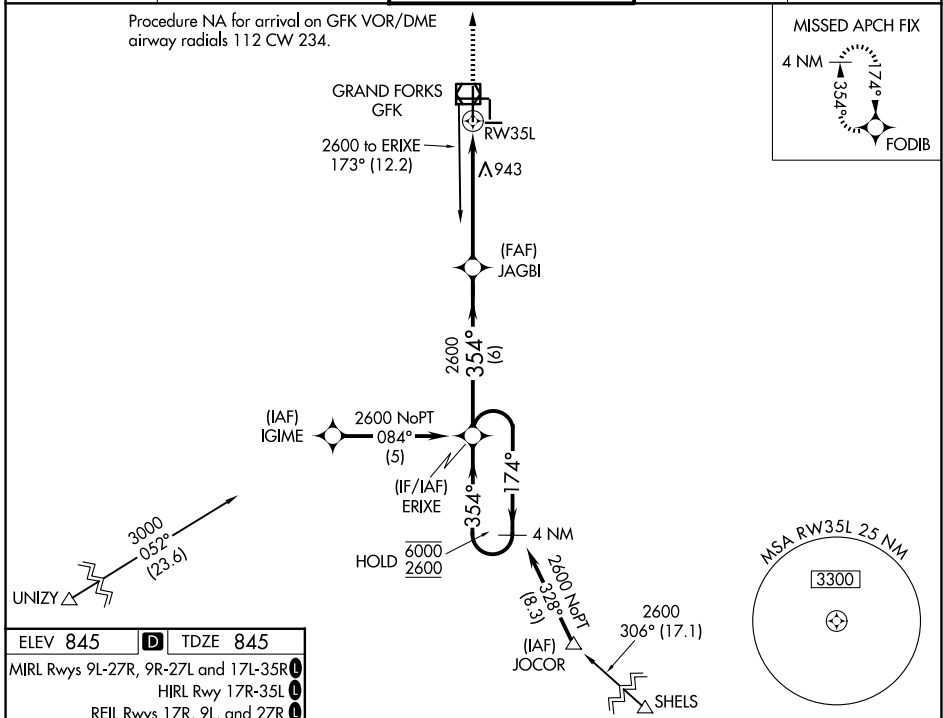
WAAS CH 70313 W35A	APP CRS 354°	Rwy Ldg TDZE Apt Elev	7351 845 845
--	------------------------	-----------------------------	---

RNAV (GPS) RWY 35L

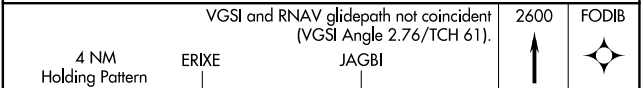
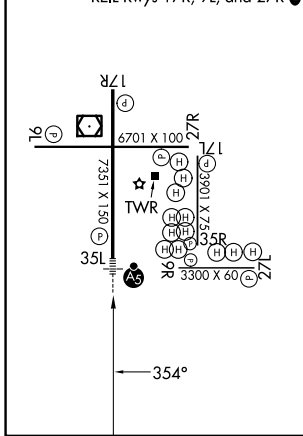
GRAND FORKS INTL (GFK)

RNP APCH. ▼ For uncompensated Baro-VNAV systems, LNAV/VNAV NA below -1.6°C or above 54°C. For Inop ALS, increase LNAV/VNAV Cat D visibility to RVR 5000 and LNAV Cat C/D visibility to RVR 5500.	MALSR 	MISSED APPROACH: Climb to 2600 direct FODIB and hold.
---	-----------	---

ATIS 119.4	GRAND FORKS APP CON * 118.1 318.1	GRAND FORKS TOWER * 118.4 (CTAF) 350.35	GND CON 124.575	UNICOM 122.95
----------------------	---	---	---------------------------	-------------------------



ELEV 845	D	TDZE 845
MIRL Rwy 9L-27R, 9R-27L and 17L-35R		
HIRL Rwy 17R-35L		
REIL Rwy 17R, 9L, and 27R		



6000	← 174°	→ 354°	→ 354°	→ 2600	→ 1 NM to RWY 35L
2600					
GP 3.00°					
TCH 55					
		6 NM	4.3 NM	1 NM	

CATEGORY	A	B	C	D
LPV DA	1095/24 250 (300-½)			
LNAV/VNAV DA	1174/26 329 (400-½)			1174/40 329 (400-¾)
LNAV MDA	1200/24	355 (400-½)	1200/30 355 (400-¾)	1200/50 355 (400-1)
CIRCLING	1280-1 435 (500-1)	1300-1 455 (500-1)	1400-1½ 555 (600-1½)	1420-2 575 (600-2)