

VOR/DME GFK	APP CRS	Rwy Ldg	<b>7351</b>
<b>114.3</b>	<b>183°</b>	TDZE	<b>843</b>
Chan <b>90</b>		Apt Elev	<b>845</b>

# VOR RWY 17R

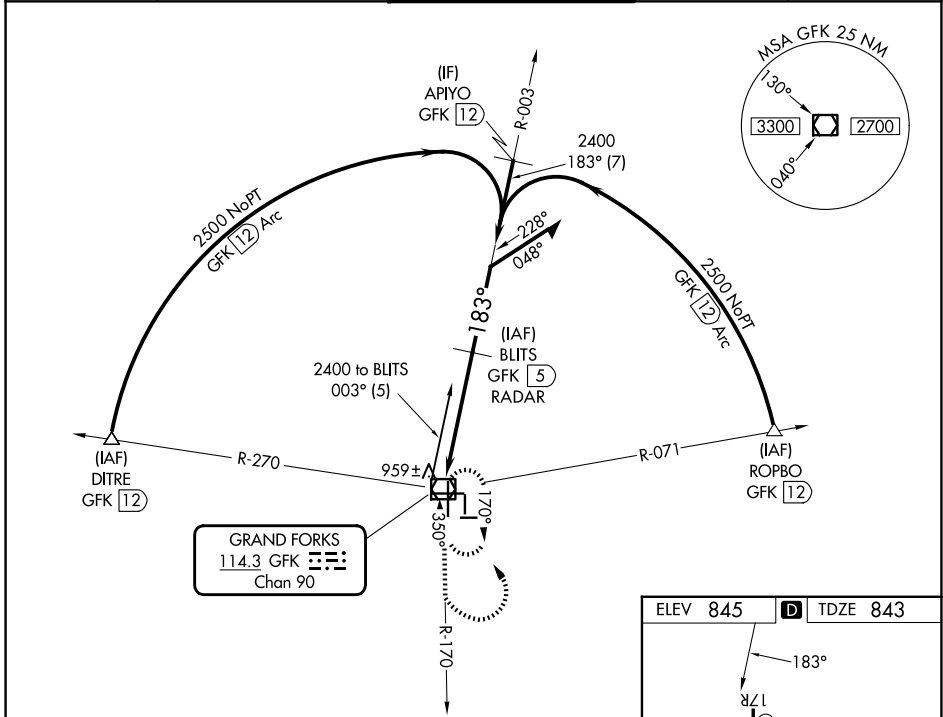
GRAND FORKS INTL (GFK)

DME or RADAR required.

▼ When local altimeter setting not received, use Crookston altimeter setting and increase all MDAs 80 feet; Increase Cat C/D visibility to 1 3/8 SM and Circling Cat C visibility 1/4 SM.  
 ▲ VDP NA with Crookston altimeter setting.

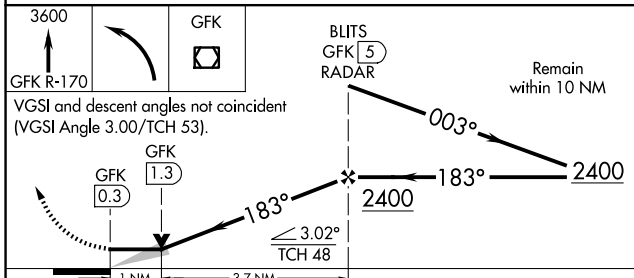
MISSED APPROACH: Climb to 3600 on GFK VOR/DME R-170 then left turn direct GFK VOR/DME and hold.

ATIS <b>119.4</b>	GRAND FORKS APP CON * <b>118.1 318.1</b>	GRAND FORKS TOWER * <b>118.4 (CTAF) 350.35</b>	GND CON <b>124.575</b>	UNICOM <b>122.95</b>
----------------------	---	---	---------------------------	-------------------------

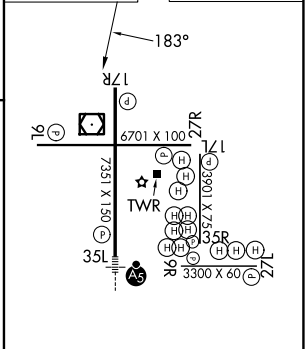


NC-1, 14 MAY 2026 to 11 JUN 2026

NC-1, 14 MAY 2026 to 11 JUN 2026



ELEV 845	D	TDZE 843
----------	---	----------



CATEGORY	A	B	C	D
S-17R	1220-1	377 (400-1)		1220-1 1/4 377 (400-1 1/4)
CIRCLING	1280-1 435 (500-1)	1300-1 455 (500-1)	1400-1 1/2 555 (600-1 1/2)	1420-2 575 (600-2)

MIRL Rwy 9L-27R, 9R-27L and 17L-35R	0
HIRL Rwy 17R-35L	0
REIL Rwy 17R, 9L, and 27R	0
FAF to MAP 4.7 NM	
Knots	60 90 120 150 180
Min:Sec	4:42 3:08 2:21 1:53 1:34