

WAAS CH 82512 W05A	APP CRS 054°	Rwy Ldg TDZE 439 Apt Elev 439	6051
--	------------------------	---	-------------

RNAV (GPS) RWY 5

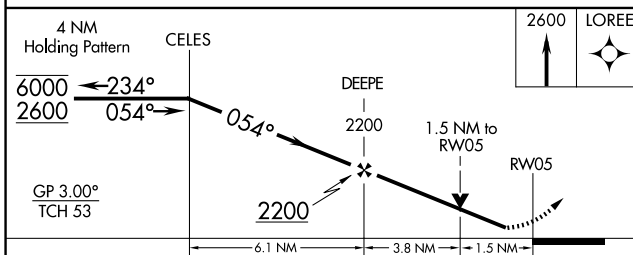
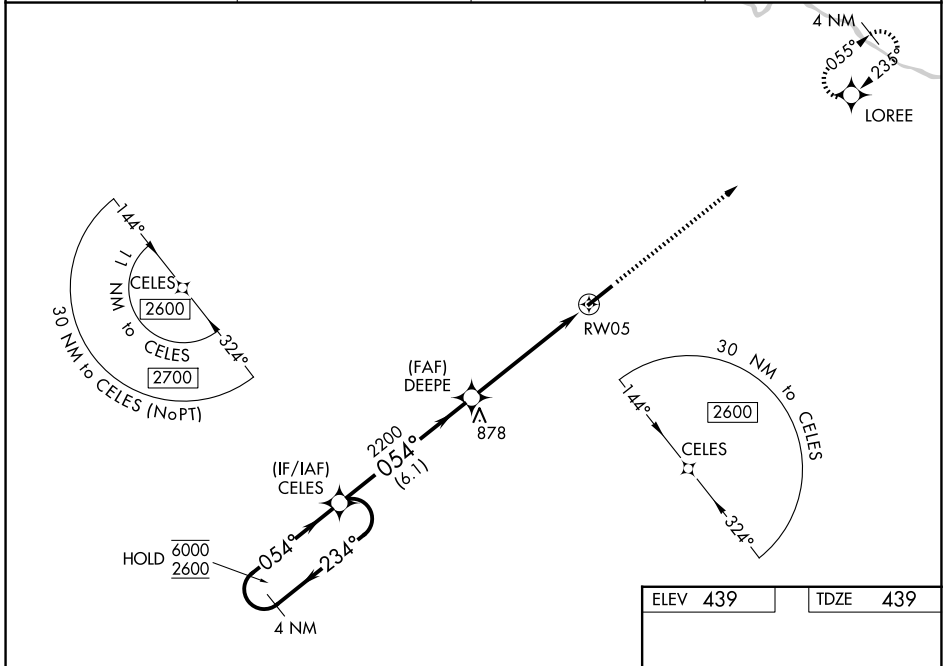
MADISONVILLE RGNL (2I0)

RNP APCH - GPS.

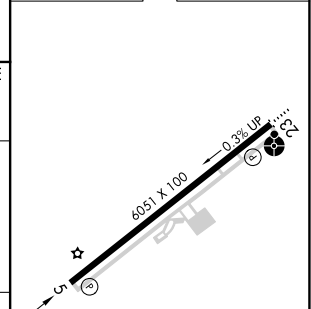
⚠ Baro-VNAV and VDP NA when using EVV altimeter setting. Rwy 5 helicopter visibility reduction below 3/4 SM NA. For uncompensated Baro-VNAV systems, LNAV/VNAV NA below -15°C or above 54°C. When local altimeter setting not received, use EVV altimeter setting and increase LPV DA to 788 feet and all visibilities 1/4 SM; increase LNAV/VNAV DA to 818 feet and all visibilities 1/8 SM; increase all MDAs 100 feet and LNAV visibility Cat C/D 1/4 SM, and Circling visibility Cat C 1/4 SM.

MISSED APPROACH:
Climb to 2600 direct LOREE and hold.

AWOS-3 126.475	EVANSVILLE APP CON* 124.025 290.9	CLNC DEL 120.1	UNICOM 122.7 (CTAF) 0
--------------------------	---	--------------------------	---------------------------------



ELEV 439	TDZE 439
----------	----------



CATEGORY	A	B	C	D
LPV DA		689-3/4	250 (300-3/4)	
LNAV/VNAV DA		719-7/8	280 (300-7/8)	
LNAV MDA	980-1	541 (600-1)	980-1 5/8	541 (600-1 1/8)
CIRCLING	980-1	541 (600-1)	980-1 1/8	1340-3 901 (1000-3)

HIRL Rwy 5-23 0
REIL Rwy 5 0

SE-1, 14 MAY 2026 to 11 JUN 2026

SE-1, 14 MAY 2026 to 11 JUN 2026