

LOC/DME I-GKY <b>111.55</b> Chan 52 (Y)	APP CRS <b>342°</b>	Rwy Ldg TDZE Apt Elev <b>6080</b> <b>620</b> <b>628</b>
---	------------------------	--

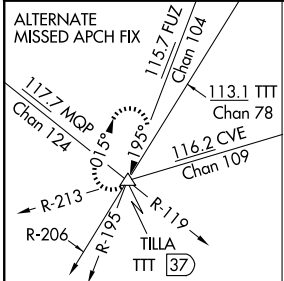
# ILS or LOC/DME RWY 34

ARLINGTON MUNI (GKY)

When local altimeter setting not received, use Grand Prairie Muni altimeter setting. Inop table does not apply to S-ILS 34.  
 For inop MALSRL increase S-LOC 34 Cat A, B visibility to 1 mile.

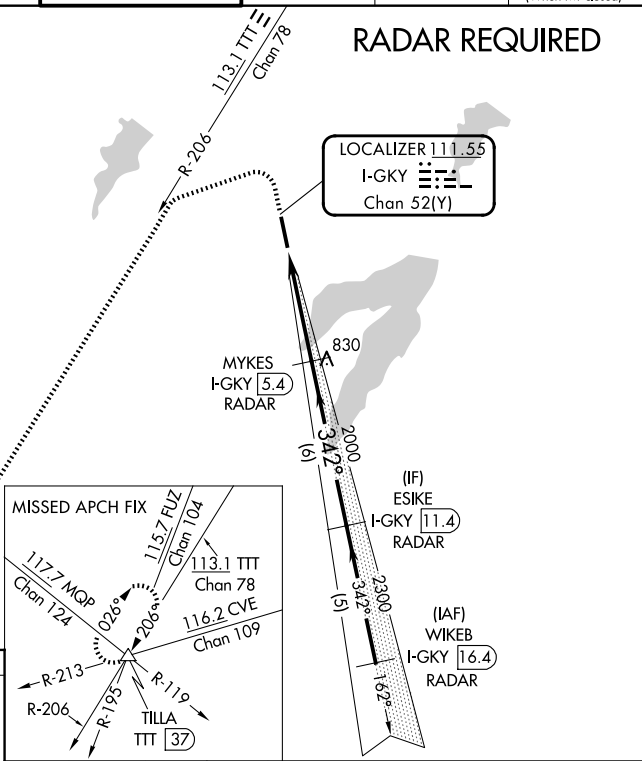
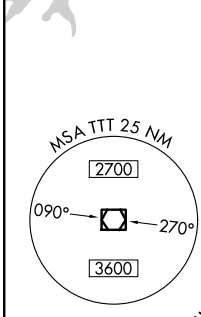
**MALSRL**  
 MISSED APPROACH: Climb to 1100 then climbing left turn to 3000 via heading 245° and TTT VOR/DME R-206 to TILLA INT/TTT 37 DME and hold.

ASOS <b>127.375</b>	LONE STAR APP CON <b>135.975 379.9</b>	ARLINGTON TOWER ★ <b>128.625 (CTAF)</b>	GND CON <b>121.875</b>	CLNC DEL <b>121.875</b>	CLNC DEL <b>118.85</b> (When twr closed)
------------------------	---	--	---------------------------	----------------------------	--

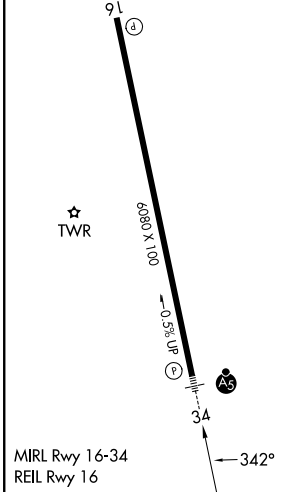
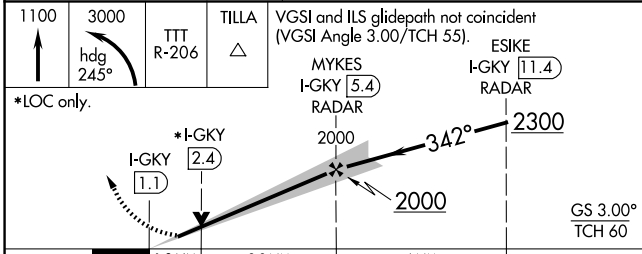
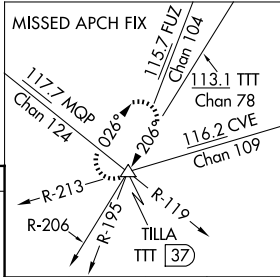


**RADAR REQUIRED**

LOCALIZER 111.55  
 I-GKY  
 Chan 52(Y)



ELEV 628	TDZE 620
----------	----------



CATEGORY	A	B	C	D
S-ILS 34		820-3/4	200 (200-3/4)	NA
S-LOC 34		1060-3/4	440 (500-3/4)	NA
CIRCLING	1100-1 472 (500-1)	1140-1 512 (600-1)	1220-1 1/2 592 (600-1 1/2)	NA

SC-2, 14 MAY 2026 to 11 JUN 2026

SC-2, 14 MAY 2026 to 11 JUN 2026